



Regular length band cut line

Longer length band cut line

Regular length hem cut line - HEM=2.5cm

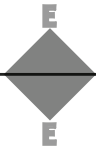
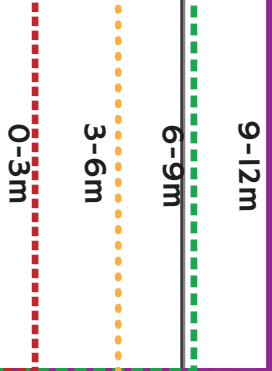
Longer length hem cut line - HEM=2.5cm



**SECOND STAR FABRIC**

SNUGGLY TOP SEWING PATTERN

**Short Sleeve Band**



0-300

6-9m

3-6m

0-3m

Loose  
Regular

SECOND STAR FABRIC  
SNUGGLY TOP SEWING PATTERN



4-5y

3-4y

2-3y

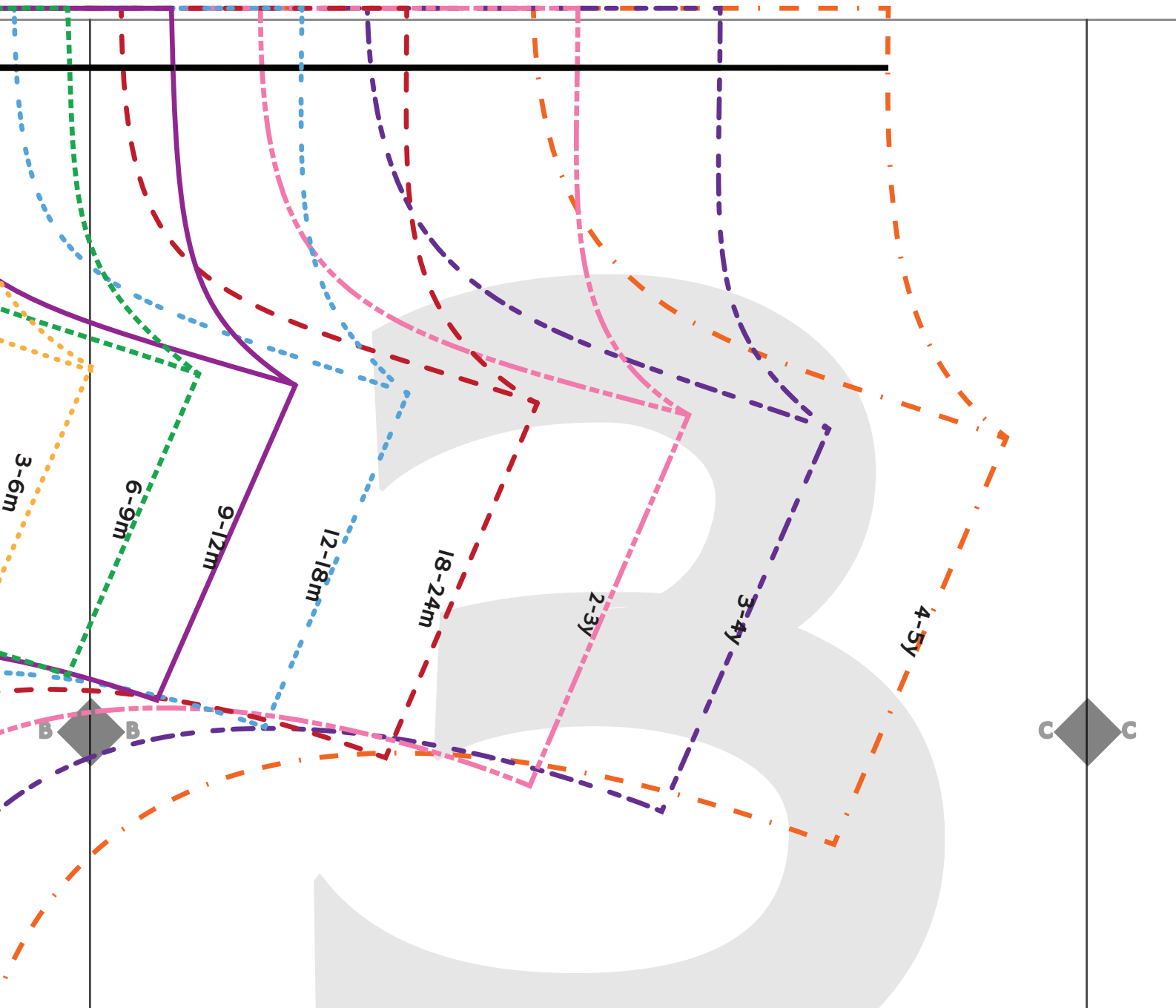
18-24m



12-18m

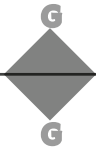
9-12m

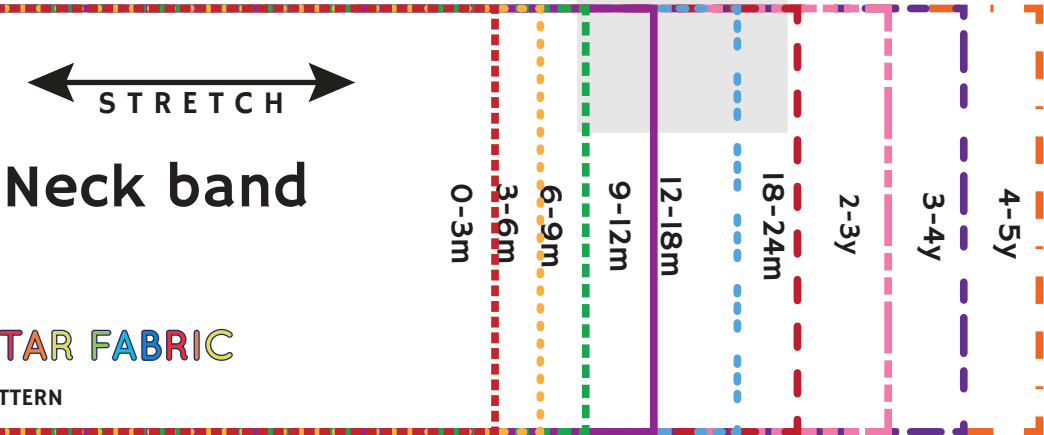
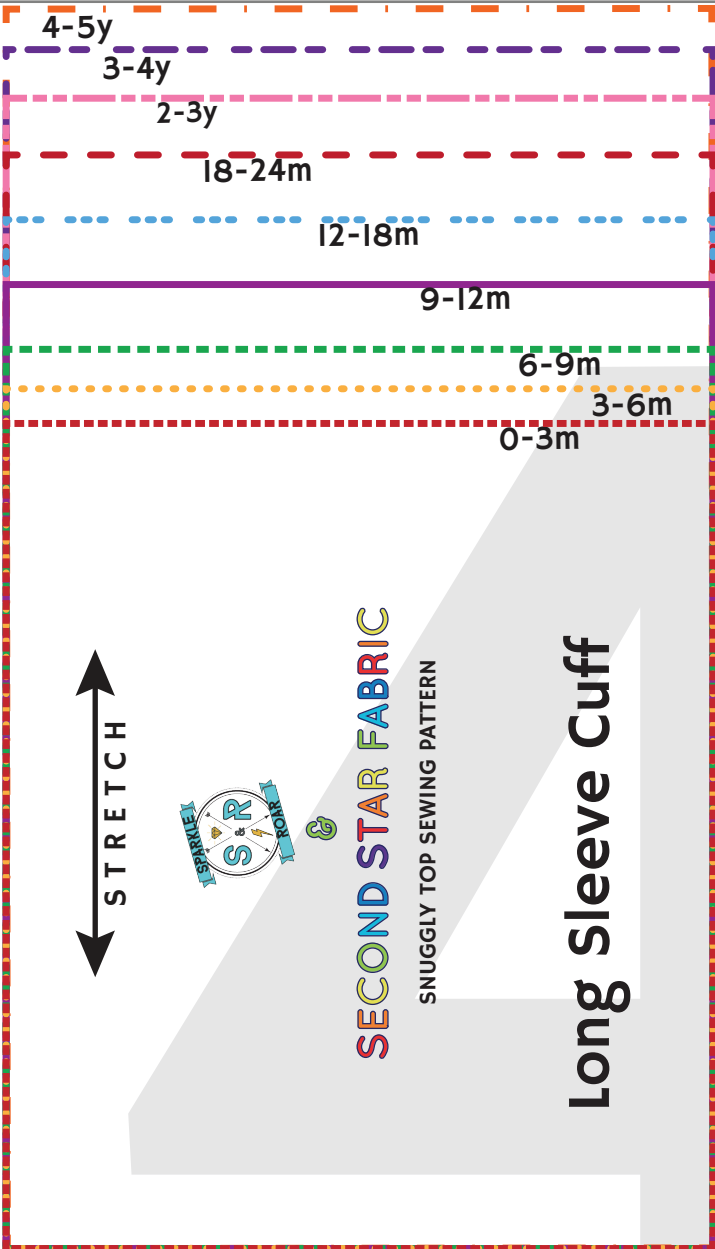
6-9m

3-6m

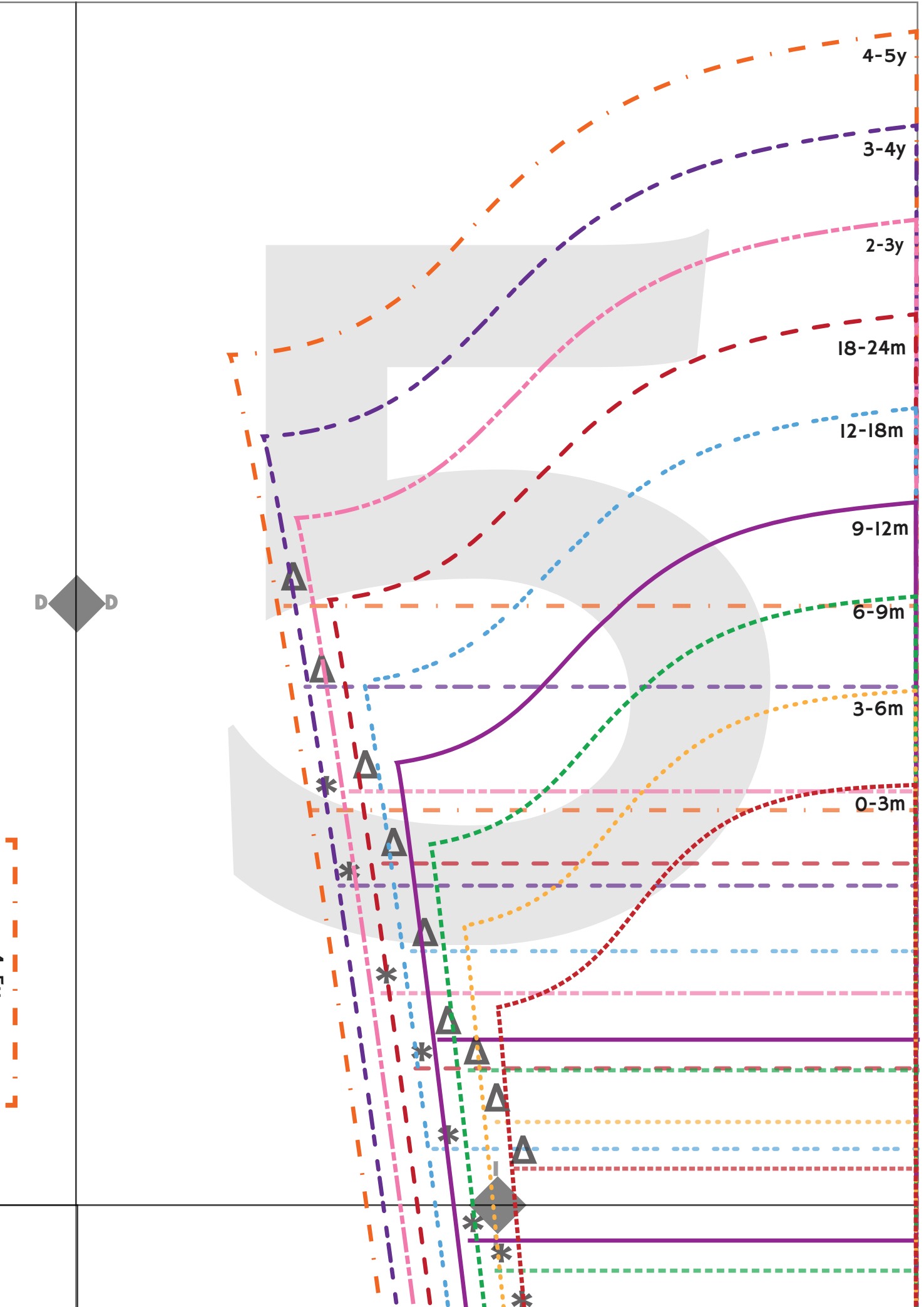


<b>Loose</b>	<b>Regular</b>	<p>Cut on the LOOSE line if you're making the loose fit or cut on the REGULAR line if you're making the regular fit. ADD 2.5cm to whichever line you're cutting on if using cotton lycra instead of rib.</p>	 
--------------	----------------	--	---





**SECOND STAR FABRIC**  
SNUGGLY TOP SEWING PATTERN



short sleeve band

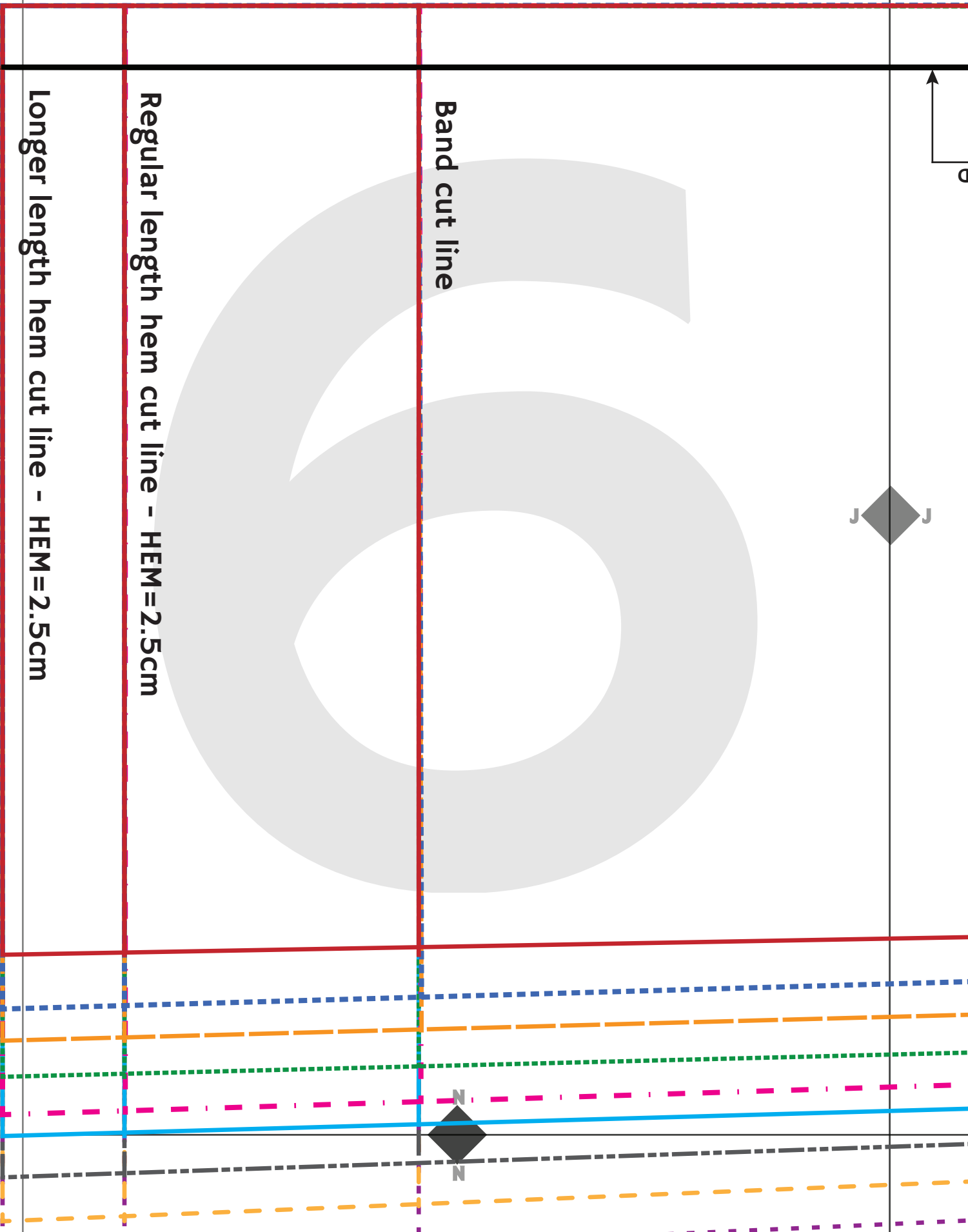
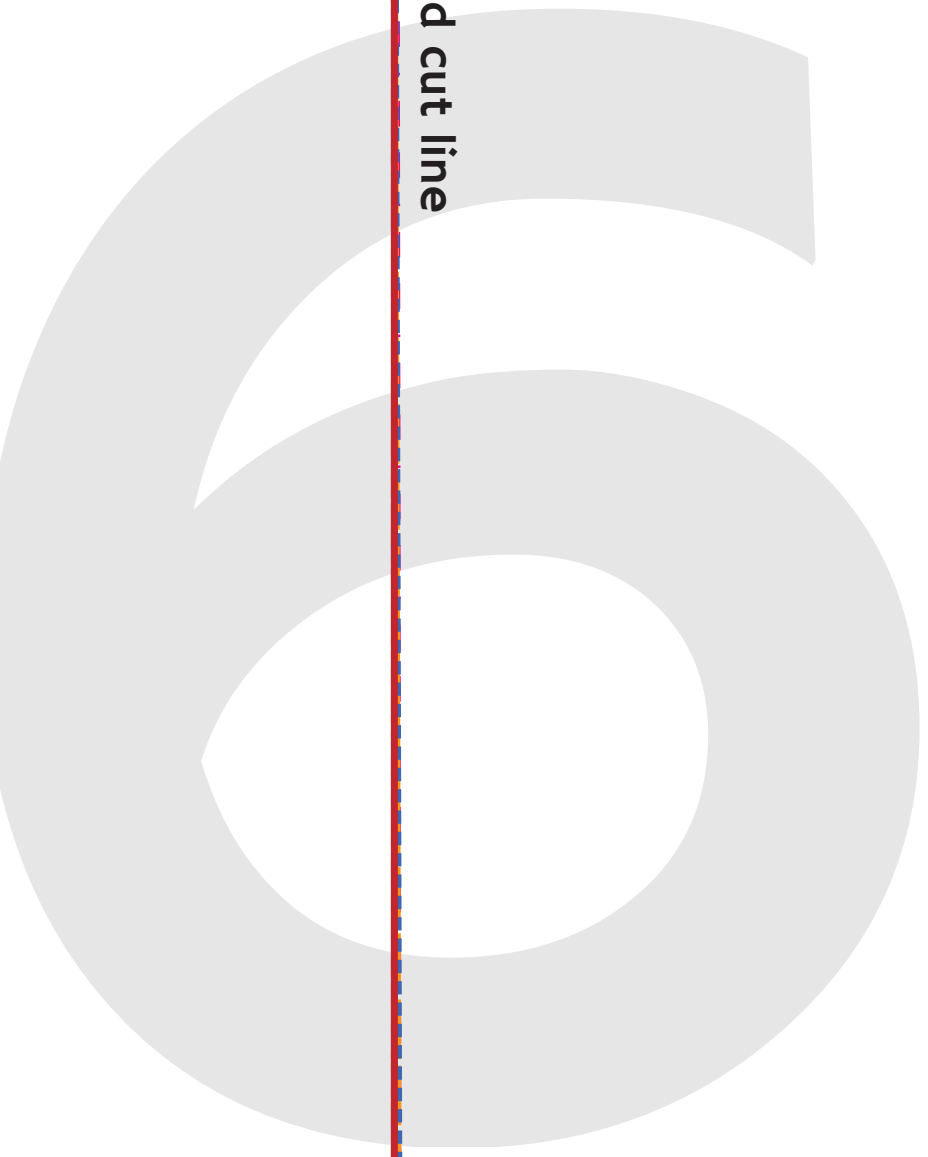
STRETCH



Band cut line

Regular length hem cut line - HEM=2.5cm

Longer length hem cut line - HEM=2.5cm



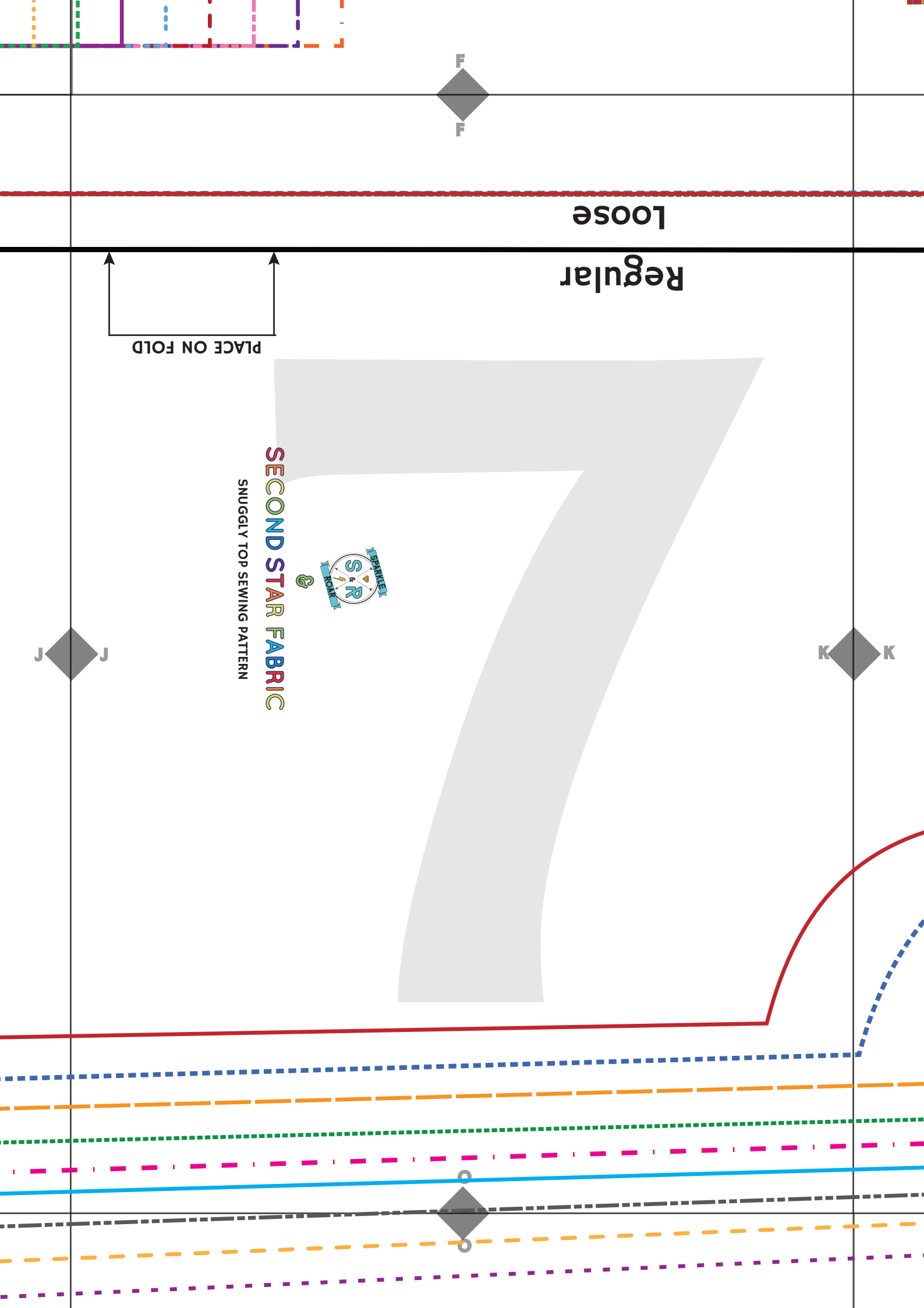
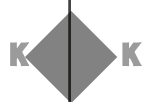
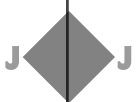
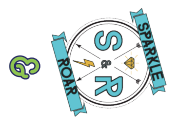
Loose

Regular

PLACE ON FOLD



SECOND STAR FABRIC  
SNUGGLY TOP SEWING PATTERN





3cm x 3cm  
TEST SQUARE

5-6 $\gamma$

6-7 $\gamma$

7-8 $\gamma$

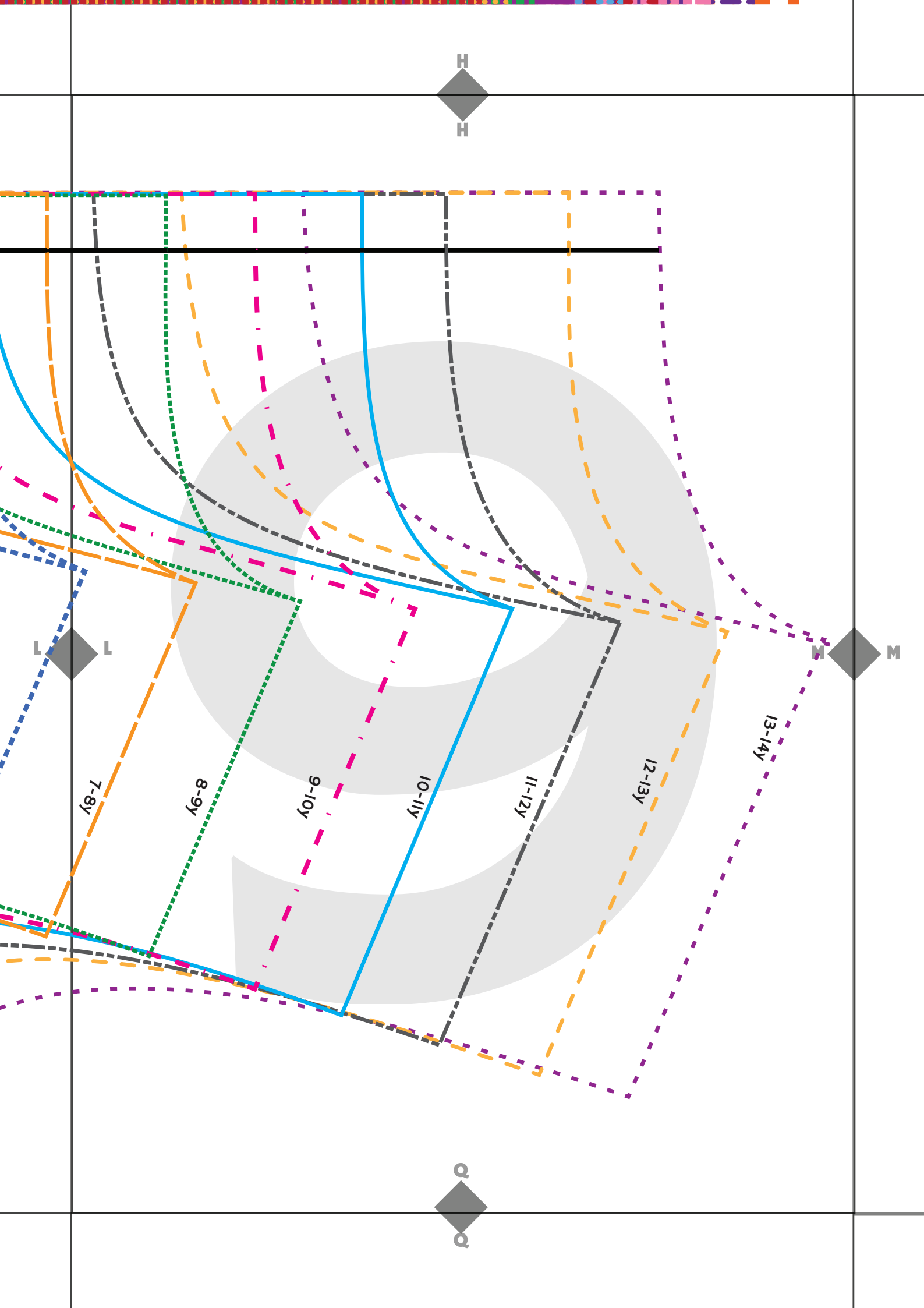
G  
G

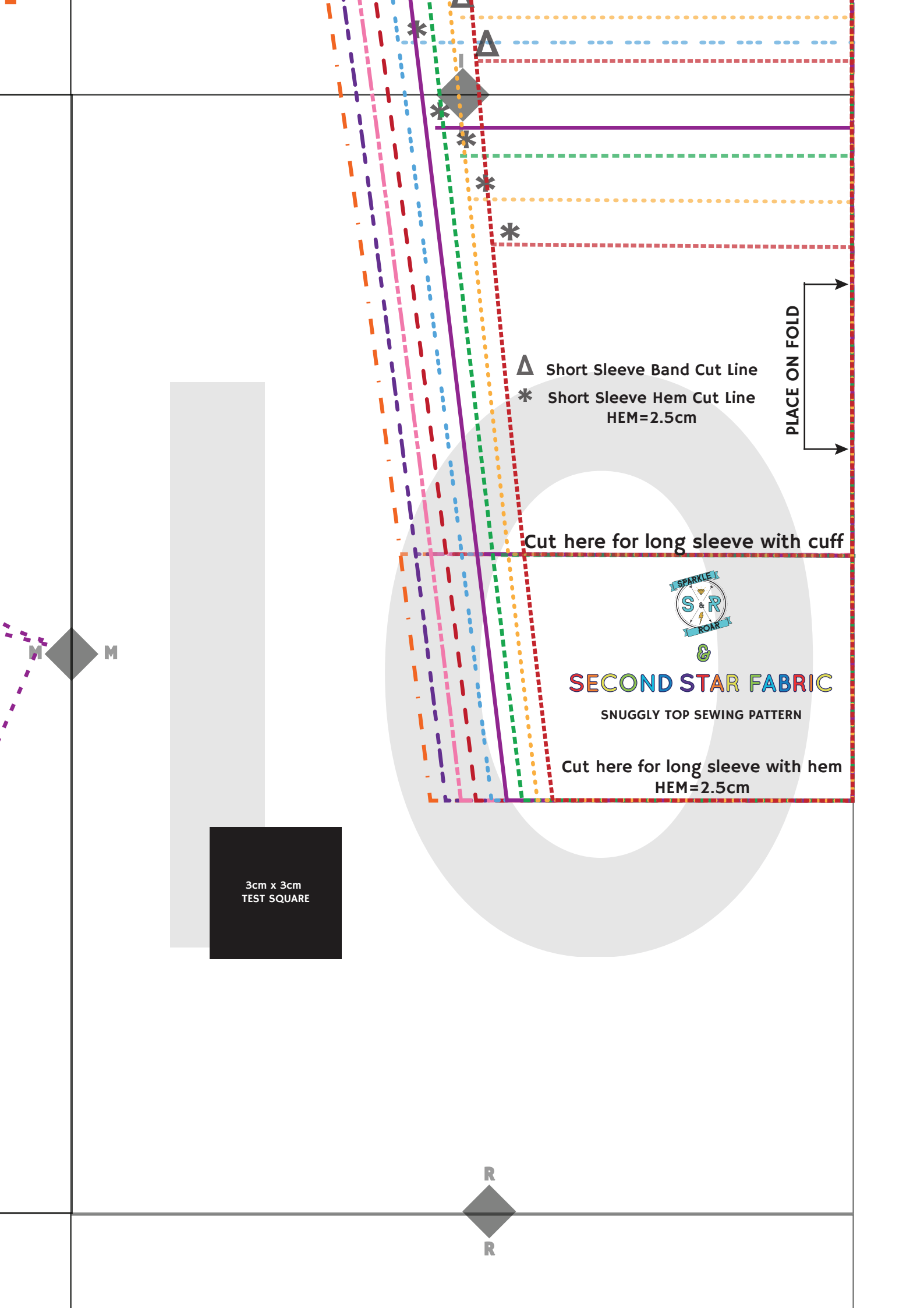
K  
K

L  
L

P  
P







△ Short Sleeve Band Cut Line  
\* Short Sleeve Hem Cut Line  
HEM=2.5cm

PLACE ON FOLD

Cut here for long sleeve with cuff

SPARKLE  
S & R  
ROAR!  
&  
SECOND STAR FABRIC  
SNUGGLY TOP SEWING PATTERN

Cut here for long sleeve with hem  
HEM=2.5cm

3cm x 3cm  
TEST SQUARE

M

R  
R



ADD 2cm if using cotton lycra instead of rib.



**SECOND STAR FABRIC**

SNUGGLY TOP SEWING PATTERN

**Short Sleeve**

ADD 2cm if using cotton lycra instead of rib.



**SECOND STAR FABRIC**

SNUGGLY TOP SEWING PATTERN

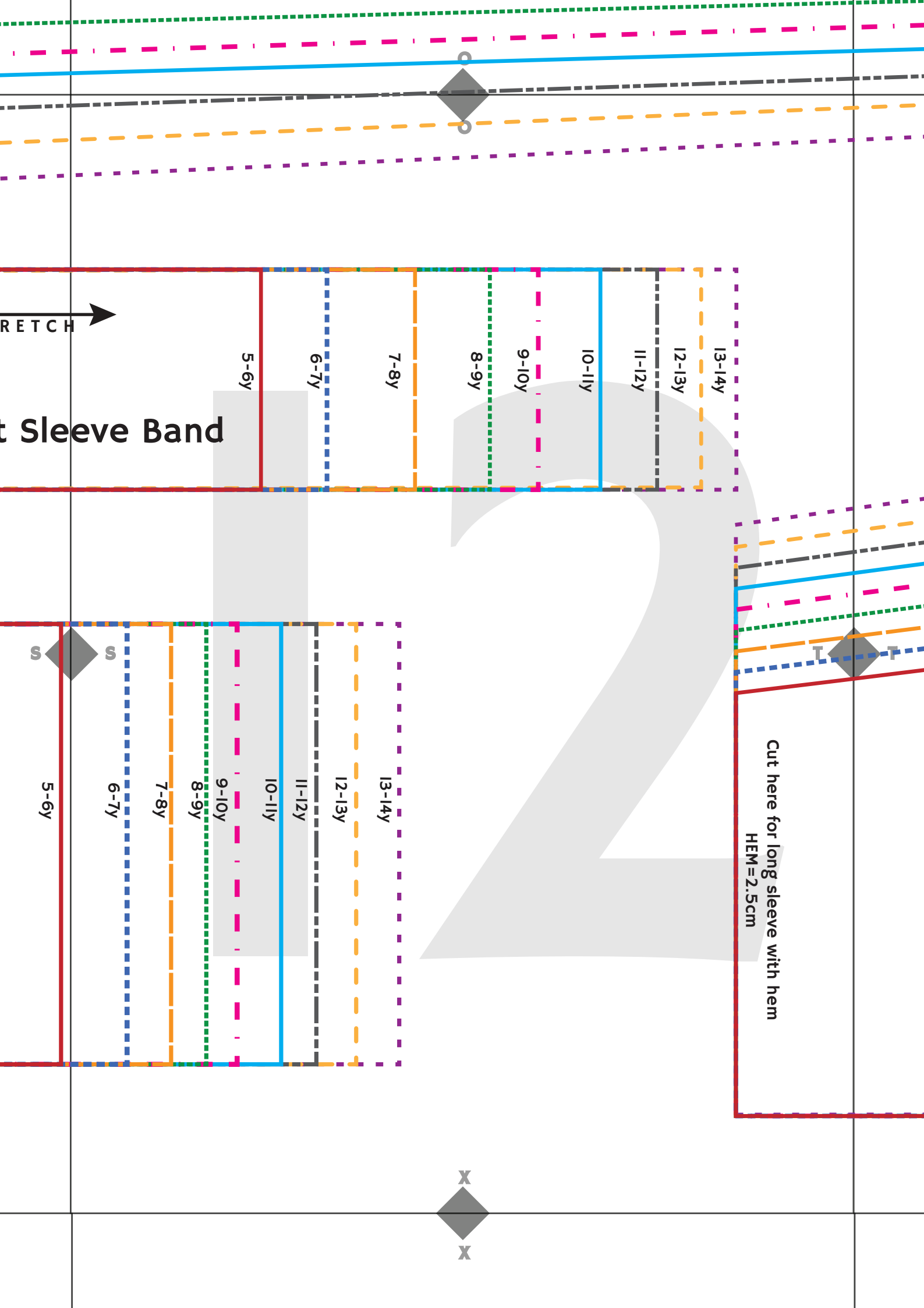
**Long Sleeve Cuff**



5-6y

6-7y





Stretch →

Cut Sleeve Band

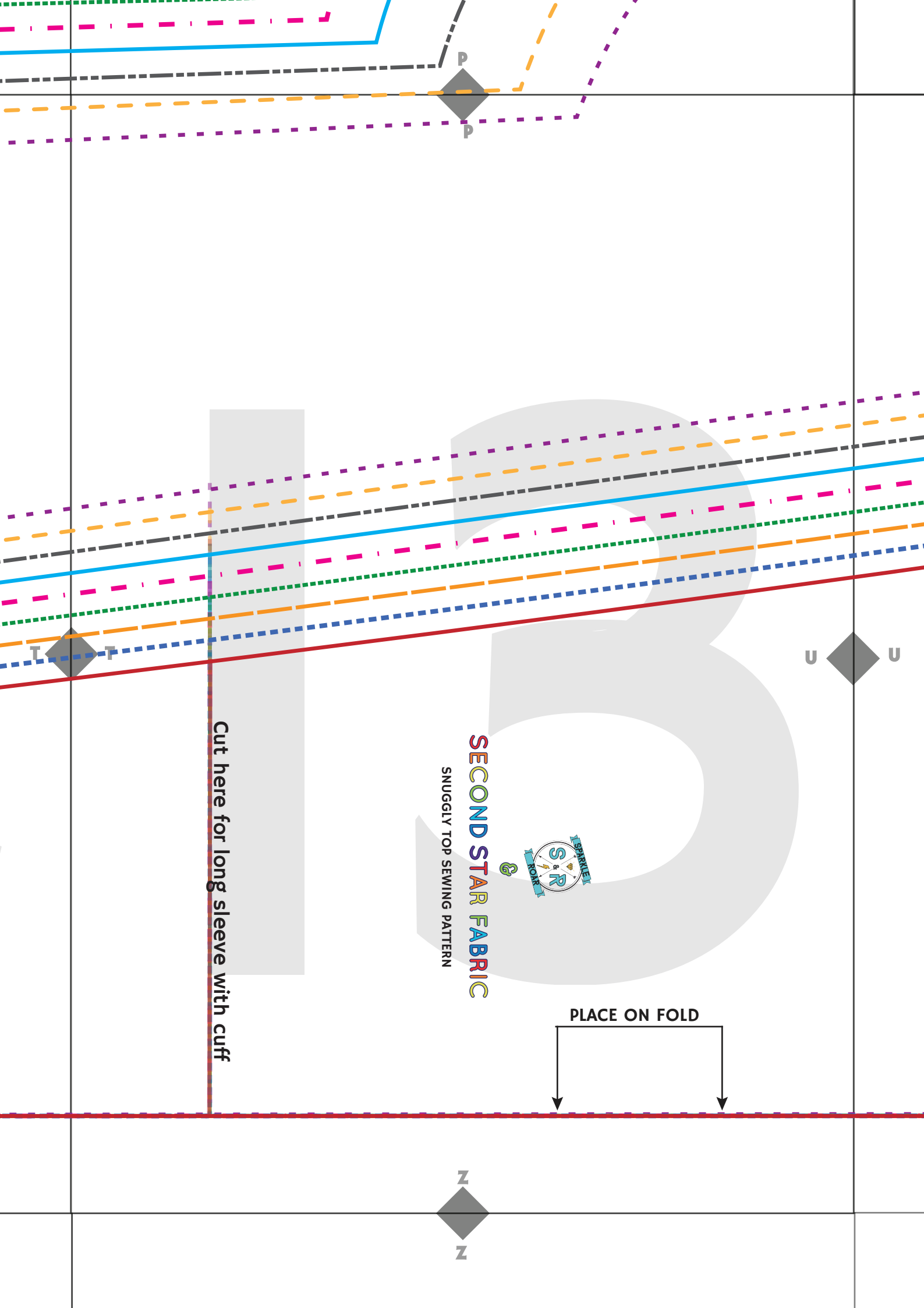
5-6y  
6-7y  
7-8y  
8-9y  
9-10y  
10-11y  
11-12y  
12-13y  
13-14y

Cut here for long sleeve with hem  
HEM=2.5cm

S S

5-6y  
6-7y  
7-8y  
8-9y  
9-10y  
10-11y  
11-12y  
12-13y  
13-14y

X X



P  
P

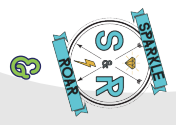
T  
T

U  
U

Z  
Z

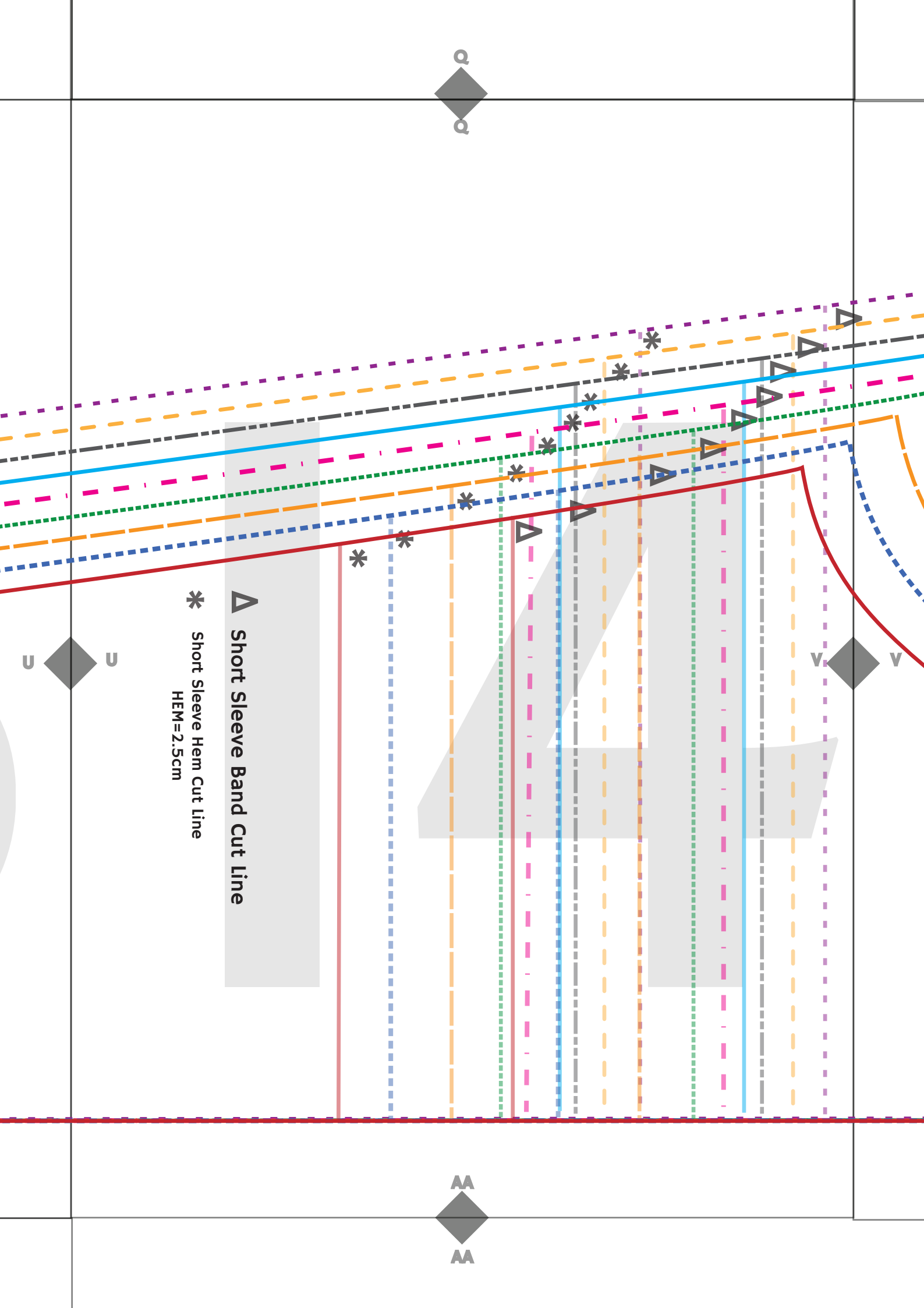
Cut here for long sleeve with cuff

SECOND STAR FABRIC  
SNUGGLY TOP SEWING PATTERN



PLACE ON FOLD





△ Short Sleeve Band Cut Line

\* Short Sleeve Hem Cut Line  
HEM=2.5cm

AA

BB

PP

VV

PP

VV

R

R

3cm x 3cm  
TEST SQUARE

V

V

BB

BB

5-6y

6-7y

7-8y

8-9y

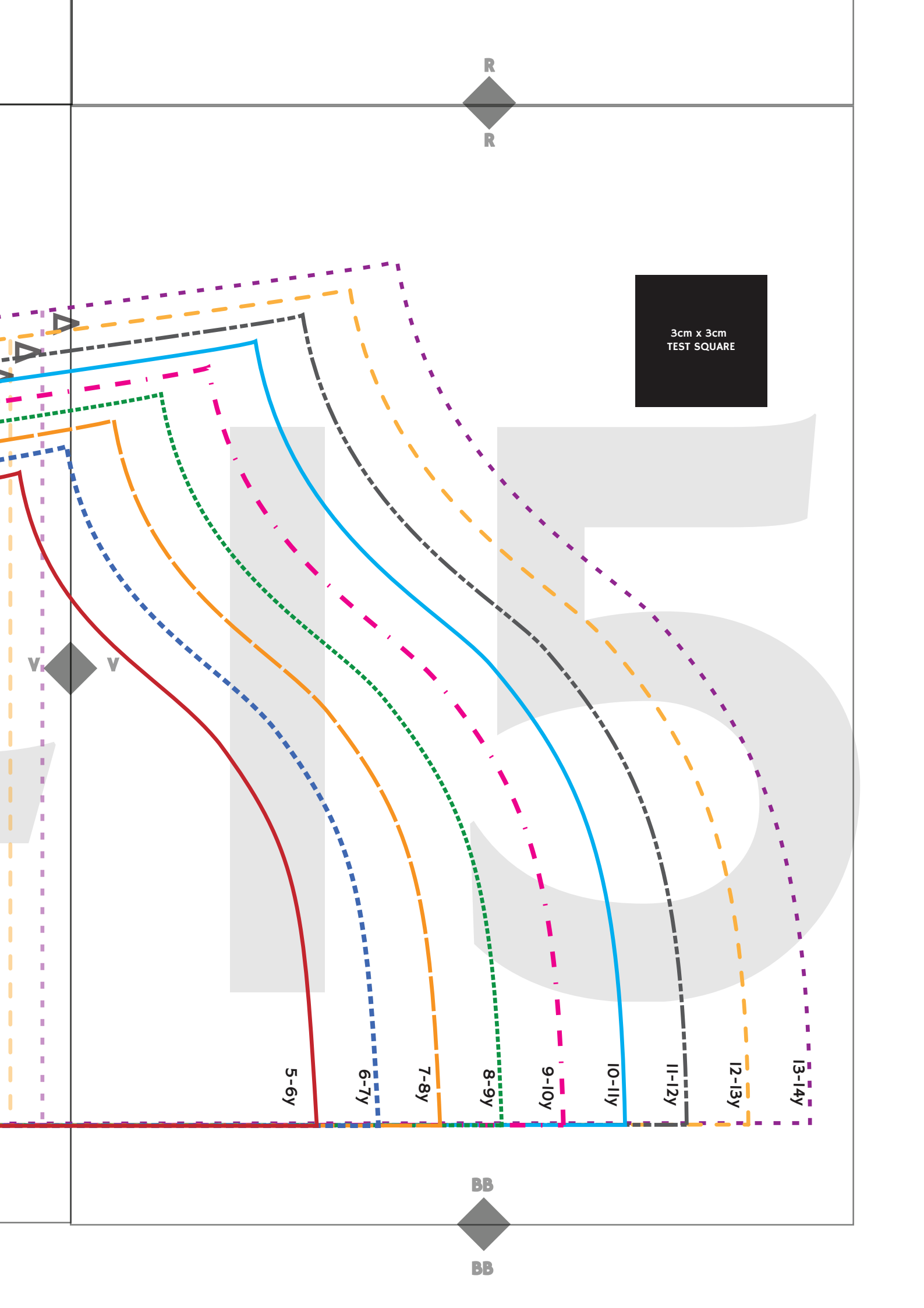
9-10y

10-11y

11-12y

12-13y

13-14y



W  
W

STRETCH

Cut on the LOOSE line if you're making the loose fit or cut on the REGULAR line if you're making the regular fit. ADD 1.5cm when cutting on the fold to whichever line you're cutting on if using cotton lycra instead of rib.



SECOND STAR FABRIC

SNUGGLY TOP SEWING PATTERN

### Hem Band

Loose

Regular

PLACE ON FOLD

CC CC

Loose

Regular

Cut on the LOOSE line if you're making the loose fit or cut on the REGULAR line if you're making the regular fit. ADD 3.5cm to whichever line you're cutting on if using cotton lycra instead of rib.

STRETCH

### Neck band





SEWING PATTERN

CC CC

X X

0-3m 3-6m 6-9m 9-12m 12-18m 18-24m 2-3y 3-4y 4-5y 5-6y 6-7y 7-8y 8-9y

DD DD



SECOND STAR FABRIC  
SNUGGLY TOP SEWING PATTERN

STRETCH

Neck band

5-6y

