

PLACE ON FOLD

SNAPS STYLE
BINDING and
FACING OPTIONS
BACK

Grainline

For **LINED** Option: Cut 1 facing on fold
then join to skirt & cut 1 full dress on fold

For **BINDING** Option: Join to bottom half
then CUT 1 on fold

● Lined Option Shoulder Cut Line
★ Bands Option Shoulder Cut Line



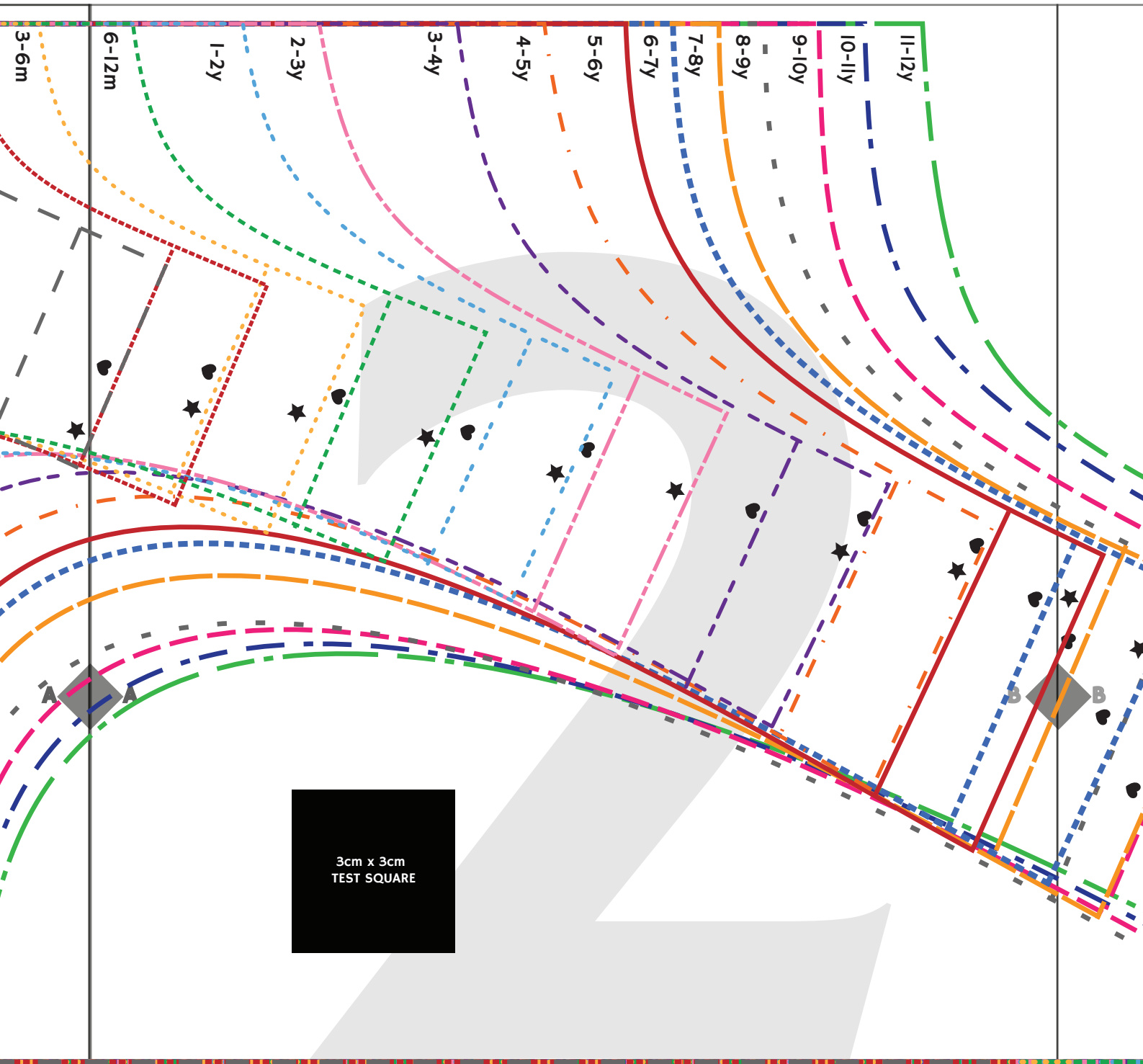
0-3m
3-6m
6-12m

SNAPS STYLE



NOTE: This band is 20cm wide on each end.



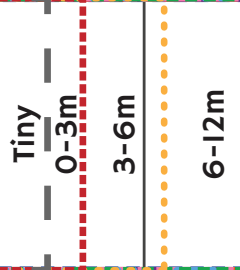


NAPS STYLE ARM BINDING

CUT 2



NOTE: This band is 2cm longer than necessary to allow a 1cm overhang on each end. See the instructions for further information



Cotton Lycra

Rib

SNAPS STYLE NECK BINDING

CUT 2- 1 Front and 1 back



NOTE: This band is 2cm longer than necessary to allow a 1cm overhang on each end. See the instructions for further information



Tiny

0-3m

3-6m

Woven Stabiliser

CUT 4

Tiny to 0-3m

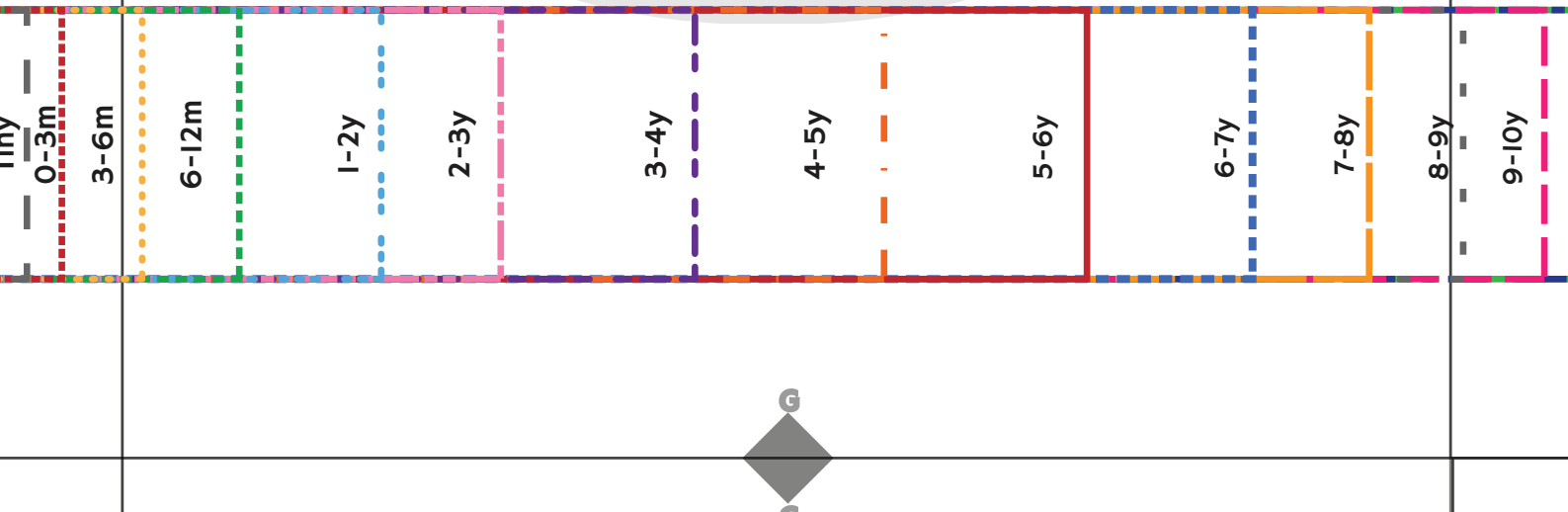
3-6m to 6-12m

1-2y to 4-5y

5-6y to 8-9y

9-10y to 11-12y

3cm x 3cm
TEST SQUARE



tiny

0-3m

3-6m

6-12m

1-2y

2-3y

3-4y

4-5y

5-6y

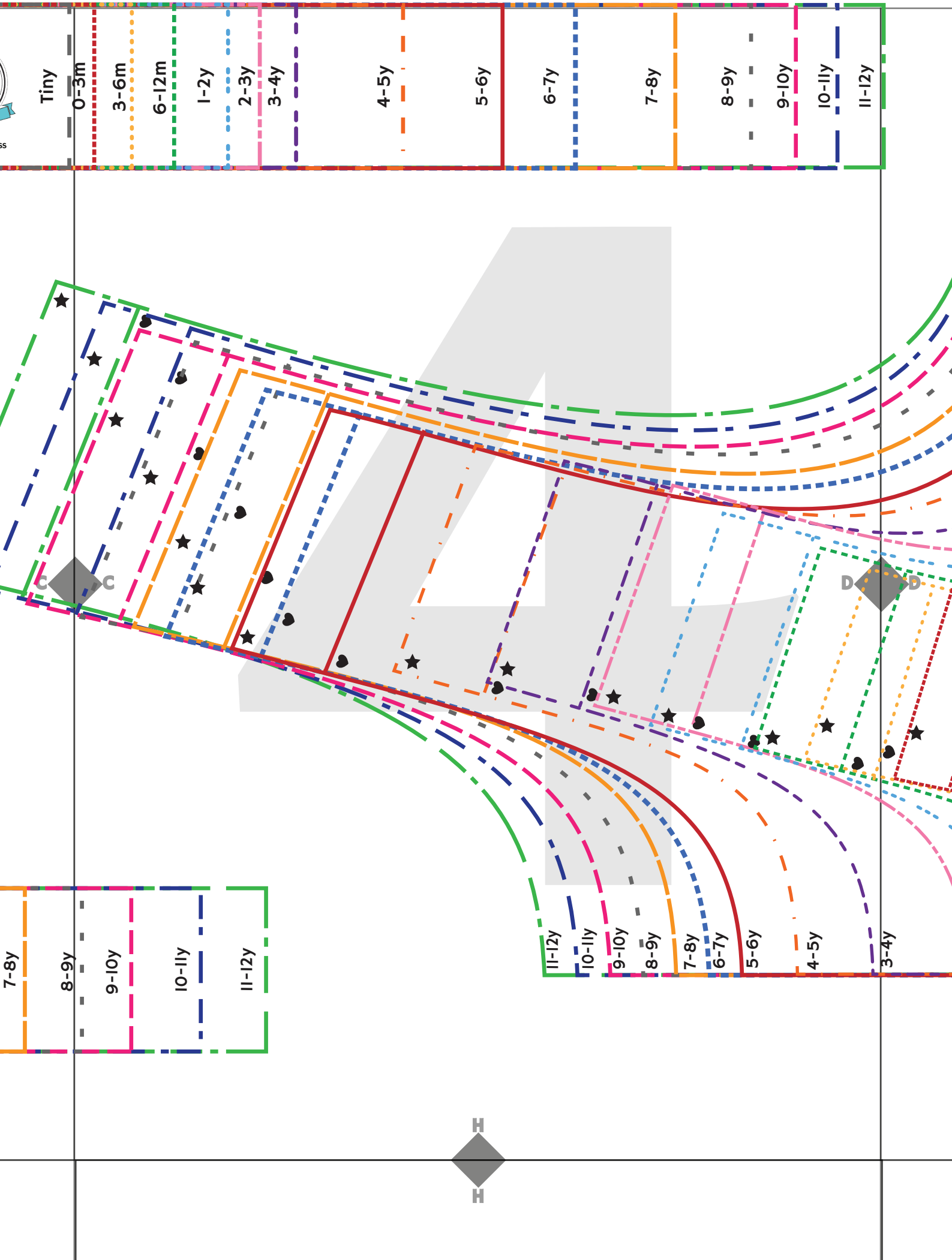
6-7y

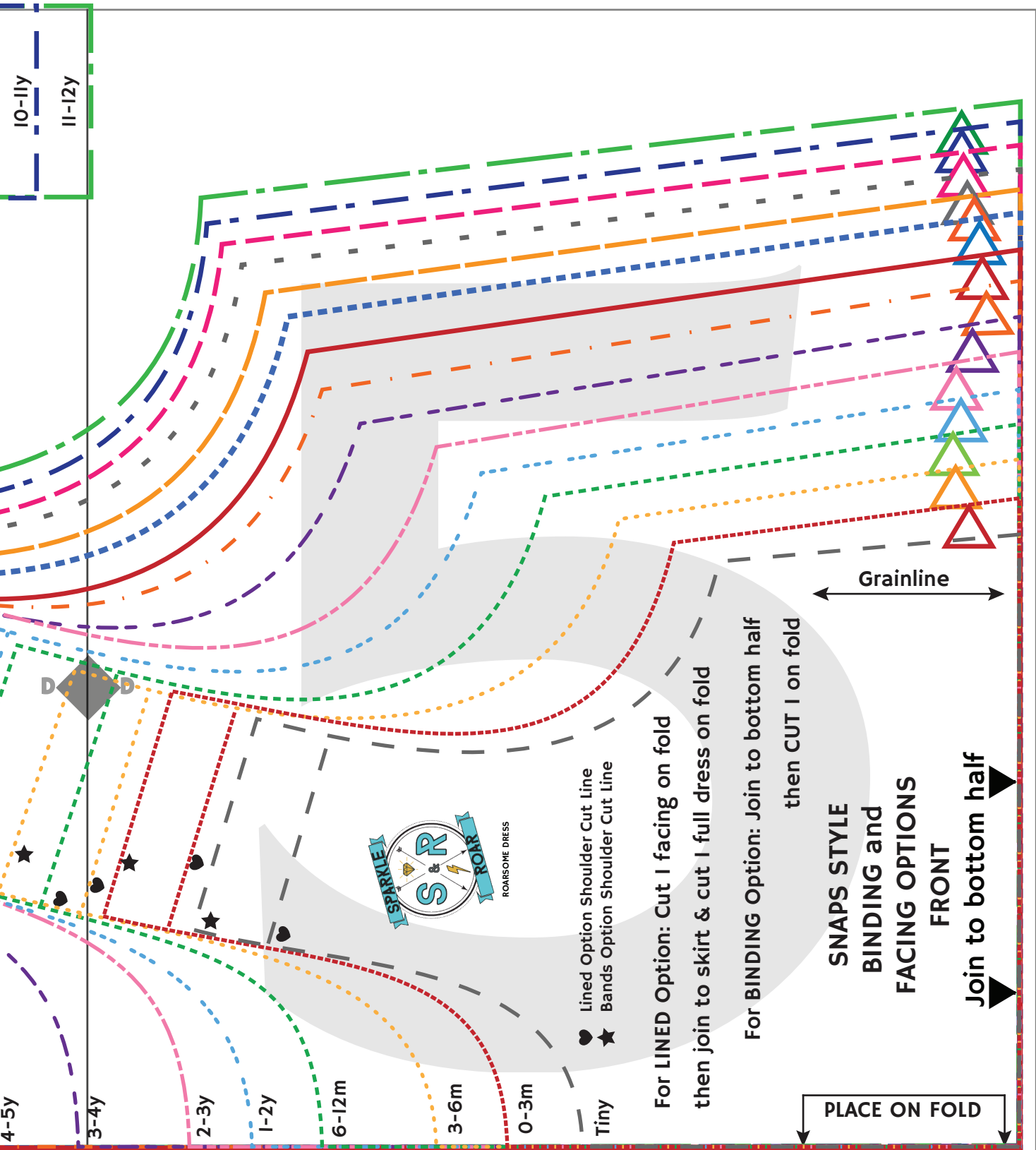
7-8y

8-9y

9-10y







- ♥ Lined Option Shoulder Cut Line
- ★ Bands Option Shoulder Cut Line

For LINED Option: Cut 1 facing on fold
then join to skirt & cut 1 full dress on fold

For BINDING Option: Join to bottom half
then CUT 1 on fold

**SNAPS STYLE
BINDING and
FACING OPTIONS**

FRONT
Join to bottom half

PLACE ON FOLD

Grainline

10-11y
11-12y



1-2y

6-12m

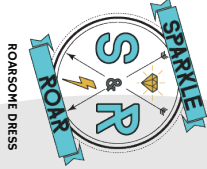
3-6m

0-3m

Tiny

Grainline

PLACE ON FOLD



**SNAPS STYLE
BAND OPTION
BACK**

Join to bottom half
then CUT 1 on fold

Join to bottom half

J

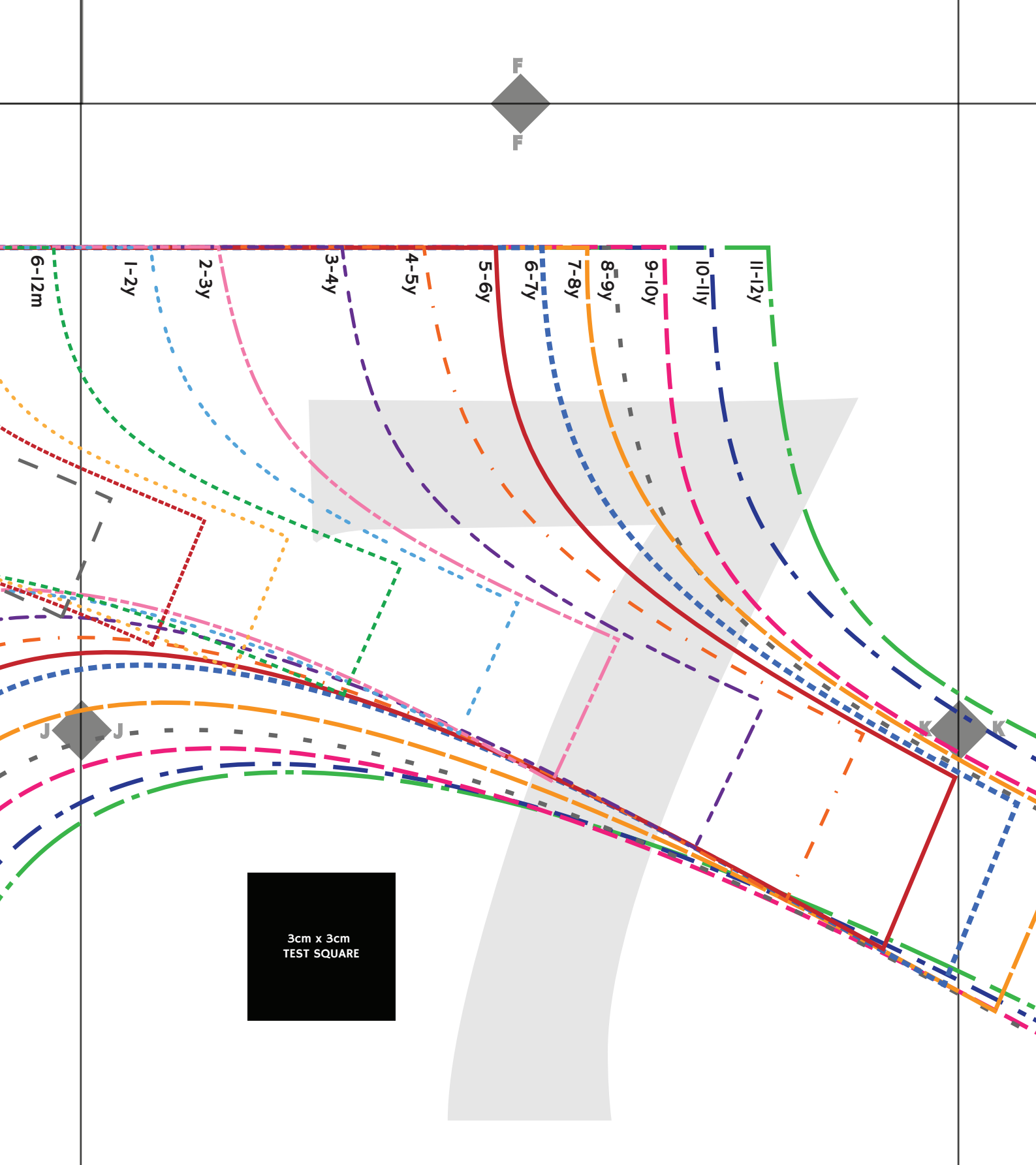
J

SNAPS

Cotton lycra

Rib

NOTE: This band on each



SNAPS STYLE ARM BAND CUT 2

STRETCH
↔

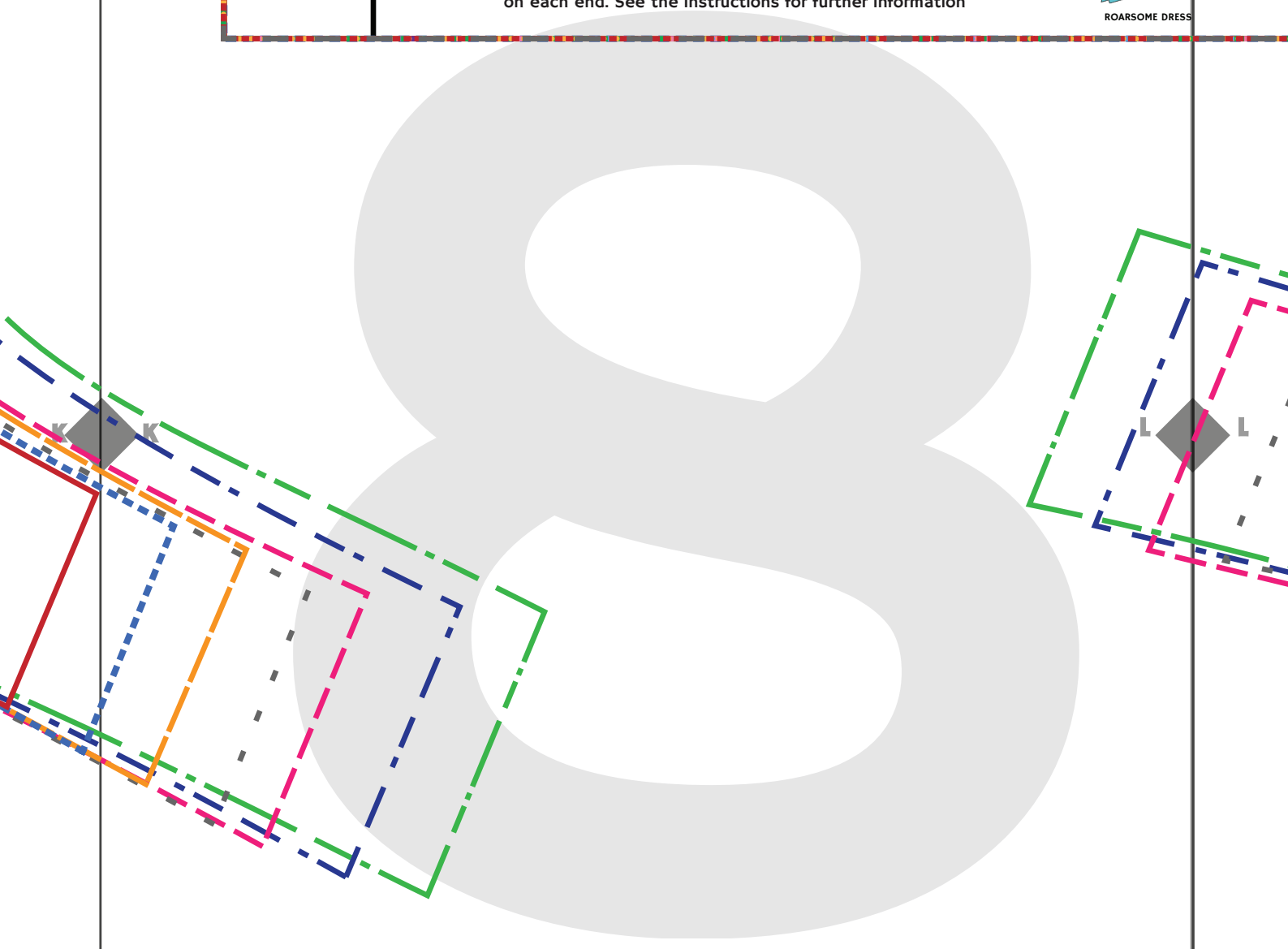
NOTE: This band is 2cm longer than necessary to allow a 1cm overhang on each end. See the instructions for further information





Cotton Lycra	<h2 style="text-align: center;">SNAPS STYLE NECK BAND</h2> <h3 style="text-align: center;">CUT 2- 1 Front and 1 back</h3> <p style="text-align: center;">← STRETCH →</p> <p style="text-align: center;">NOTE: This band is 2cm longer than necessary to allow a 1cm overhang on each end. See the instructions for further information</p>	 <p style="font-size: small;">ROARSOME DRESS</p>
--------------	--	---

Tiny



Tiny	0-3m	3-6m	6-12m	1-2y	2-3y	3-4y	4-5y	5-6y
------	------	------	-------	------	------	------	------	------



Tiny

0-3m

3-6m

6-12m

1-2y

2-3y

3-4y

4-5y

5-6y

6-7y

7-8y

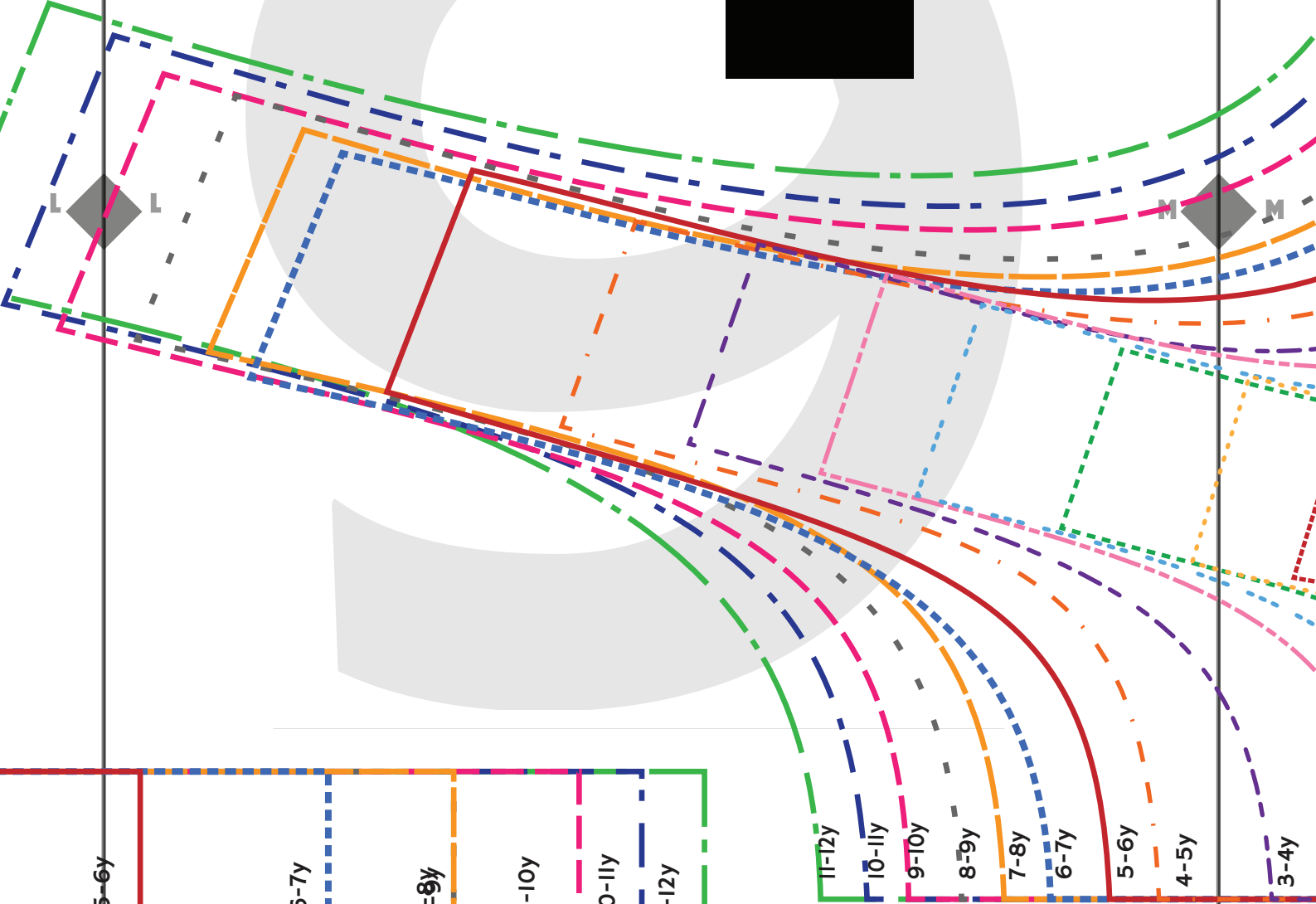
8-9y

9-10y

10-11y

11-12y

3cm x 3cm
TEST SQUARE



5-6y

6-7y

8-9y

9-10y

10-11y

11-12y

11-12y

10-11y

9-10y

8-9y

7-8y

6-7y

5-6y

4-5y

3-4y

10-11y
11-12y

5-6y
4-5y
3-4y
2-3y
1-2y
6-12m
3-6m
0-3m
Tiny



SNAPS STYLE BAND OPTION

FRONT
Join to bottom half
then CUT I on fold
Join to bottom half

Grainline

PLACE ON FOLD

