

4-5y

3-4y

2-3y

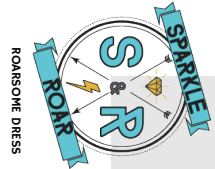
1-2y

6-12m

3-6m

0-3m

Tiny



PULLOVER STYLE

BAND OPTION

FRONT

Join to bottom half
then CUT 1 on fold

Join to bottom half

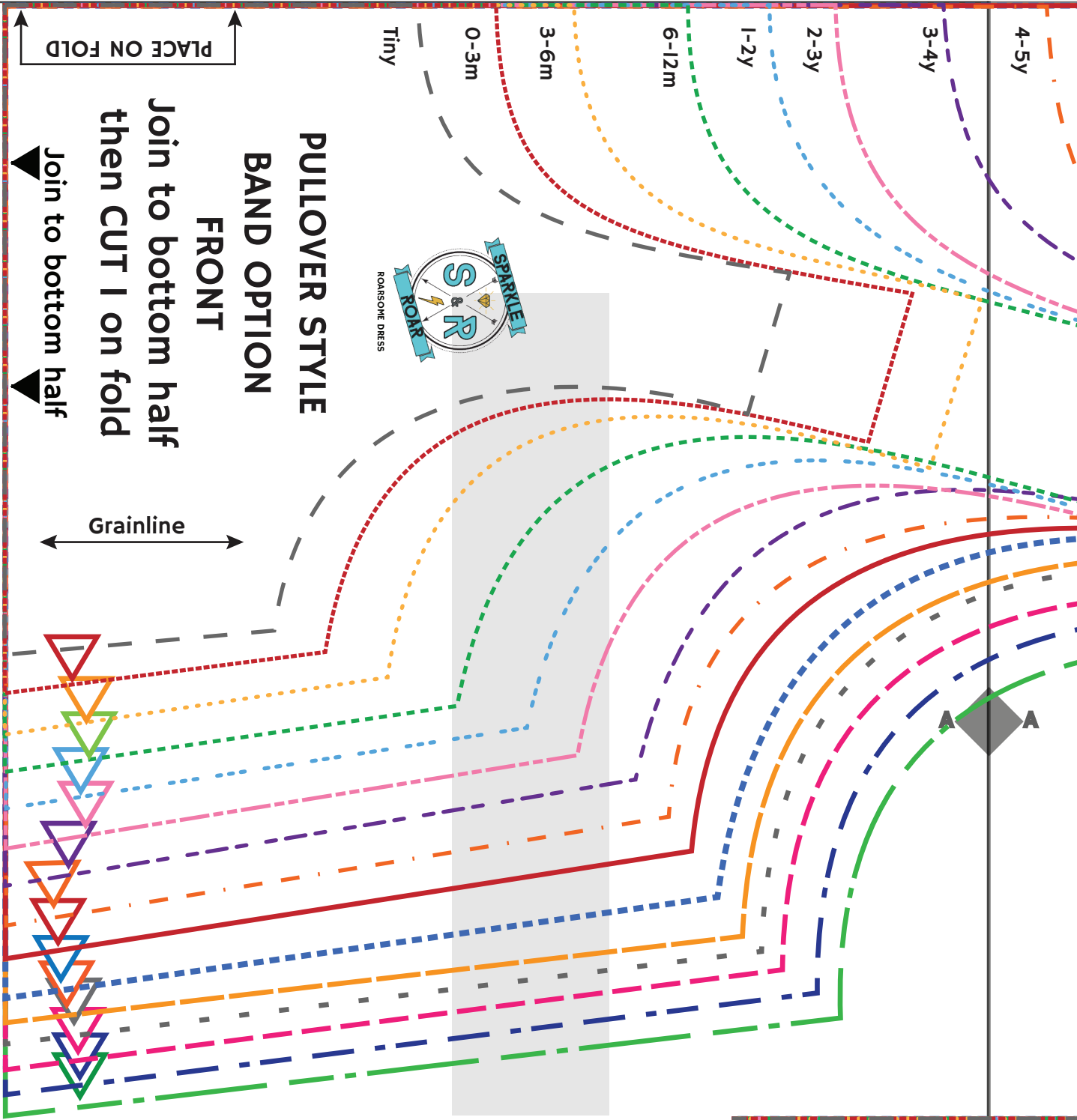
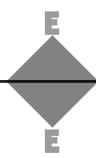
Grainline

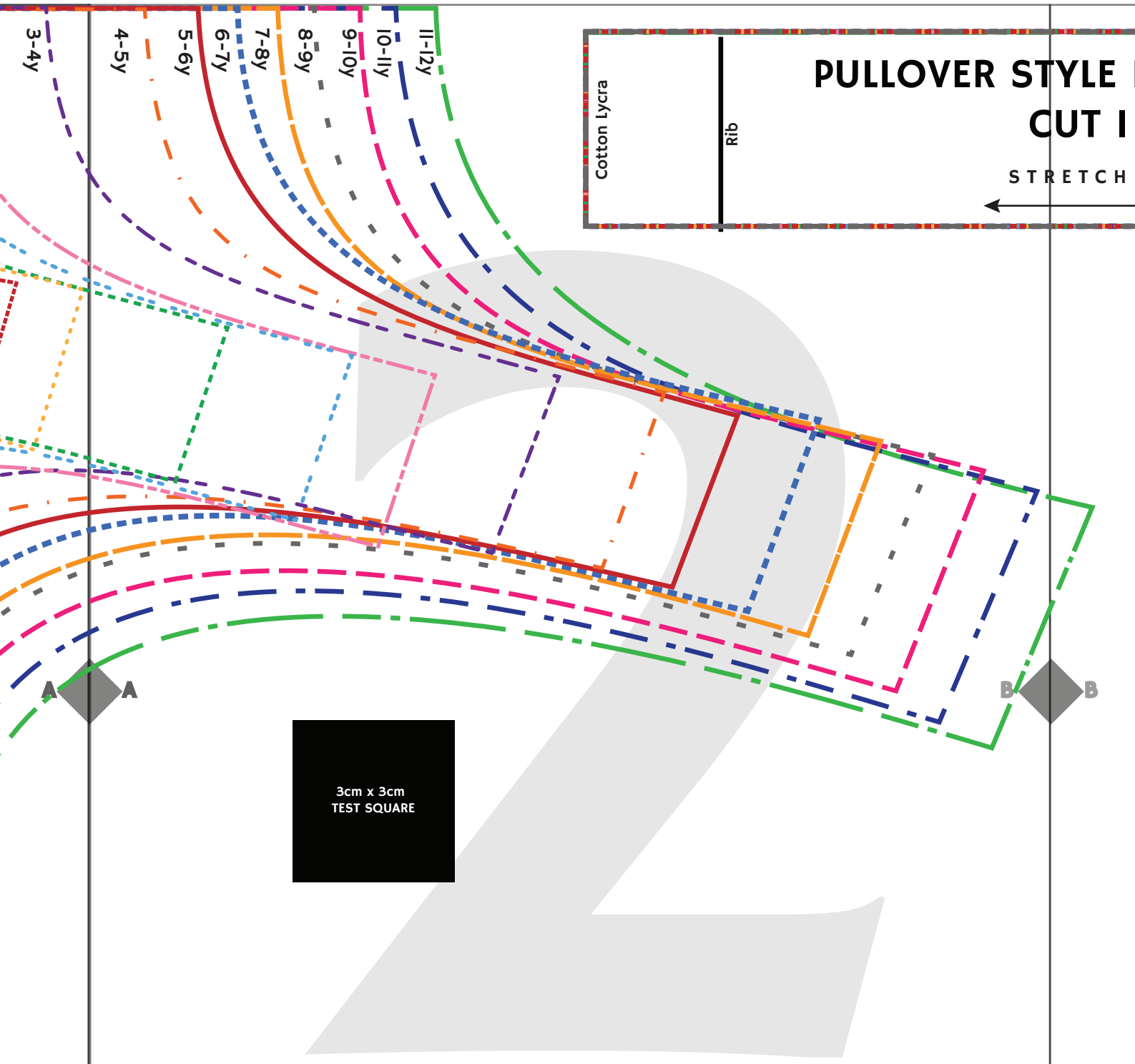
PLACE ON FOLD

PULLOV

Rib

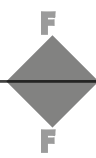
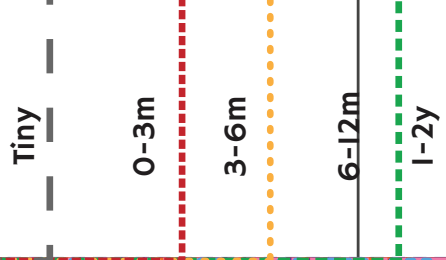
Cotton Lycra





PULLOVER STYLE ARM BAND CUT 2

STRETCH ↔



ROAR STYLE NECK BAND CUT 1

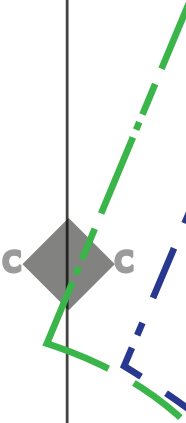
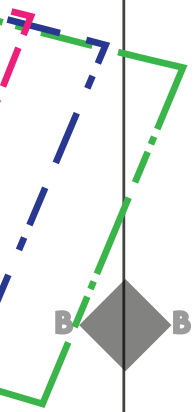
STRETCH



Tiny

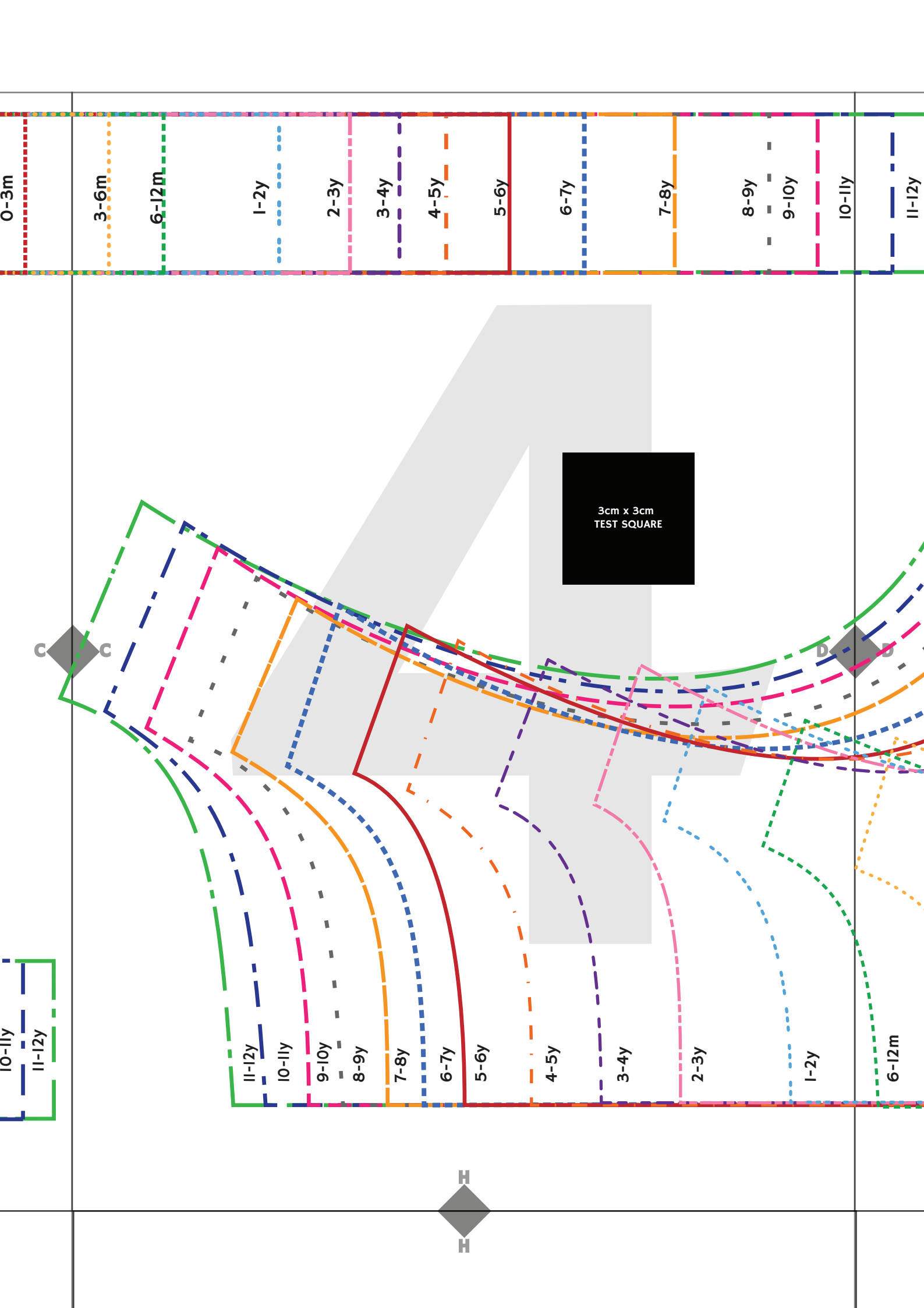
0-3m

3-6m



3-6m	6-12m	1-2y	2-3y	3-4y	4-5y	5-6y	6-7y	7-8y	8-9y	9-10y	10-11y	11-12y
------	-------	------	------	------	------	------	------	------	------	-------	--------	--------





3cm x 3cm
TEST SQUARE

C

D

H

10-11y
11-12y

11-12y

10-11y

9-10y

8-9y

7-8y

6-7y

5-6y

4-5y

3-4y

2-3y

1-2y

6-12m

9-10y

10-11y

11-12y

1-2y

6-12m

3-6m

0-3m

Tiny



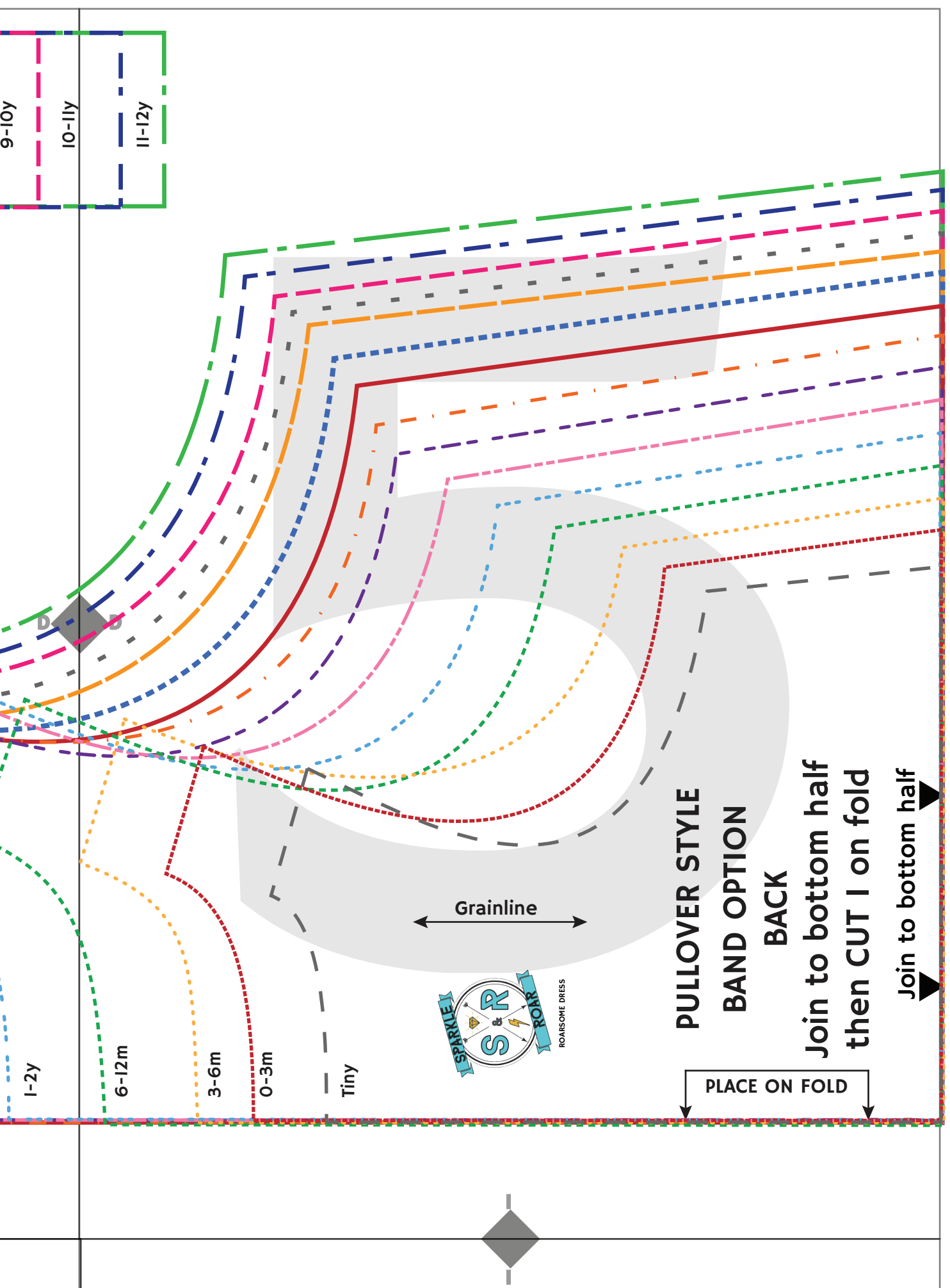
Grainline

**PULLOVER STYLE
BAND OPTION
BACK**

**Join to bottom half
then CUT I on fold**

Join to bottom half

PLACE ON FOLD



4-5y

3-4y

2-3y

1-2y

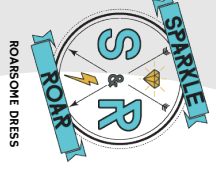
6-12m

3-6m

0-3m

Tiny

Cotton Lycra



PULLOVER STYLE LINED and BINDING OPTION FRONT

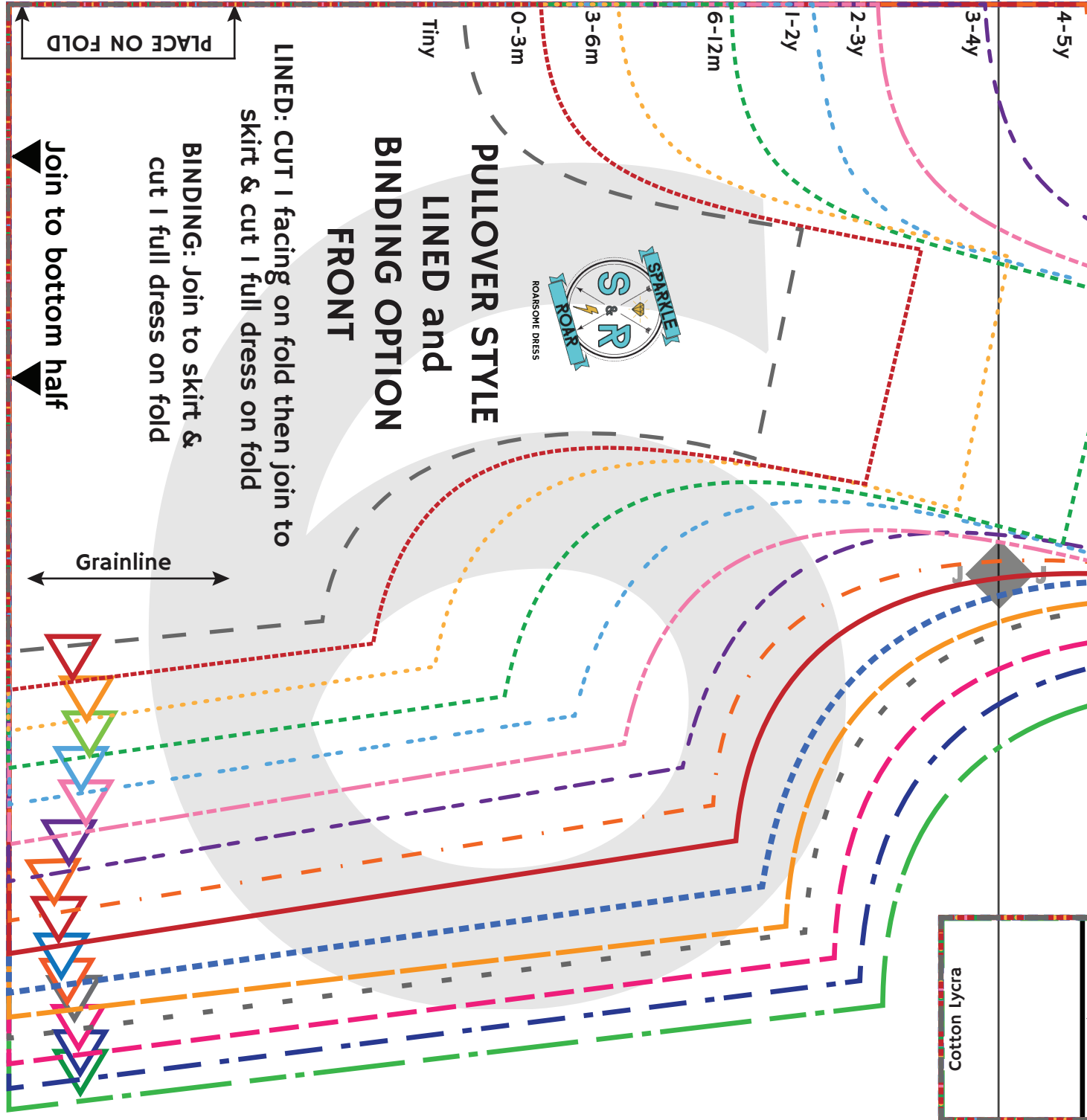
LINED: CUT 1 facing on fold then join to skirt & cut 1 full dress on fold

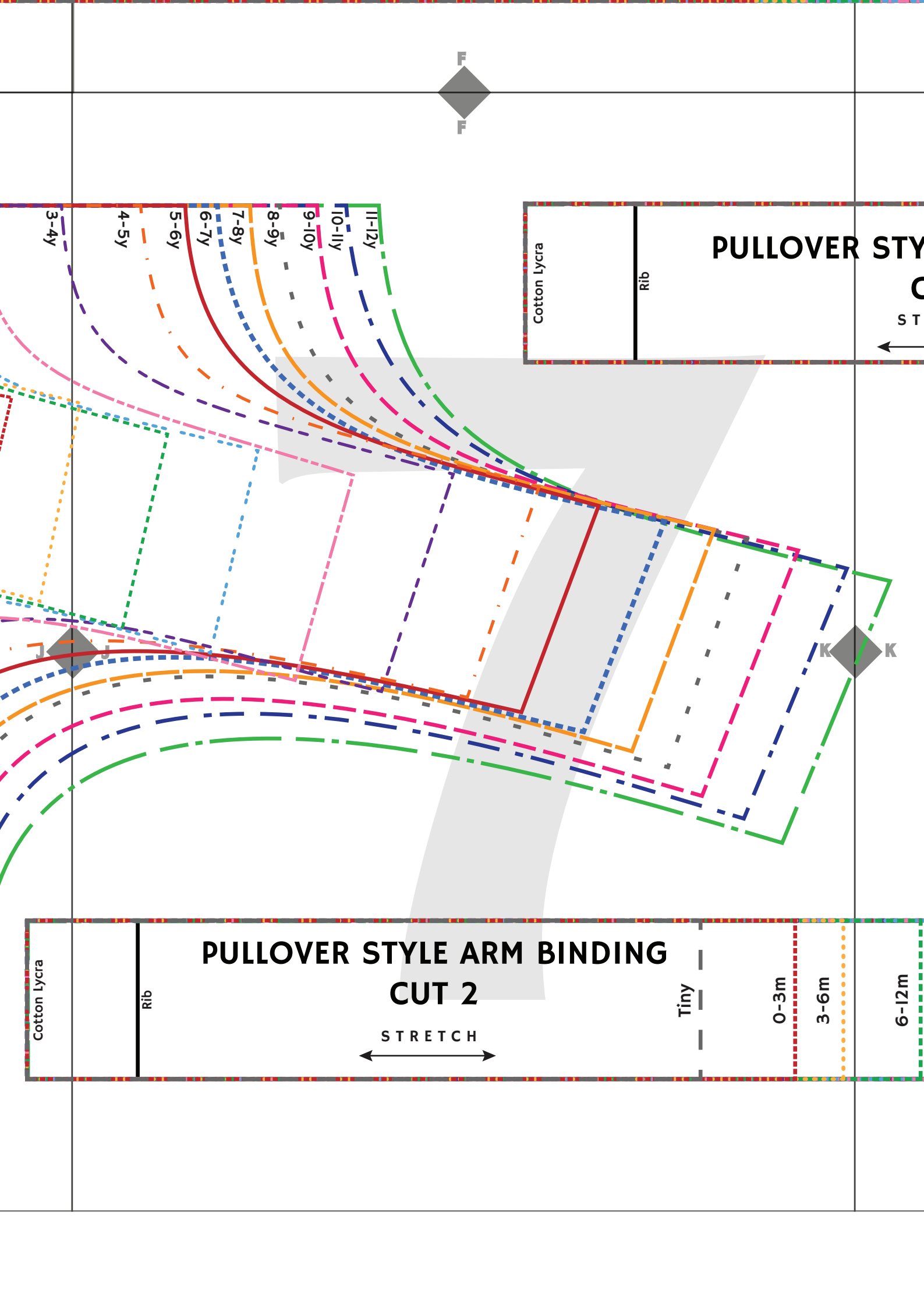
BINDING: Join to skirt & cut 1 full dress on fold

PLACE ON FOLD

Join to bottom half

Grainline





3-4y
4-5y
5-6y
6-7y
7-8y
8-9y
9-10y
10-11y
11-12y

PULLOVER STYLE
C
ST
←

Cotton Lycra

Rib

K K

**PULLOVER STYLE ARM BINDING
CUT 2**

Cotton Lycra

Rib

Tiny

0-3m

3-6m

6-12m

STRETCH



OVER STYLE NECK BINDING

CUT I

STRETCH



Tiny

0-3m

3-6m

6-12m

3cm x 3cm
TEST SQUARE

3-6m

6-12m

1-2y

2-3y

3-4y

4-5y

5-6y

6-7y

7-8y

8-9y

9-10y

10-11y



