



ROARSOME DRESS

A classic A-Line dress PDF Sewing pattern for ages Tiny Baby to age 11-12 years



Description

This pattern has a classic A-line fit with variable hem heights and hemming options. There is space for two set of poppers on the front shoulder tabs of the snapped variation to allow for differing heights and growth. The bodice section can be lined with a facing to provide a neat edge around the top seam or you can also use binding/ bands variation instead of a facing. There is also a reversible option.

Features:

- ♥ Side Pockets
- ♥ Front Bodice or Skirt Pockets
- ♥ Snapped tabs or pullover style
- ♥ Binding or Bands on top edging
- ♥ Facing Option
- ♥ Reversible
- ♥ Different hem height options and either regular, binding or rolled hem variations

FABRIC OPTIONS:

Use fabric with at least a 25% stretch value for the main dress and facing. You can use cotton interlock if you would like to but you'll get slightly less stretch and ease in the fit. You can use the same fabric for the binding/bands or ribbing, if using interlock for the cuffs be sure to add an extra 1cm to all seams to allow for the lack of stretch in the fabric. This pattern is not drafted for use with woven fabrics.

SEAM ALLOWANCE:

There is a 8mm (0.25 inch) seam allowance included in the pattern. This means you can serge along the edge of the fabric without trimming any fabric off with the blade.

PREWASH:

Remember to prewash all fabrics to allow them to preshrink and to remove any factory residues.

NOTIONS:

You will need jersey fabric and a small amount of woven cotton for the stabiliser pieces, a sewing machine using a zigzag or stretch stitch or an overlocker. If using a sewing machine remember to use ballpoint or stretch needles and polyester thread.

Snaps and a snap fixing tool

2 x Male Snaps per back tab and 4 x female snaps for front tabs if you want to add 2 rows of snaps to the front tabs.

GET IN TOUCH: If you're stuck at any point, feel free to get in touch :)

tanya@sparkleandroar.com

and make sure you join the facebook group to share pics and discuss patterny things

<https://www.facebook.com/groups/sparkleandroarpatterns/>

LEGAL STUFF: If you'd like to make and sell clothing using this pattern that's totally fine :)

PLEASE DON'T COPY THIS PATTERN AND RESELL IT AS YOUR OWN PATTERN!!!

Apart from it being uncool, It's literally taking food away from my children :(This is my livelihood.

Just because you know I can't go after you legally doesn't mean it's ok to do.

It's still gross to rip off someone else's hard work and pretend it's yours.

SIZE GUIDE:

Use these measurements to work out which size pattern to make. These are the measurement guide that each size should fit up to but of course as the straps in the snaps version have a bit of space for extra sets of snaps and there are different hem height options there is some leeway on the max height. Also as the fabric is jersey there is also a fair bit of leeway on the chest size. Use the chest size as a starting point.

You can always adjust the dress length to be longer if you need to. Other adjustments you can make is trimming down the sides if you have a slim, tall child or cutting the dress length shorter and reducing the front tab length if you have a shorter child if you're making the snaps version. The pattern testers have made the 4-5y chest and graded up to age 7 length in some cases. See the grading image on page 5 on how to do this.

SIZE	HEIGHT		CHEST	
	cm	inches	cm	inches
0-3M	60	23.6	42	16.5
3-6M	68	26.7	44	17.3
6-9M	72	28.3	46	18.1
9-12M	78	30.7	48	18.9
12-18M	83	32.7	50.5	19.9
18-24M	88	34.6	52	20.5
2-3Y	94	37	54	21.3
3-4Y	100	39.4	56	22
4-5Y	108	42.5	59	23.2
5-6Y	116	45.7	61	24.0
6-7Y	122	48.0	63	24.8
7-8Y	128	50.4	67	26.4
8-9Y	134	52.8	69	27.2
9-10Y	140	55.1	73	28.7
10-11Y	146	57.5	75	29.5
11-12Y	152	59.8	77	30.3

FABRIC REQUIREMENTS:

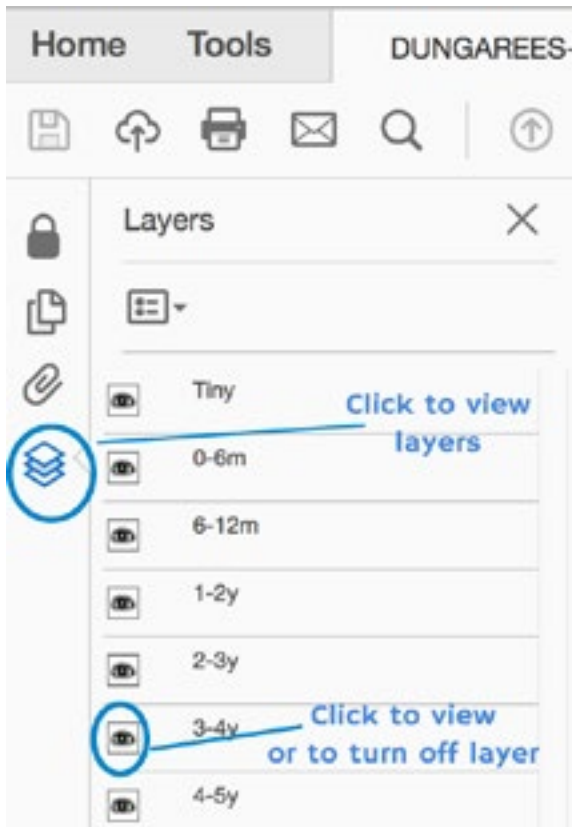
Calculated on knit fabric of 150cm width:

You can use the same fabric for the facing without adding additional meterage or I have calculated the facing separately in case you want to use a contrasting fabric. From size 8-9Y and up you will not be able to fit the dress and facing all on the same length of fabric. All the other sizes up to that you will be able to cut out the facing and main dress all from the same length should you wish to.

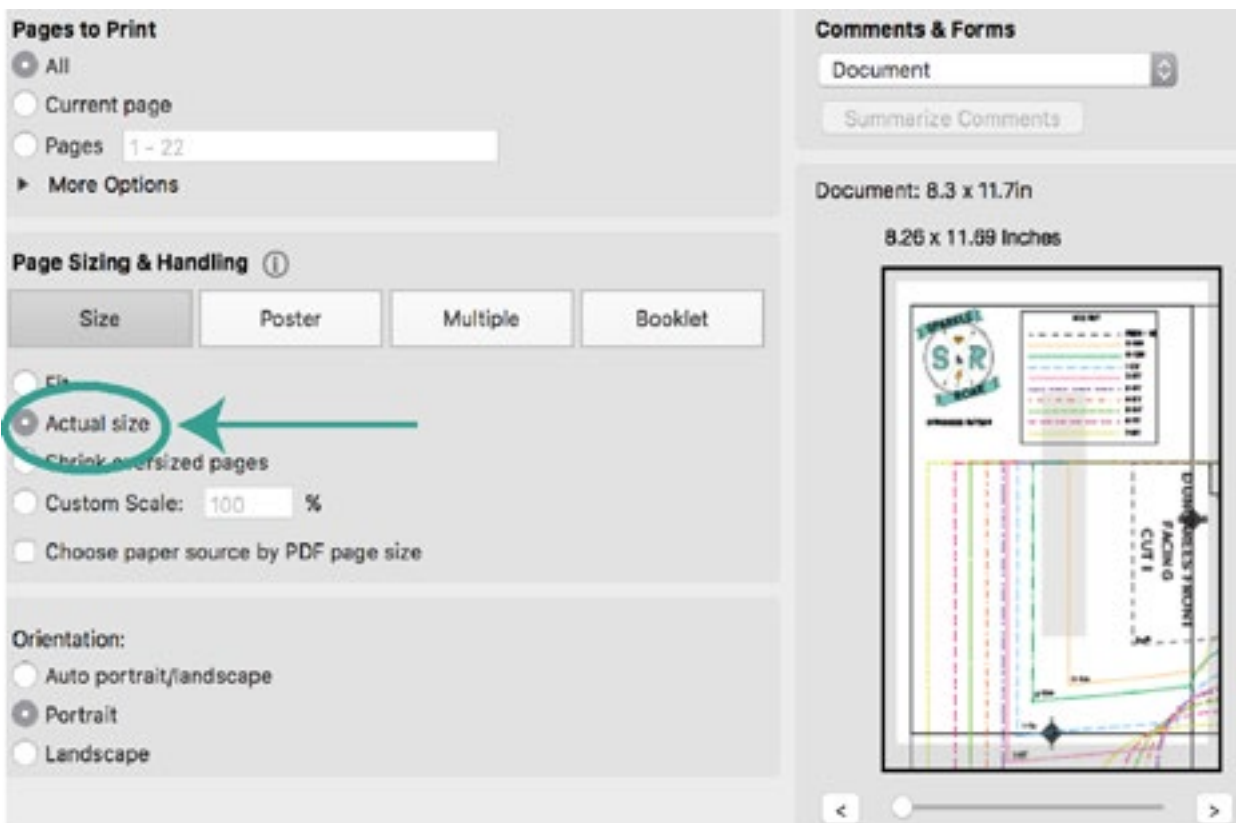
metric	Dress Snaps	Facing	Dress Pullover
SIZE			
Tiny	40cm	20cm	40cm
0-3M	50cm	25cm	45cm
3-6M	50cm	25cm	45cm
6-12M	55cm	30cm	50cm
1-2Y	60cm	30cm	55cm
2-3Y	65cm	35cm	60cm
3-4Y	70cm	35cm	65cm
4-5Y	70cm	40cm	65cm
5-6Y	80cm	40cm	70cm
6-7Y	80cm	40cm	75cm
7-8Y	85cm	40cm	80cm
8-9Y*	85cm	45cm	80cm
9-10Y	90cm	45cm	80cm
10-11Y	90cm	45cm	85cm
11-12Y	95cm	45cm	90cm

HOW TO PRINT THE PATTERN:

The pattern is designed to be printed on A4 paper in portrait format.



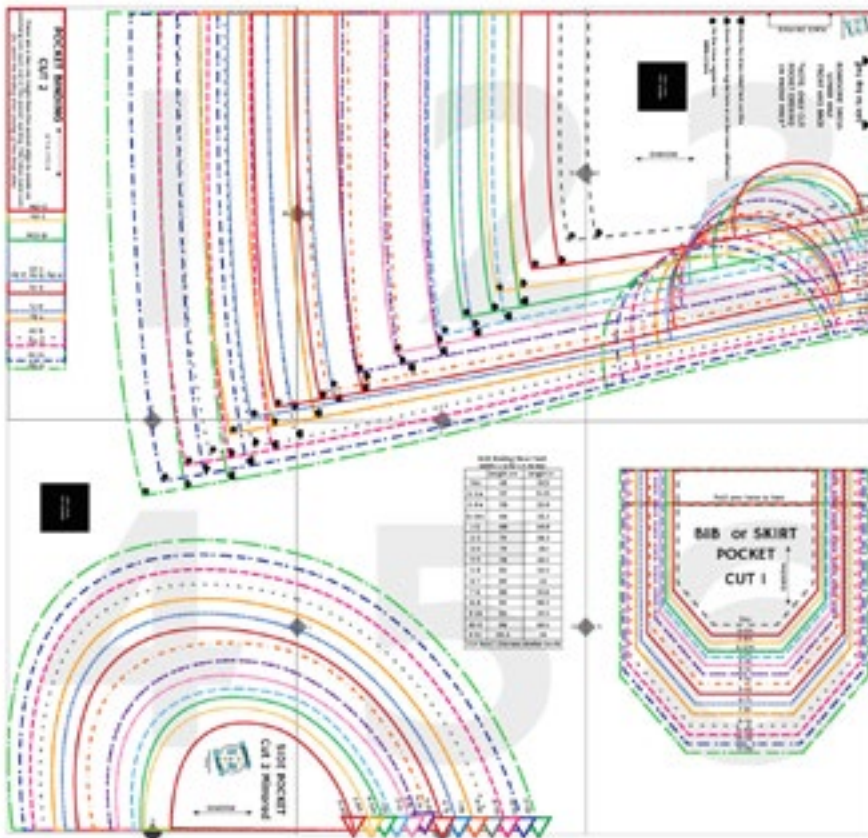
In Acrobat Reader you can click on the layers option and choose which layers you want to view and print. Leave them all checked to print all or uncheck the sizes you don't want to print.



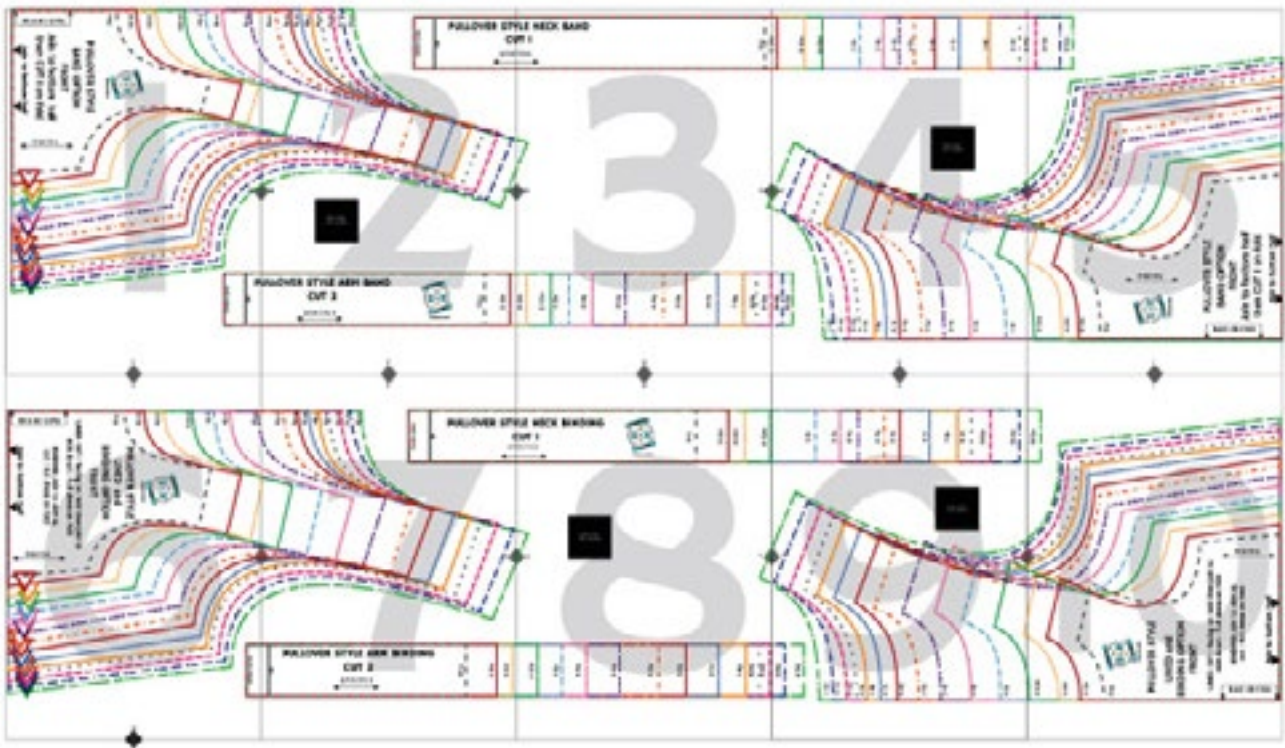
Print "Actual Size" or "100%" to make sure the pattern prints out at the correct size.

IMPORTANT:

ALWAYS MEASURE THE TEST SQUARE ON THE PATTERN TO MAKE SURE IT HAS PRINTED AT THE CORRECT SCALE



The lower half of the dress "skirt" and pockets are in one pattern file. You will need to print this no matter which bodice options you choose. Pockets are of course optional but the skirt pieces are integral.



There are two Bodice variations: The Snaps Bodice and the Pullover Bodice. These are located each in their own PDF File. Depending on which option and variation you are making you might only need to print a few pages rather than both files.

Arrange the printed pages as shown on these diagrams then stick them together making sure you line up the lettered squares on each page. You can then cut your pattern pieces out. If you want to bluetack the top to bottom half pieces cut an extra cm above the bottom half join line, this will help you be able to add and remove the top half with ease :)



If you're making a facing option use the Bodice piece to cut a facing first then join the Bodice to the Skirt pattern piece and cut out a full dress :)

If you're making the other options fit the Bodice and Skirt pattern pieces together as shown here. You can stick them together or you can cut a bit extra either above the skirt piece or below the bodice and blue tack them and mix and match as you go. NOTE: Remember you need to reuse the Skirt pattern piece for the front and back Bodice pieces.

Some printers have printed the top halves slightly different during testing even though they're the correct size on the digital pattern. The result is the top half comes out slightly narrower than the bottom half by a few mms. If yours happens to do this line up the outer lines when sticking the top and bottom half together, it's not going to cause any issues with sizing of the pattern at all.

If you are going to stick the pieces together permanently you will need to print out 2 copies of the Skirt piece.

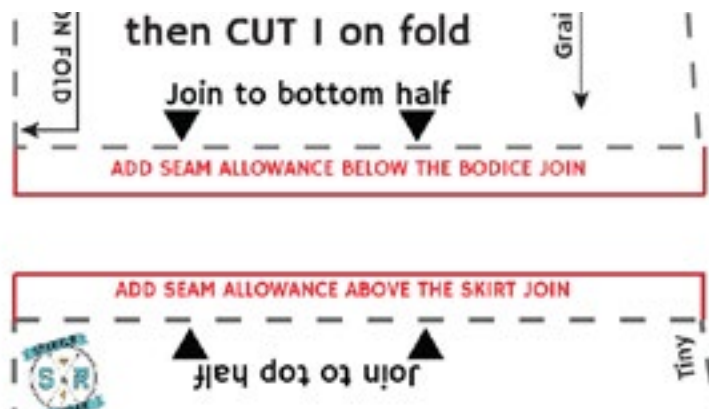
NOTE ABOUT THE SIDE POCKETS: The pocket cut line only corresponds to the FRONT of the dress and only if you are making the side pockets variation. DO NOT CUT OUT THE POCKET LINE ON THE DRESS BACK PIECE.

GRADING:

Always use the closest matching bodice size to get a nice fit on the top half and if your child is taller than that size's height recommendation then grade the length to the right size as shown in the image above. You can draw a line from the armpit point towards the skirt hem and gradually merge it into the skirt line of the larger size.

COLOUR BLOCKING:

If you'd like to colour block the dress to give the dress a more unique look or to save on fabric this is super easy. Just keep the Bodice and Skirt pieces as separates instead of joining them together and add a 8mm seam allowance to the join edges of the Bodice and Skirt pattern pieces.





Sew the front Bodice and Skirt pieces together then do the same with the back pieces. Once you've sewn together the separate Bodice and Skirt pieces you can top stitch them down to give a neater finish. Follow the rest of the pattern instructions as normal depending on which variation you're using.

This is a beautiful example of colour blocking by Amy from 'Beginning with E'

Here is a quick guide on which pages to print depending on the size and variation you're making:

	SNAPS STYLE BODICE FILE			PULLOVER STYLE BODICE FILE			SKIRT FILE
	Facing/ Reversible	With Bands	With Binding	Facing/ Reversible	With Bands	With Binding	Skirt
Tiny	1-3,5	6-10	1-5	6,10	1-3, 5	6-8,10	2-3
0-3M	1-5	6-10	1-5	6,10	1-3, 5	6-8,10	2-3
3-6M	1-5	6-10	1-5	6,7,9,10	1-5	6-8,10	2-3
6-12M	1-5	6-10	1-5	6,7,9,10	1-5	6-10	2-3
1-2Y	1-5	6-10	1-5	6,7,9,10	1-5	6-10	2-3
2-3Y	1-5	6-10	1-5	6,7,9,10	1-5	6-10	2-3
3-4Y	1-5	6-10	1-5	6,7,9,10	1-5	6-10	1-3
4-5Y	1-5	6-10	1-5	6,7,9,10	1-5	6-10	1-4
5-6Y	1-5	6-10	1-5	6,7,9,10	1-5	6-10	1-4
6-7Y	1-5	6-10	1-5	6,7,9,10	1-5	6-10	1-4
7-8Y	1-5	6-10	1-5	6,7,9,10	1-5	6-10	1-4
8-9Y*	1-5	6-10	1-5	6,7,9,10	1-5	6-10	1-5
9-10Y	1-5	6-10	1-5	6,7,9,10	1-5	6-10	1-5
10-11Y	1-5	6-10	1-5	6-10	1-5	6-10	1-5
11-12Y	1-5	6-10	1-5	6-10	1-5	6-10	1-5

On the SKIRT Pattern file:

Side pockets are on pages 4-5 and side pocket edging is on page 1. Front pocket is on page 6. Skirt hem binding measurements are on page 5.

TABLE OF CONTENTS:

Click on the links if you're viewing this on a device or use the page numbers if you've printed this off.

POCKETS

[Side pockets option:](#) [Page 9](#)

[Front pocket option:](#) [Page 12](#)

PULLOVER STYLE

[All Variations Start Here:](#) [Page 14](#)

[With bands:](#) [Page 15](#)

[With binding:](#) [Page 17](#)

[Reversible/ Lining:](#) [Page 20](#)

SNAPS STYLE

[Reversible/ Lining:](#) [Page 25](#)

[With bands:](#) [Page 31](#)

[With binding:](#) [Page 33](#)

[Finishing the shoulders:
bands and binding options](#) [Page 36](#)

[Placing the snaps:](#) [Page 38](#)

HEMS

[Regular hem:](#) [Page 39](#)

[Rolled/ Lettuce hem:](#) [Page 40](#)

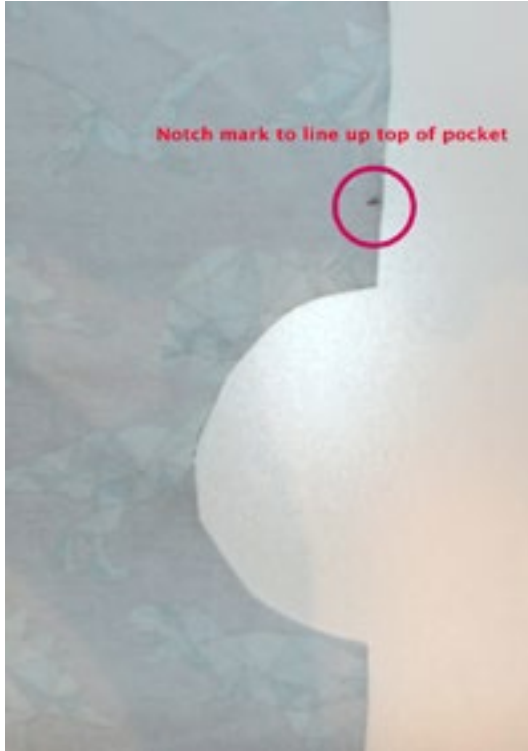
[Binding hem:](#) [Page 41](#)

[Reversible turned in hem:](#) [Page 43](#)

Construction

FOR ALL VERSIONS OF THE DRESS; If you are adding side pockets, this needs to be done first, then skip to either pullover or snaps style.

SIDE POCKETS OPTION:



Cut out along the pocket line on the dress front only and transfer the marking to the fabric piece. This will show you where to place the top edge of the pocket piece.

Place both pocket pieces onto the dress front with the right side of the pocket against the wrong side of the dress front lining up the top of each pocket piece with the markings. Then stitch along where the red lines indicate. You can use a zigzag stitch or a coverstitch to sew the pocket pieces on.





Flip the dress front right side up. It should look something like this.

Take the pocket binding pieces and fold them wrong sides together along the long edge.



Pin the pocket binding to the raw edge of the pocket opening like this leaving 1cm of binding over each edge. You should have to stretch the binding slightly to fit around the pocket opening. This will give it a good shape once it's sewn in place.

Sew along the raw edges of the pocket opening and binding.

Follow the same process for the other pocket.





Your finished pocket should look something like this. :)

NOTE: The reason I attach the pocket piece first before the binding is that it's easier to get a neat, flat pocket this way. If you feel more confident that you can still get a neat, flat pocket and would prefer to attach the binding piece first feel free to do so :)

FRONT POCKET OPTION:

Take your pocket piece and fold over the top to create a 2cm hem. Pin, press and stitch in place.



Fold back each pocket raw edge towards the wrong side by 0.5cm. Pin and press.



NOTE: IF YOU'RE WORRIED ABOUT THE POCKET MOVING OR BEING STRETCHED WHILE SEWING IT ONTO THE DRESS YOU CAN CUT A SECOND POCKET PIECE FROM WOVEN COTTON AND STITCH THE 2 PIECES RIGHT SIDES TOGETHER. Leave the top seam open. Trim the corners, turn right way round and press. Fold the top of the pocket over, press, pin and stitch in place. Your finished double layer pocket should look a bit like this.





Place the pocket onto the bodice of the dress front and position it to where you would like it.

Pin it place and the top stitch it onto the dress front.

I re-use the pins that are already on the pocket to pin it to the bib. Just gently slide the pin back and then through the bib being careful not to lose the folding over of the pocket you just did.



NOTE: I like to sew a reinforced area at the top of the pocket a bit like a triangle.

NOTE: You might want to wait until you've made your dress before you add your front pocket. Especially if you are adding 2 pockets on the front of the skirt so you can pinpoint the placement. There isn't an exact placement on the pattern piece as people generally prefer their own placement on the front pockets. As a general rule if you are placing 2 pockets on the skirt front you can line the top of the pocket up with the midpoint of the pocket cut line on the pattern piece. If you're placing 1 pocket on the dress bodice you line up the pocket top with the armpit point.

PULLOVER STYLE (all variations):



Lay the dress front piece on top of the dress back piece with right sides together and sew down the sides and across each shoulder tab to attach the dress front to the dress back.

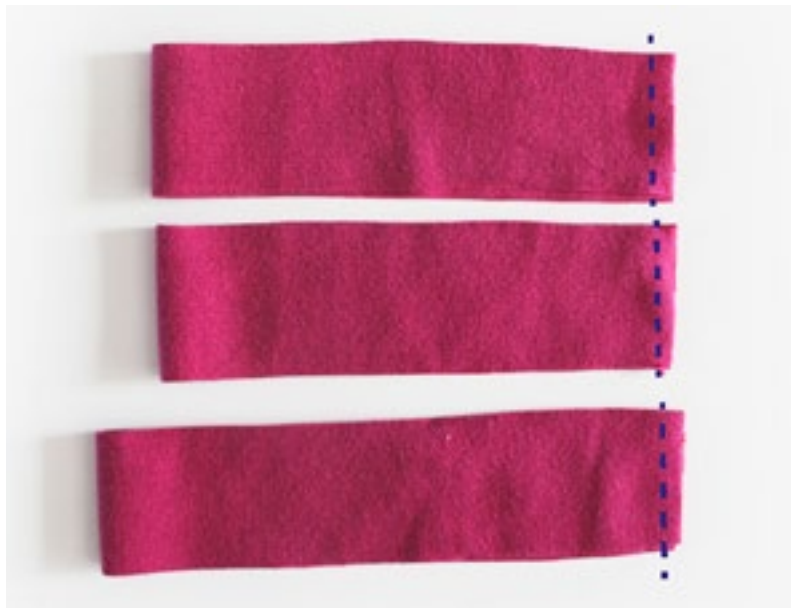


POCKETS: If you've added the side pockets make sure you catch the band ends and pocket piece edge when sewing down the dress sides. Also make sure you line up the hem lines of the front and back pieces as the pocket openings could create extra movement in the front piece and if you don't pin all the way down you could end up with a front piece that is either too long or too short for the back piece.

PULLOVER STYLE WITH BANDS:

How to attach the neck and arm trim bands or binding for the Pullover Style.

Fold the band pieces right sides together with the grain going vertical. Then stitch down the raw short edge of each side making a little tube. If you're making bands then follow the instructions that are next, if you want to create a binding finish then jump to the binding technique on page 13 after you've sewn your pieces together as below.



To make the dress with bands pin the raw edges together and place the pins at the half points, on the joining seam and then directly opposite. Do the same for the neckband and the arm bands.



With the dress wrong side out still you're going to put each band inside the neck and arm openings and line up the raw edges of the bands and dress together. You will need to stretch the band to fit as the bands are smaller than the openings. Try to stretch the band a little more at the front and back of the neckline and a little less around the shoulders.



Then stitch along that edge to secure the band to the neck and arm openings. Once you turn the dress the right way round it should look a bit like this :)



PULLOVER STYLE WITH BINDING:

Follow the first step of sewing your bands together as outlined on page 11. Once you've sewn your bands together place a pin on the half point of the band directly opposite the sewn edge. Here we're going to bind the neck hole first.



Place the binding piece onto the dress right sides together lining up the join seam on the binding piece with the back mid point of the neck hole and the pin you placed marking the half point on the front mid point. You're then going to stretch the band evenly around the neck hole opening and pin as you go along. It's similar to attaching a regular neckband except we're leaving a raw edge and not folding the band over. This is so we can fold the binding piece back to the inside of the neck hole once it's sewn on.

It should look a bit like this once the binding band has been pinned on. Now sew the band in place onto the neck hole opening. You will need to stretch the neckband as you sew. If you're using a serger you can serge this on, if using a sewing machine use a very narrow zigzag with a 0.8mm seam allowance. I wouldn't recommend a straight stitch as the opening needs to be able to stretch.





Once sewn in place the binding band should look a bit like this. Similar to a regular neck-band but with the raw edge still visible.

From the reverse fold the raw binding edge towards the sewn edge like this. We're going to make it like bias binding only it doesn't need to be on the bias because it's already stretchy :) You can always iron the binding but it's not necessary.



Then fold the binding over again towards the wrong side to enclose the seam. Pin in place and continue to fold and pin along the whole binding piece. You will need to stretch the binding as you go to get a neat finish.

Next you will top stitch all along the binding to secure it place. You can use a double needle on a sewing machine or a coverstitch. You can use a straight stitch on a sewing machine although the straight stitch won't be flexible and may be liable to breaking. Follow the same process for the arm holes and also if you will be hemming the dress using the binding strip. You can use a straight stitch to top stitch the binding hem as it doesn't need to be able to stretch as much. And so if you're doing all binding edges then you already have a finished dress :) If you're creating a different hem then jump along to the other hem styles on page 32.



PULLOVER STYLE WITH FACING OR REVERSIBLE:

The process for the bodice facing or the reversible style is the same at the start. Either cut out 2 front and 2 back dress pieces for the reversible or for the facing option cut out 1 dress front and back and 1 top half front and back.

Lay the front dress on top of the back dress piece right sides together. Do the same for the second dress (for the reversible) or the top half pieces (for the bodice facing).

Then sew down the sides of both dresses/ facing.



Turn one of the dresses or the facing right side out.

Then place the right side dress/ facing inside the wrong side out dress and line up the neck and arm edges (This pic has the tab down just to show the dress inside the other dress.)



You're now going to sew the one dress to the other (or to the facing) as shown here. Sew along the front and back necklines and also along each arm hole. LEAVE THE SHOULDER TABS OPEN.



Turn the dress the right way around and you should have something that looks a bit like this. Next we're going to join the shoulder tabs together. This is slightly tricky so if you get stuck anywhere please do ask for help in the group :)

Looking at the back of the dress and open the gap between the back inner dress or facing and the back outer dress.



Now pull the back shoulder tabs down inside through the gap between the back dress outer and inner layers. You want the tabs to be wrong side out when pulled through.



Now take the front shoulder tab and push it through into the back shoulder tab. Make sure you push the right front tab into the right back tab and same with the left, don't cross them over.

It should look a bit like this once you've pulled the front tabs inside and through the back tabs. Next we're going to line the raw edges of the tabs up nicely.



Pin the tabs together and stitch across the tab tops. I like to use a straight stitch on a sewing machine to reduce the bulk in the seam. You can use a serger but will find a bit of a bulkier finish once you turn the dress right side out.

Your stitched tabs should look a bit like this. Trim off the seam allowance and corners taking care not to snip your stitches :)



Turn the dress right side out and you should have a lovely reversible dress or a dress with a bodice lining. Jump straight to the HEM section from page 32 to finish off the dress :) You can finish the hem with the binding finish or the turned in hem.

SNAPS STYLE - FACING OR REVERSIBLE OPTION:



Lay the front facing or second dress piece on top of the dress front right sides together and pin as shown.

Pin the piece of woven stabiliser fabric onto the dress front rather than the facing.

Then do the same for the dress back and back facing pieces.

NOTE: The reason I pin the stabiliser to the front wrong side is that when you turn the tabs right side around the bulk of the seam will be on the facing side of the tab and will give neater front corners :)

If you're making the reversible dress it doesn't matter which side you pin the stabiliser.



Sew the front facing or second front dress piece to the first dress front piece as shown. Do the same for the back dress pieces or facing. Leave the top of the tabs unsewn, we'll do this on a sewing machine with a straight stitch in a bit.

TIP: When sewing the facing to the dress piece sew it from the dress side and not the facing side, this will help make sure you catch the piece of woven interfacing :)

If you're making the reversible then it doesn't matter which side you sew on :)



Stitch the tab top with a straight stitch approximately 1cm from the raw edge remembering to back stitch on each end.

Then trim the raw edge off the tab top so it will be nice and neat when you turn it right side out.



Turn the tabs the right way around, it should look something like this, do the same for the front and the back pieces.

You can stitch the tab tops with a serger but it will create a lot more bulk in the tab corners when you turn them the right way.





Lay the dress front piece on top of the back piece with the facing or second dress front piece also flipped up. Line up the raw edges down each side. You're going to sew down each side starting at the edges of the facing that's flipped up all the way down to the hemline.



POCKETS: If you've made the pockets version make sure you catch the binding ends and pocket piece edge when sewing down the dress sides. Also make sure you line up the hem lines of the front and back pieces as the pocket openings could create extra movement in the front piece and if you don't pin all the way down you could end up with a front piece that is either too long or too short for the back piece.



Tip: Make sure you line up the stitched lines on each side before sewing down the dress sides.

Once you've sewn down each side leave the dress wrong way round then flip down the facing like this. If you're making the reversible you can now skip straight to hemming the dress.



HEMMING THE FACING:



There is a 2cm hem allowance on the facing. You can pin it and hem it if you want to. It's not essential but helps it stop curling up after washing.

Make sure you don't sew the facing to the actual dress though. :)



Pin the facing inside the dress with the seams matching up. Then we're going to do a top stitch on it to keep the facing inside the dress so it doesn't keep riding up.

This is how I top stitch the facing down, you don't have to do it the same way, you can always just sew a straight stitch down along the side seam to secure the facing but I'll explain my method.



If your machine has a joint straight and zigzag stitch like mine then I have to move the feed dogs out of the way, as if you're going to sew a button on or do free motion. Then set the machine to a wide zigzag stitch and place the needle over the side seam. Then do a few sets of stitches directly over that side seam :) (Remember to put the feed dogs back up when you're done)

If your machine has a standalone zigzag setting you can set the stitch length to zero and it should achieve the same affect without having to move the feed dogs out of the way :)

OR You can do a straight stitch directly up the side seam using the stitch in the ditch method.

SNAPS STYLE - WITH BANDS:

Overlock one edge of the woven stabiliser then attach to the tab tops by overlocking the edges together. Take 1 of the SNAPS variation NECK BAND pieces and fold it wrong sides together along the length of the band.



Pin the front band to the front of the dress right sides together along the raw edges. LEAVE AT LEAST 1CM OF THE BAND OVER THE TAB EDGE. Start by pinning the two tab ends first with the overhang, then the midpoint of the band to the midpoint of the neck. You will need to stretch the band slightly to fit. You will then need to stitch along the raw edges to attach the band to the dress.



It should look like this from the wrong side.

Follow the same process for the dress sides and back and you should have something like this.



To finish the shoulder tab edges go to the **FINISHING THE SHOULDERS** on page 29 :)

SNAPS STYLE WITH BINDING:



Pin and then attach the pieces of woven stabiliser to the tab tops.



Take the dress front binding piece and pin the raw edge of the dungarees front leaving at least 1cm of binding overhanging the tab top edge. Then pin midpoint of the binding to the midpoint of the dress front. You will need to stretch the binding slightly to fit the dress front.

It should look a bit like this once stitched in place.



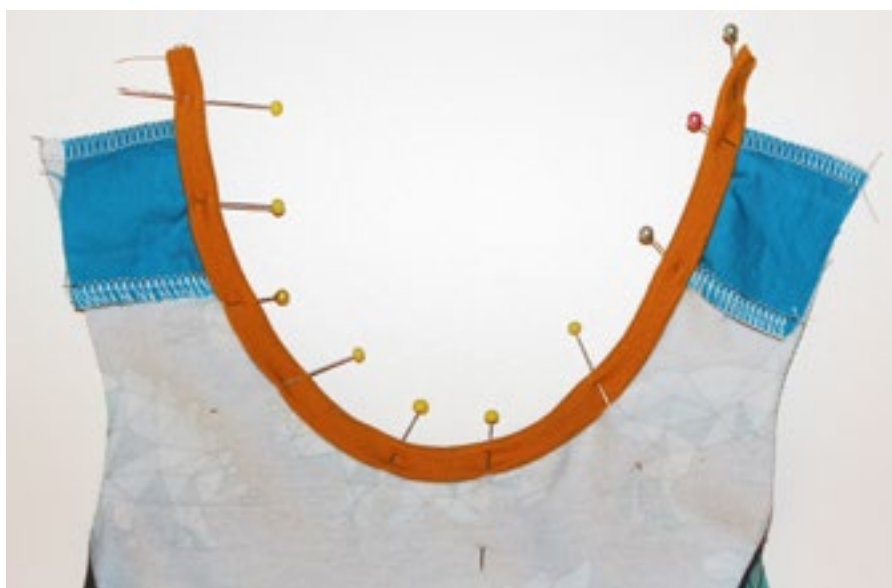


From the reverse fold the binding towards the raw edge like this. We're going to make it like bias binding only it doesn't need to be on the bias because it's already stretchy :) You can always iron the binding but it's not necessary.



Then fold the binding over again towards the wrong side to enclose the seam. Pin in place and continue to fold and pin along the whole binding piece.

It should look a bit like this when all pinned in place from the wrong side.





Next you will top stitch all along the binding to secure it place. You can use a double needle on a sewing machine or a coverstitch. You can use a straight stitch on a sewing machine although the straight stitch won't be flexible and may be liable to breaking.



It should look a bit like this when top stitched.

Then do the same process for the back binding and the sides binding.

So your binding should end up looking a bit like this but probably with shorter overhangs as I adjusted the pattern pieces since taking the pictures. :)



FINISHING THE SHOULDERS (band and binding options):

Fold the tab top over to the wrong side of the dress. You want to fold over about 1.5-2cm and then pin it in place. Those extra ends on the binding makes this bit so much easier :)

Do the same for all the tab tops.



Your pinned tab tops should look a bit like this :)

Here I use the same zigzag with the feed dogs disengaged method that I used in the facing version of securing the facing to the main dress. You can do a straight stitch across the tab top instead if you want to.



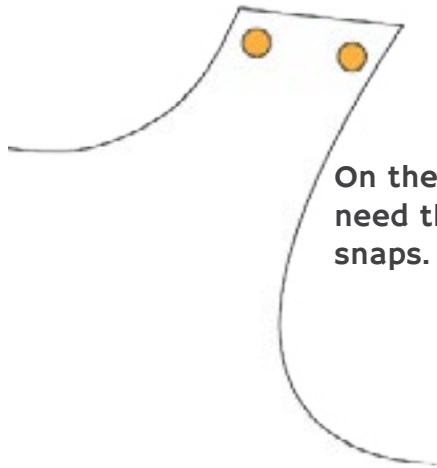
It looks like this from the front.



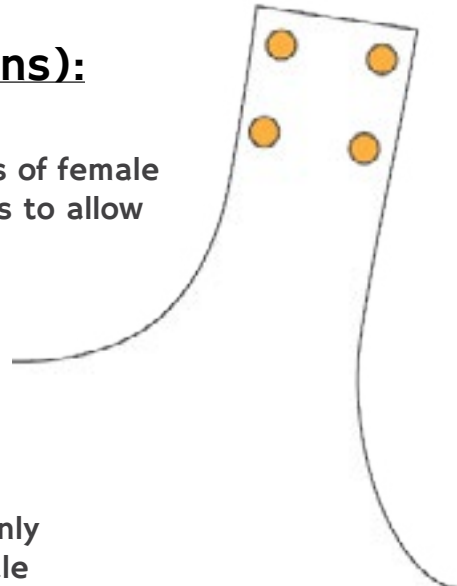
And this is the back view. Now trim off the binding pieces that were hanging over and you should be left with something that looks a bit like this :)

ADDING THE TAB SNAPS (all options):

There should be enough space to fit two rows of female snaps on the front tabs of 1-2cm apart. This is to allow for height adjustment.

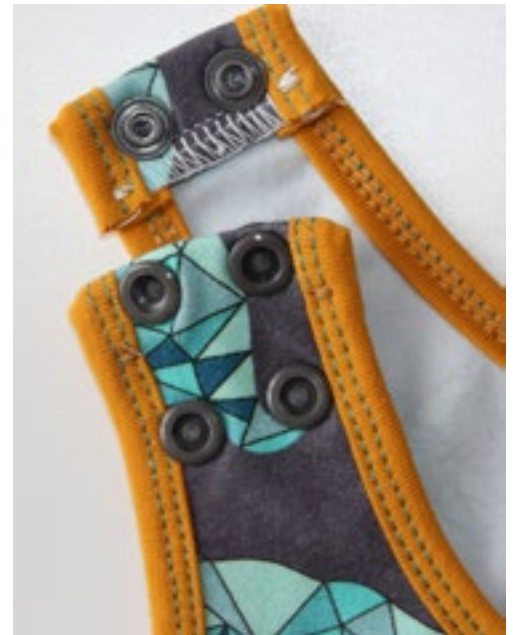


On the back tabs you only need the one row of male snaps.



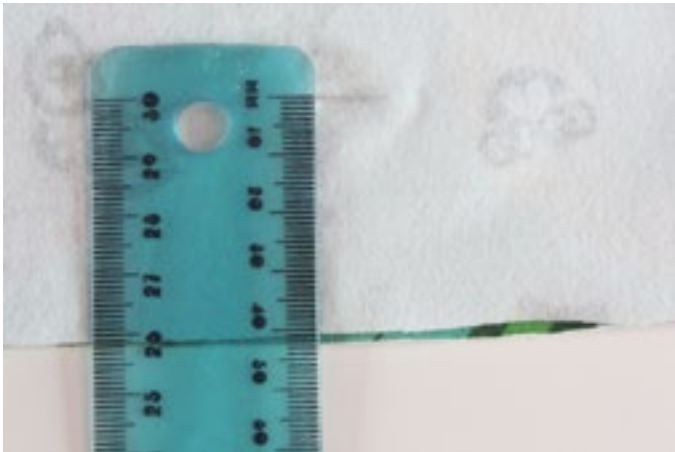
So your tab snaps should look a bit like this :)

You will probably find the binding version snaps need to be closer together as the binding tends to add extra bulk to the tab.



HEMS

Regular foldover hem:



Fold up the bottom edge of the dress to the wrong side by 2cm and pin. You can draw a small marking that is 4cm from the raw edge and keep drawing the 4cm markings all the way around the dress edge.

Fold the raw edge back up towards the wrong side, line it up to the marking and pin in place.



Continue to pin the entire hem and press. You don't have to press but it does help keep the fabric in place when stitching.



Stitch the hem using any stitch you like, straight, zigzag or coverstitch.

Lettuce/ rolled hem on a serger:

Make sure you've cut out your dress piece on the rolled hem line from the pattern piece.

To create a lettuce hem on your serger you will need to remove the left hand needle and reduce the stitch width. Some machines have a rolled hem setting on the stitch width and length dials. You should always refer to your machine's setting to achieve the perfect rolled hem. On my machine I will set the right needle tension to 5, the upper looper tension to 5 and the lower looper tension to 8 and stitch length to the lowest setting. I then adjust the differential feed to a number less than 1 to get it to stretch the fabric slightly while it pulls it through.

To create a rolled hem with very little waviness keep adjusting your differential feed until the fabric comes out relatively flat. To create the lettuce effect with extra waviness keep adjusting the differential feed and putting a gentle stretch on the fabric as you feed it into the machine until you achieve the level of waviness you're looking for.

Each machine is slightly different so it's always best to practice on scrap pieces until you get the settings just right. Then make a note of the settings so you don't have to go through the whole process again in the future.



Binding Hem:

To finish your dress with the binding hem make sure to cut the dress on the rolled hem line for whichever height option you prefer.



Take your hem binding piece (NOTE: THE HEM BINDING PIECE IS THE ONLY BINDING PIECE THAT NEEDS TO BE PLACED ON THE FOLD WHEN CUTTING) and fold it right sides together then sew the two short ends together to make a band. With the dress right side out line up the side seam of the dress with the seam of the binding piece and place a pin on the mid point of the band to line up with the other side seam of the dress.

Pin the raw edges of the band to the raw edge of the dress right sides together. You will need to stretch the band slightly to fit the dress as you go. Make sure the band is stretched evenly all the way around. Then sew the band to the dress either using a serger or a long stitch length straight stitch or very narrow zigzag with a 0.8mm seam allowance to allow space for turning the binding.

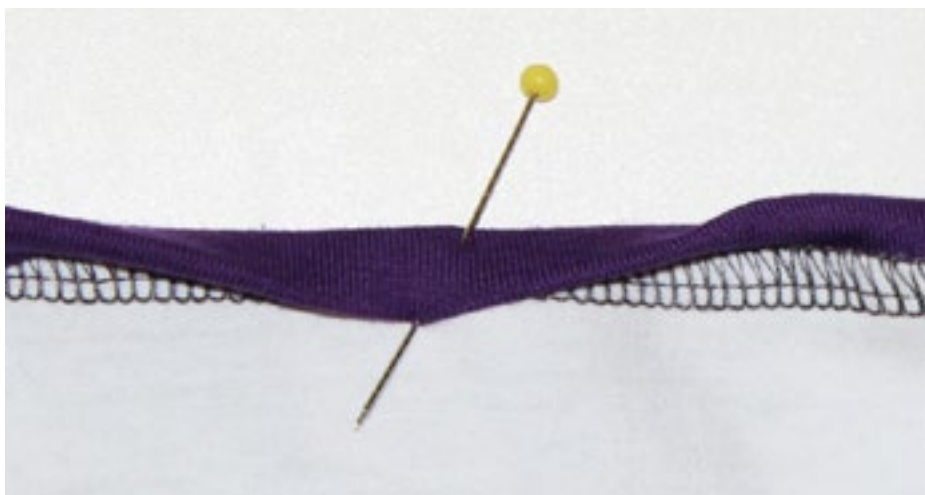


The sewn on binding piece should look a bit like this. Like a band but with the raw edge still showing.



Looking at the binding from the wrong side, fold the binding raw edge back towards the seam.

Then fold the binding over again to enclose the seam and pin in place. It's like the same process as bias binding except it's not on the bias :)



Continue to fold the binding and pin it over the seam to enclose it stretching slightly as you go around. Now top stitch the binding in place using a double needle or long stitch length straight stitch on the sewing machine or a coverstitch machine.



Your finished hem with binding should look a bit like this :)

Reversible dress fold in hem:



With the reversible dress right way round place a mark 4cm from the raw edge on the wrong side. Continue to place 4cm markers along the entire dress edge for both the outer and inner dress.

Fold the dress edge towards the wrong side up to the 4cm marking and pin in place. Continue to do this all the way around both the inner and outer dresses.



Once you've done this for the inner and outer dresses you should have something that looks a bit like this.

Now pin the inner dress to the other dress all the way around the dress edge. This will close the gap between the inner and outer dress and join them together to create the fully reversible dress with no visible seams.

Next stitch along the dress edge to secure the two edges together. If you're using a coverstitch you can use a single needle chain stitch so it looks like a single line stitch from both sides.



You can also use a regular straight stitch with a long stitch length on a sewing machine for the hem. You will then have a lovely reversible dress with no visible seams and no awkward trying to turn it and hand sew up the turning hole :)



