



WINTER WARMERS

Hat + Snood

A fitted beanie hat sewing pattern with 'ears' for ages Newborn to Adult and a snood sewing pattern from 6 months to Adult



Description

This pattern is for : A fitted beanie style hat with selection of 'ears' and a snood which is just a fancy way of saying neckwarmer or small scarf thingy.

FABRIC OPTIONS:

The pattern work best with fabric of at least 50% stretch. The snood needs to stretch to fit over the head and the hat and band, although not tight, need to have stretch to not compress the head. Fabric with lycra content is recommended i.e cotton lycra; stretch fleece, french terry and rib will also work provided they have the right amount of stretch in the width ways direction. Ears can be made in any fabric, knitted or woven. You can use 2 way or 4 way stretch :))

SEAM ALLOWANCE:

There is a 7-8mm (0.25 inch) seam allowance included in the pattern. This means you can serge along the edge of the fabric without trimming any fabric off with the blade or if you're using a sewing machine you can stitch 7-8mm from the fabric edge.

PREWASH:

Remember to prewash all fabrics to allow them to preshrink and to remove any factory residues.

NOTIONS:

If using a sewing machine remember to use ballpoint or stretch needles and polyester thread. You don't have to use a stretch stitch on a sewing machine but it will probably help stop popped seams if you do :))

GET IN TOUCH: If you're stuck at any point, feel free to get in touch :))

tanya@sparkleandroar.com

and join the facebook group to share pics and discuss patterny things

<https://www.facebook.com/groups/sparkleandroarpatterns/>

LEGAL STUFF: I can't really stop anyone from copying or distributing this pattern but I assume that you'll be cool and follow the rules and stuff. I'll list the legal things anyway just for info :) Please don't copy or share the pattern without prior agreement. If you are going to make items to sell with the pattern it would be awesome if you referenced the pattern but I understand that doesn't always happen so I'm not going to get hung up on that. I don't have the money to sue you if you decide to open a massive sweatshop and produce millions of items using my pattern but again I'm kind of trusting everyone to just be a nice person and hoping you won't do that.

IT APPEARS EVEN WHEN YOU'RE NICE AND HOPE PEOPLE WON'T COPY, THEY STILL DO :(IF YOU'RE THE COPIER.... SHAME.....SHAME ON YOU, I HOPE YOU PUT SALT IN YOUR COFFEE INSTEAD OF SUGAR BY ACCIDENT; THAT WILL GIVE YOU JUST THE TINIEST TASTE OF HOW IT FEELS TO HAVE YOUR HARD WORK STOLEN....BAD, IT FEELS BAD :(IF YOU'RE NOT THE COPIER THEN PLEASE ENJOY THIS PATTERN, HAVE A LOVELY DAY AND MAY YOUR COFFEE BE FOREVER SALT FREE :D

SIZE GUIDE:

SIZE	Head Circumference	
	cm	inches
NB	38	15
0-3M	41	16.1
3-6M	44	17.3
6-12M	47	18.5
1-4Y	50	19.7
4-8Y	53	20.9
8-16Y	56	22
Teen+	59	23.2

FABRIC REQUIREMENTS:

Calculated on fabric of 150cm width

SIZE in cm	HAT & Band	SNOOD x2 (front & back)	SNOOD Self-Lining
NB	15		
0-3M	15		
3-6M	20		
6-12M	20	25	50
1-4Y	20	25	50
4-8Y	25	30	60
8-16Y	25	30	60
Teen+	30	35	70

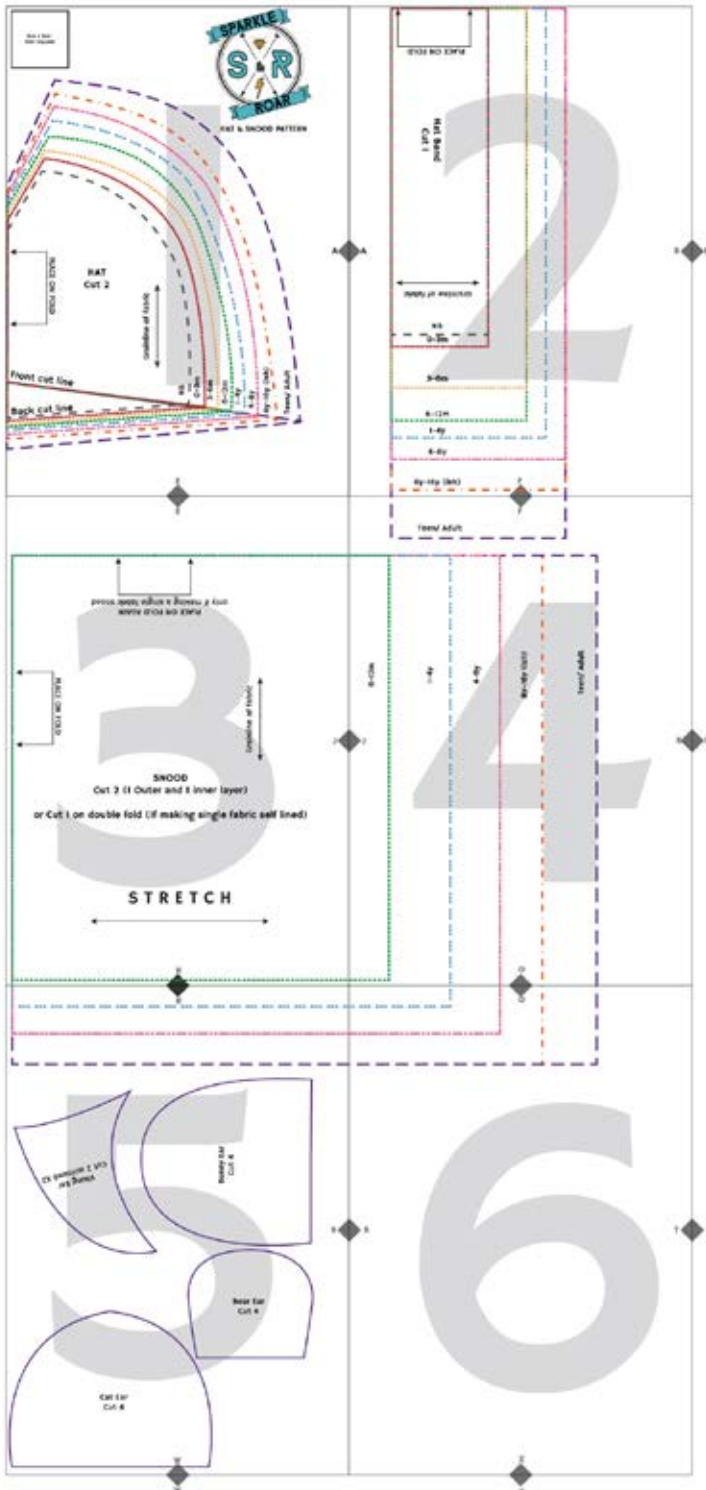
REMEMBER THE HEAD CIRCUMFERENCE IS A GUIDE BUT AS THE MATERIAL IS VERY STRETCHY IT WILL MOST LIKELY STILL FIT FOR QUITE SOME TIME ONCE THE HEAD IS PASSED THE MAX MEASUREMENT FOR THAT AGE ON THE SIZE GUIDE. THE 8-16Y HAT SHOULD ACTUALLY FIT MOST ADULTS TOO :) FOR THE SNOOD, IF YOU ARE AND ADULT THEN YOU MIGHT WANT THE TEEN+ SIZE TO GIVE YOU A BIT MORE ROOM WHEN PULLING IT OVER YOUR HEAD.

HOW TO PRINT THE PATTERN:

THIS IS SUPER IMPORTANT: Print all pattern pieces at 100% or Actual Size making sure that no scaling has been set. The pattern is designed to be printed on A4 paper in portrait format.

In Acrobat Reader you can click on the layers option and choose which layers you want to view and print. Leave them all checked to print all or uncheck the sizes you don't want to print.

The image shows a screenshot of the Adobe Acrobat Reader interface. On the left, the 'Pages to Print' panel is open, showing 'All' pages selected. Below it, the 'Page Sizing & Handling' panel is open, with 'Actual size' selected under the 'Size' options. A red arrow points to this selection. In the center, the 'Comments & Forms' panel shows the document dimensions as 8.25 x 11.69 inches. On the right, the 'Layers' panel is open, showing a list of layers: 'Tiny', '0-6m', '6-12m', '1-2y', '2-3y', '3-4y', and '4-5y'. Red circles highlight the '3-4y' layer, with a red arrow pointing to it and the text 'Click to view or to turn off layer'. Another red arrow points to the 'Layers' panel header with the text 'Click to view layers'.



ARRANGING:

Arrange the printed pages as shown on this diagram then stick them together making sure you line up the lettered squares on each page. You can then cut your pattern pieces out.

IMPORTANT:

ALWAYS MEASURE THE TEST SQUARE TO MAKE SURE YOUR PATTERN HAS PRINTED AT THE CORRECT SCALE

Sidenote: Measuring tapes often give strange measurements, best use a ruler :D

CUTTING YOUR PATTERN PIECES:

Hat and Snood pattern pieces layout.

HAT: Print pages 1 and 2 (and 4 for the teen/ adult size)

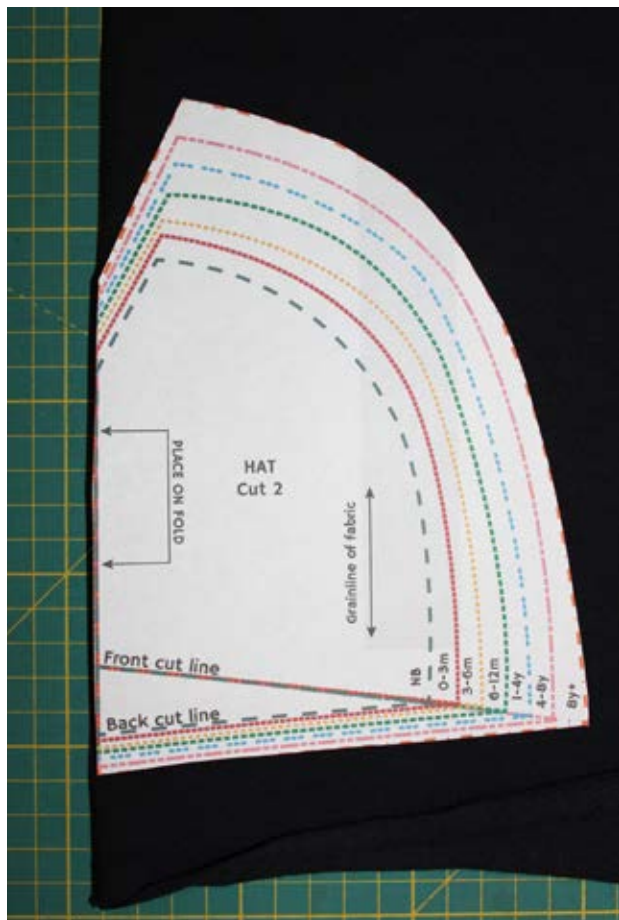
EARS: Print page 5

SNOOD Size 6-12m: Print Pages 3 and 4

SNOOD Sizes 12m+: Print Pages 3, 4, 5 and 6

Construction

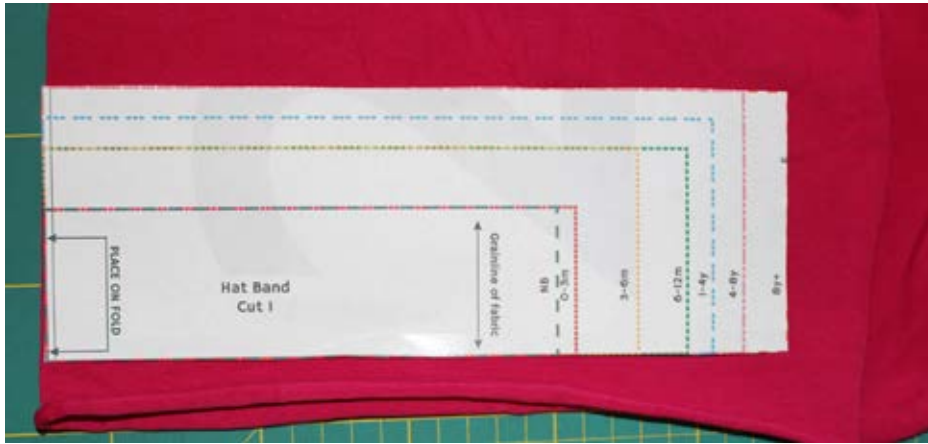
HAT:



Place your hat pattern piece on the fabric fold like this to cut out. Cut out along the Back Cut Line first for the back hat piece then you can fold the pattern piece up to the Front Cut Line and cut your front fabric piece out. The back and front hat pieces are different.

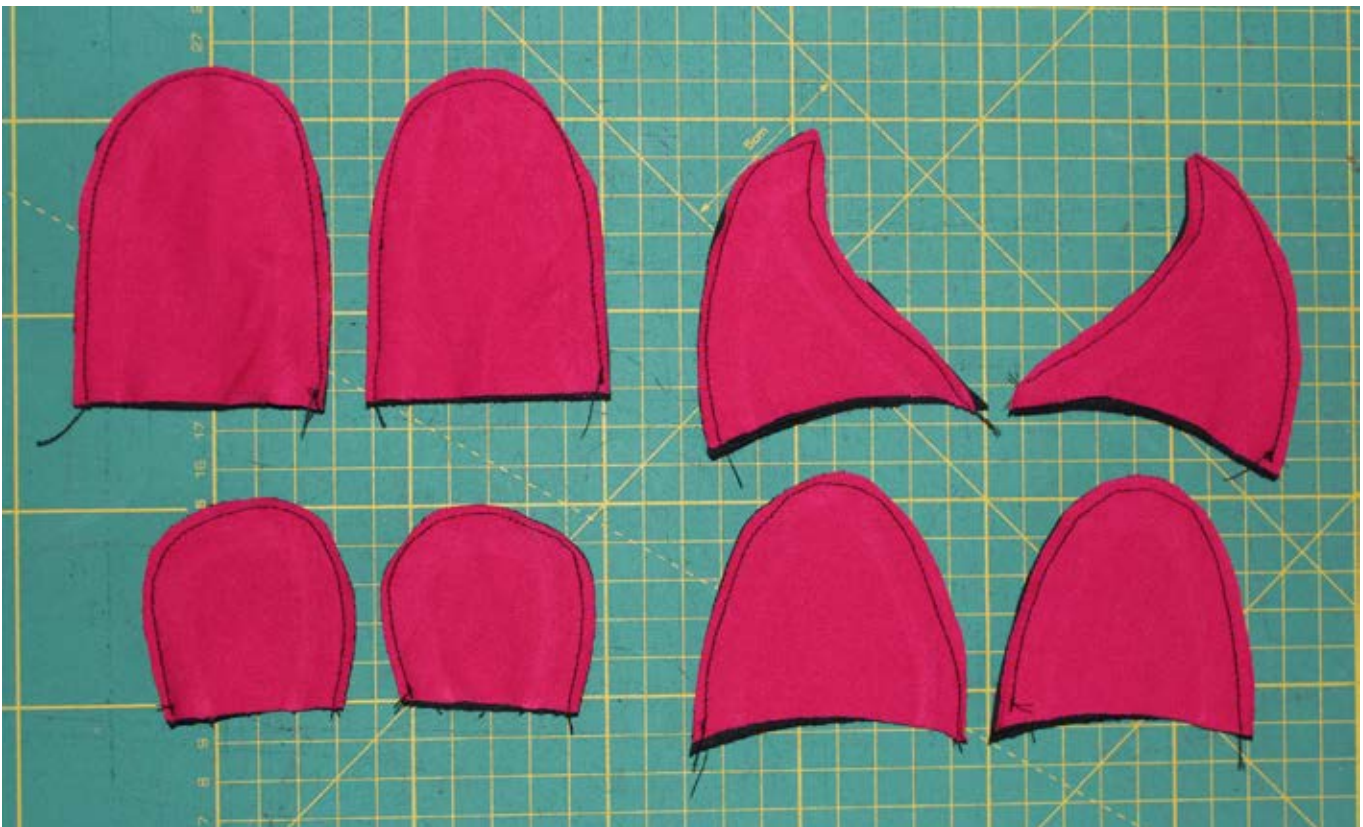
So you should have two hat pieces cut out like this. The front and the back. These pieces are still folded.





Now cut out your hat band piece . Place the pattern piece onto the folded fabric like this.

If you are making 'ears' for the hat cut out your pattern pieces for the ears you would like. All the ears are symmetrical except for the Viking Horns which need to be cut out mirrored. Then stitch the front and back of each ear wrong sides together and trim off the seam allowance, you should end up with a pair of ears that look a bit like this. If you are using jersey fabric and feel that it isn't stable enough for ears you can always stitch or iron on some interfacing or use a piece of woven cotton in between the jersey layers.



Then turn the ears right side out and press with an iron, this helps them keep their shape.

The bunny ears need to be folded and pinned as shown on the left below. The cat ears need to be folded and pinned as shown on the right. You can also fold the cat ears with both sides in like the bunny ears and it will give you more of a pony/ unicorn ear :)



Place the back of the ears onto the RIGHT SIDE of the hat back piece as shown. The location of the placement will determine how high the ears sit on the hat once it's finished. The bunny ears will need to sit higher up but the Viking Horns will probably need to sit lower down the sides of the hat. Keep in mind that we are also going to sew up the V notch in the hat so that will actually move the ears higher up onto the hat. So basically where you place the ears before sewing up isn't where they will end up, they'll move further up after the hat is finished.



Place the hat front piece on top of the hat back piece **RIGHT SIDES TOGETHER**. If you didn't make ears you will do the same thing but without having pinned the ears there first. Then stitch the front and back together where the dotted lines indicate.



Now take the hat and place it so the side seams are in the middle and together. Then pin along the where the V notches were to close the gap. Try and line up the seams on the top of the hat when pinning. Then stitch closed as shown.





Fold your hat band wrong sides together and stitch the shorter raw ends together to create a tube.

(I realise this band isn't the pink band in the hat pictures, I forgot to take pictures of this step when making the hat so have had to reuse pics from another pattern.... woops. Just pretend this is the pink hat band.)

Fold the raw ends wrong sides together along the long edges and place 4 pins at quarter points on the band. You can then line these up with the back, front and sides points of the hat.



Place the band inside your hat, right sides together, while the hat is still inside out. Line up the raw edges of the band with the raw edges of the hat.

Line up your quarter point pins on the band with the front, back and side points of the hat then stretch the band slightly to fit and place further pins so that the band is stretched evenly.

Serge or stitch the band onto the hat along the raw edges. Stretch the band to fit as you sew but try not to stretch the hat..

Turn the hat right side out and it should look a bit like this. I suspect the cat ears are a little high on mine, but would be perfect placement for the bunny and bear ears



SNOOD:



Place the Snood pattern piece onto the fabric fold as shown.

If you are making the inner and outer layers out of different fabric you will need to cut two pieces like this, one for the inside piece and one for the outside piece. I mean it's also reversible so technically either piece can be the inside or outside.

SUPER IMPORTANT STUFF FOR THE ONE PIECE SNOOD or aka Self Lined Snood

If you are going to make the Snood out of one piece of fabric so the inner and outer layers are the same fabric you will need to place the pattern piece on a **DOUBLE FOLD** of fabric like shown in the picture. If you have a 4 way stretch fabric it doesn't matter which fold you place the pattern piece on **BUT** if you are using a 2 way stretch make sure the direction of stretch follows the markings on the pattern piece. (I've added this on in **BOLD** Lettering to your pattern)





Place the Snood pieces right sides together and stitch along the long edges as shown. If you are making the self line Snood you will only have one long edge to stitch together :)



Turn the Snood right side out and you should have a tube. Then take the short raw edges and bring them together and pin along one edge **RIGHT SIDES TOGETHER**. We are going to sew these short sides together and as we sew the Snood will start turning itself inside out. This is normal. We want to leave about a 5cm gap so we can turn the Snood right side out again so be careful not to stitch up the sides completely closed.



You can then turn your Snood right side out again through the gap that you left and you should have something that looks a bit like this.

I'm afraid you will have to do a little hand stitching to close the gap but it only takes a couple of minutes :)

Or you could do a quick straight stitch to close it on the sewing machine if you don't mind those few stitches showing or if you don't want the snood to be reversible.

Here is the finished Snood :D
yay we did it !!

