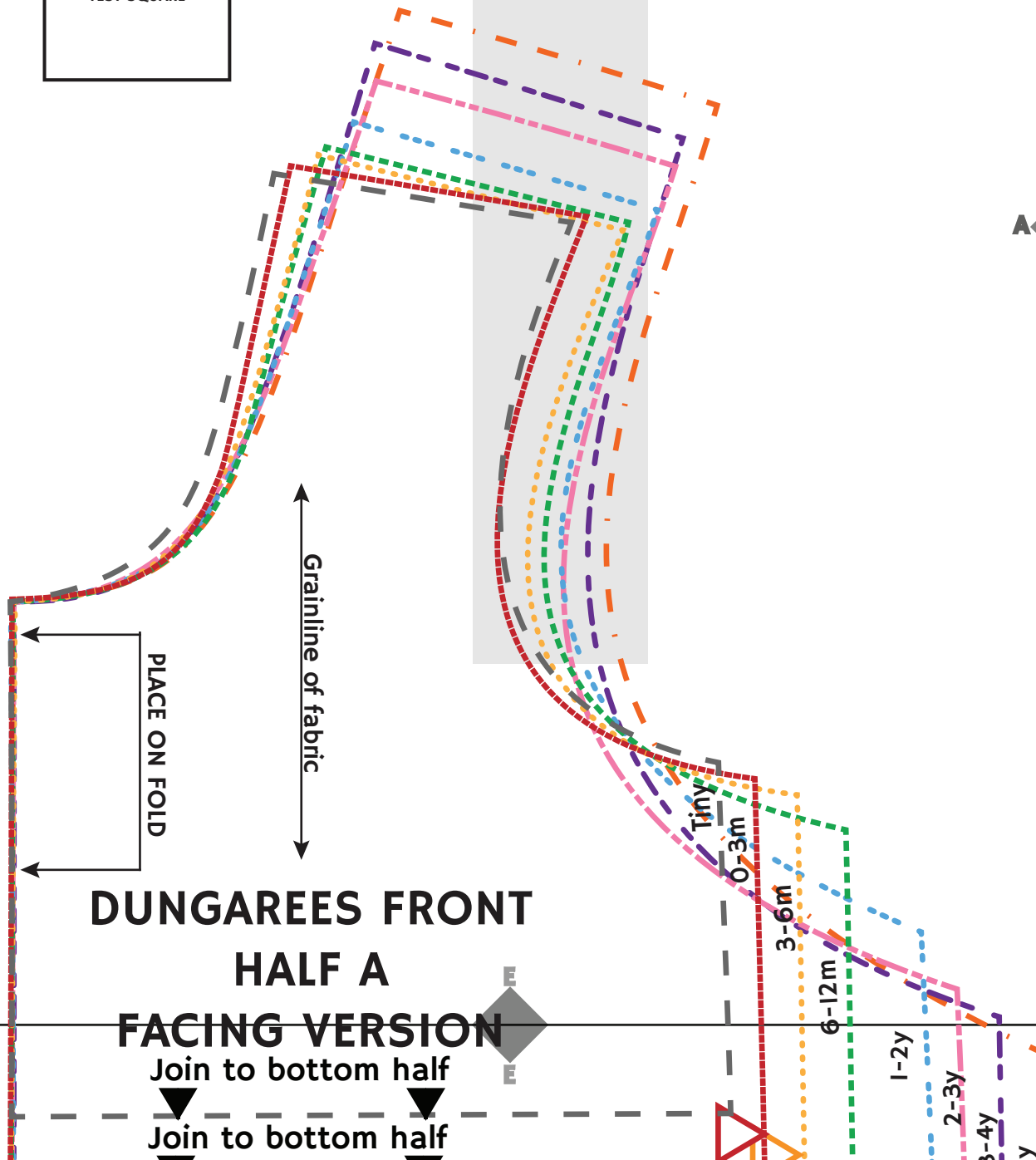
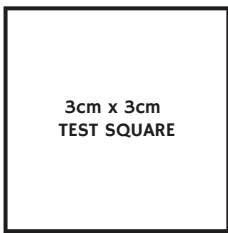




SIZE KEY

---	Tiny - NB
----	0-3M
.....	3-6M
-----	6-12M
-----	1-2Y
-----	2-3Y
-----	3-4Y
-----	4-5Y

DUNGAREES PATTERN



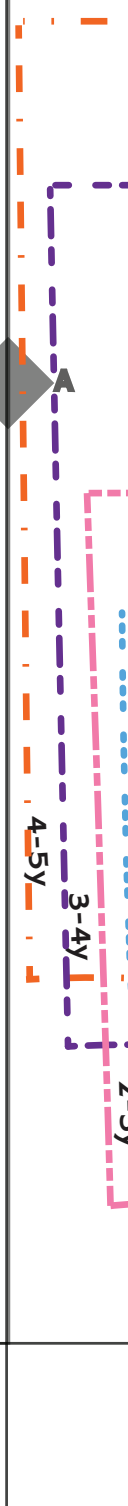
**DUNGAREES FRONT
HALF A**

FACING VERSION

Join to bottom half

Join to bottom half

Front
Front
Waist

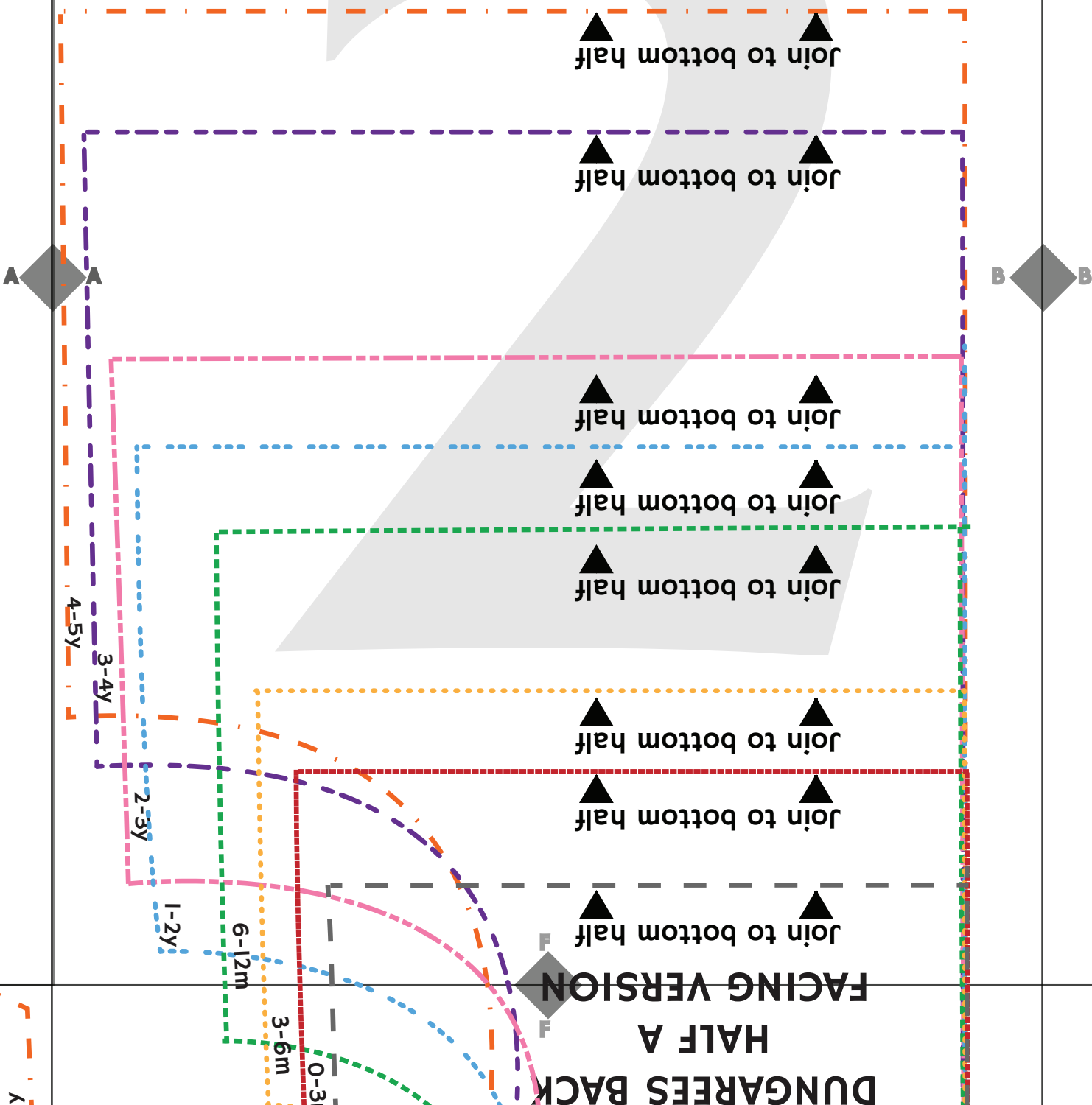


Front A 1-5y
Front A Tiny-12m
WOVEN STABILISER
PIECE CUT 2

Back A all sizes
WOVEN STABILISER
PIECE CUT 2

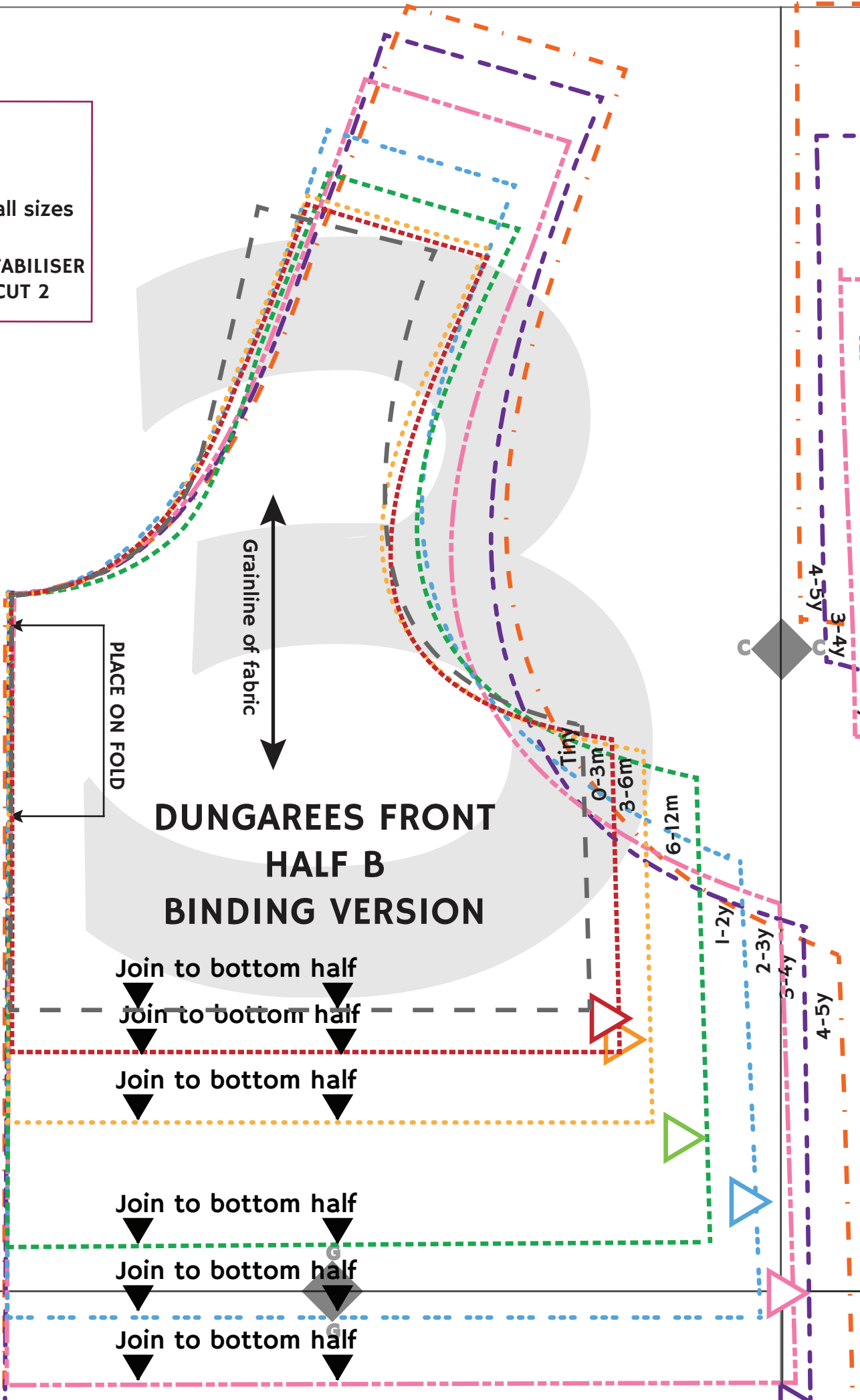
Front B 3-5y
Front B Tiny-2y
WOVEN STABILISER
PIECE CUT 2

Back
WOVEN
PIE



ER

Back B all sizes
WOVEN STABILISER
PIECE CUT 2



DUNGAREES FRONT HALF B BINDING VERSION

- Join to bottom half
- Join to bottom half
- Join to bottom half
- Join to bottom half
- Join to bottom half

4-5y
3-4y
4-5y
3-4y
2-3y
1-2y
6-12m
3-6m
0-3m
Tiny

DUNGAREES BACK HALF B BINDING VERSION

Join to bottom half

Join to bottom half

Join to bottom half

Join to bottom half

Join to bottom half

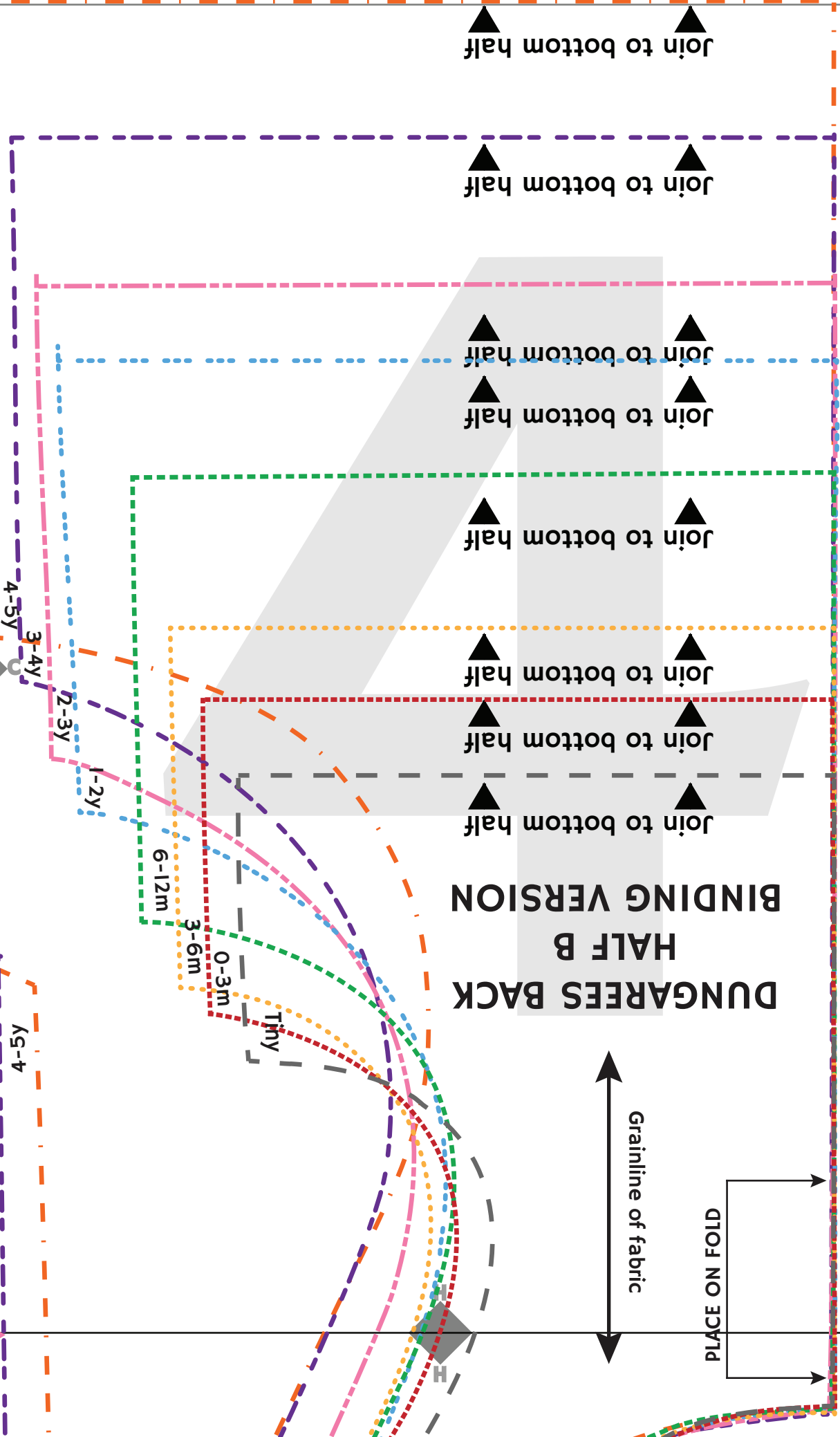
Join to bottom half

Join to bottom half

Join to bottom half

Grainline of fabric

PLACE ON FOLD



4-5y

3-4y

2-3y

1-2y

6-12m

3-6m

0-3m

Tmy

K2-1

K2-2

4y

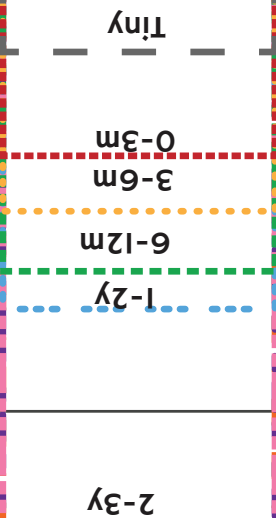
5-4

5-5y

3-4y

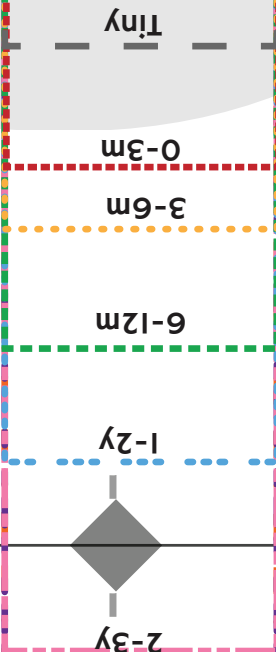
Grainline of fabric

DUNGAREE BACK BINDING CUT 1



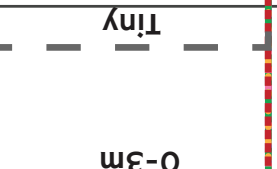
Grainline of fabric

DUNGAREE FRONT BINDING CUT 1



Grainline of fabric

DUNGAREE SIDES BINDING CUT 2



DUNGAREES FRONT

HALF A

FACING VERSION

Join to bottom half

Join to bottom half

Join to bottom half

Join to bottom half

Join to bottom half

Join to bottom half

Join to bottom half

Join to bottom half

Join to top half



3-6m

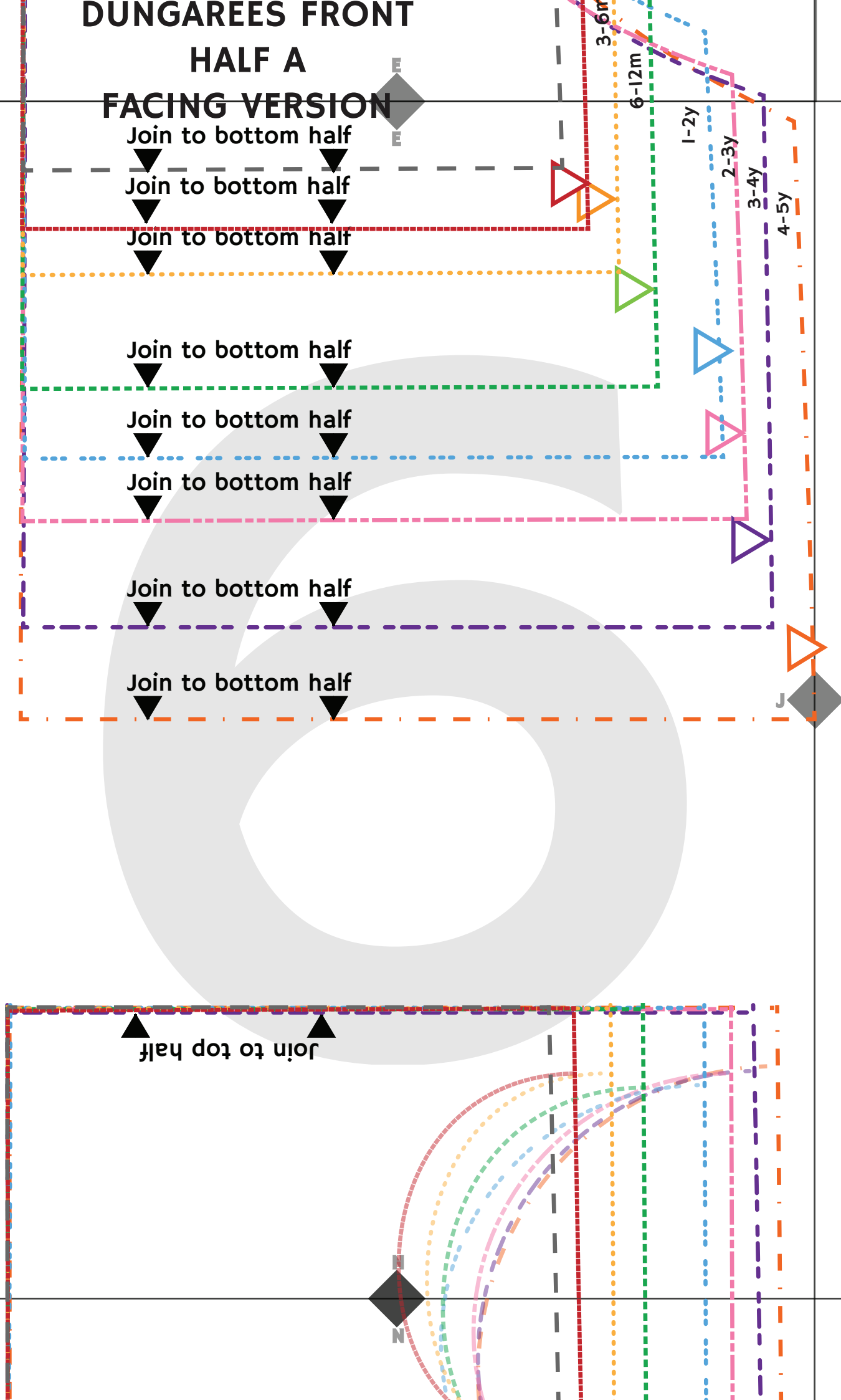
6-12m

1-2y

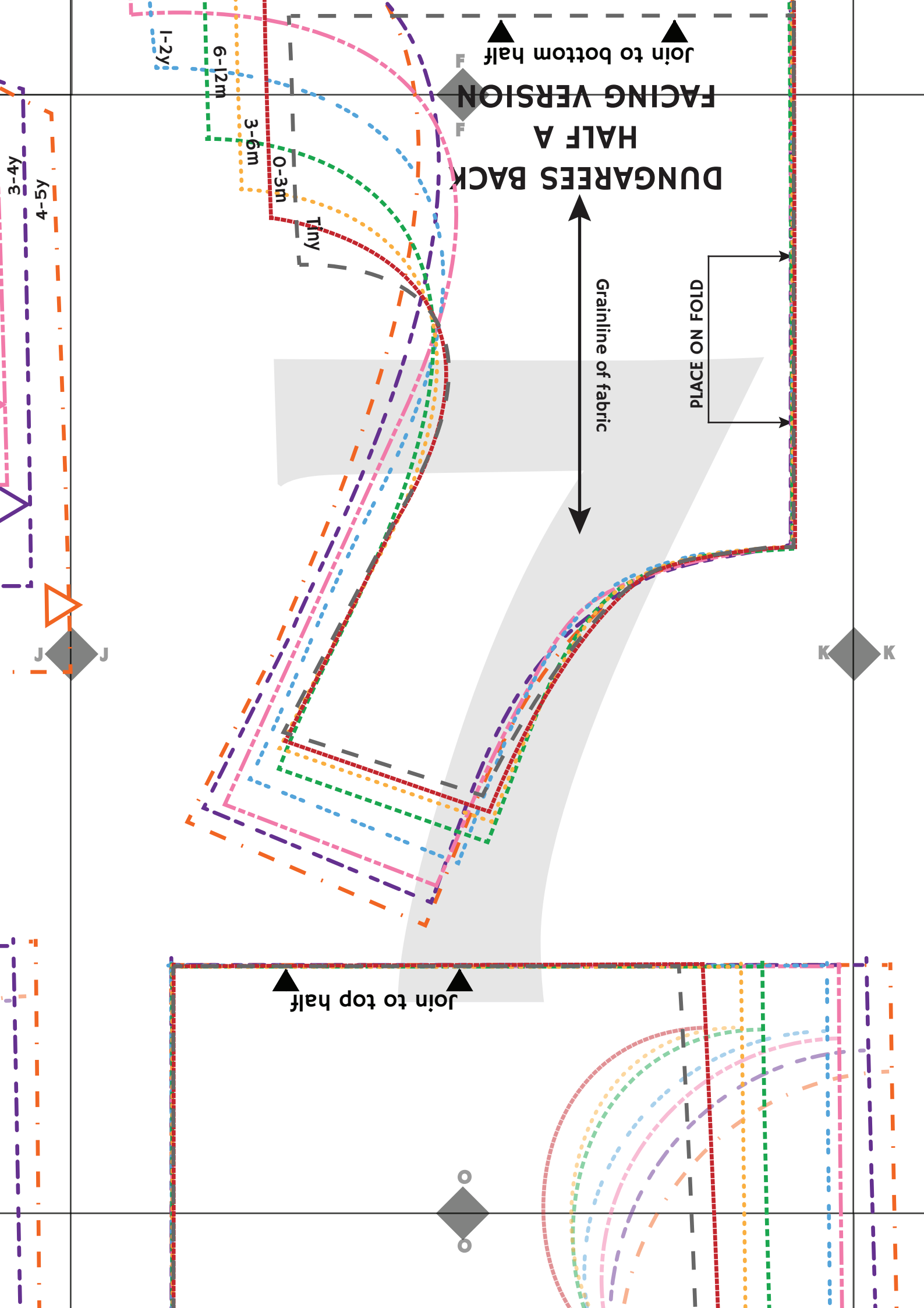
2-3y

3-4y

4-5y



DUNGAREES BACK HALF A FACING VERSION



Join to bottom half

Join to bottom half

Join to bottom half

Join to bottom half

Join to bottom half

top

I-5Y
O-12M
Tiny

GUSSET CUT I

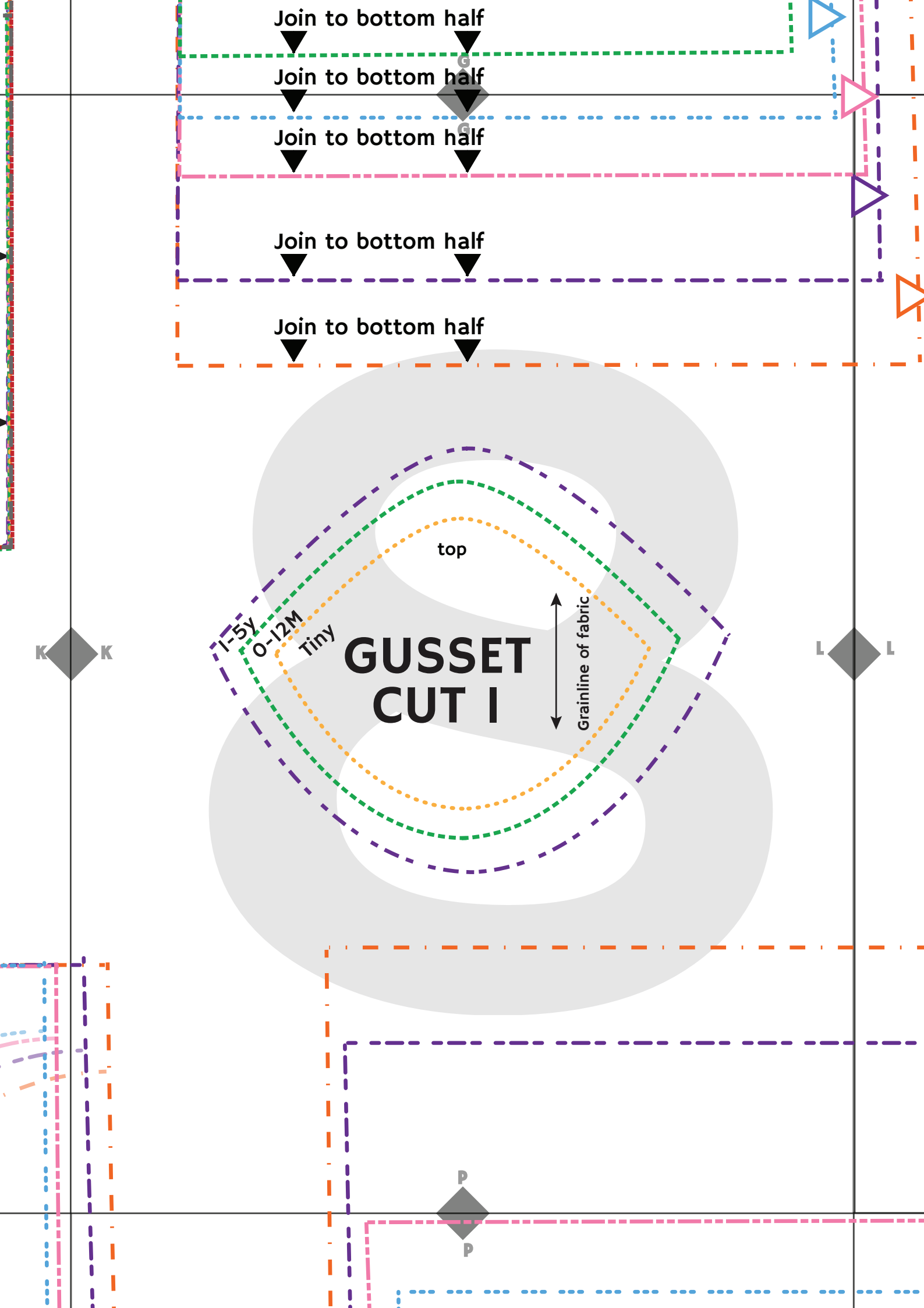
Grainline of fabric

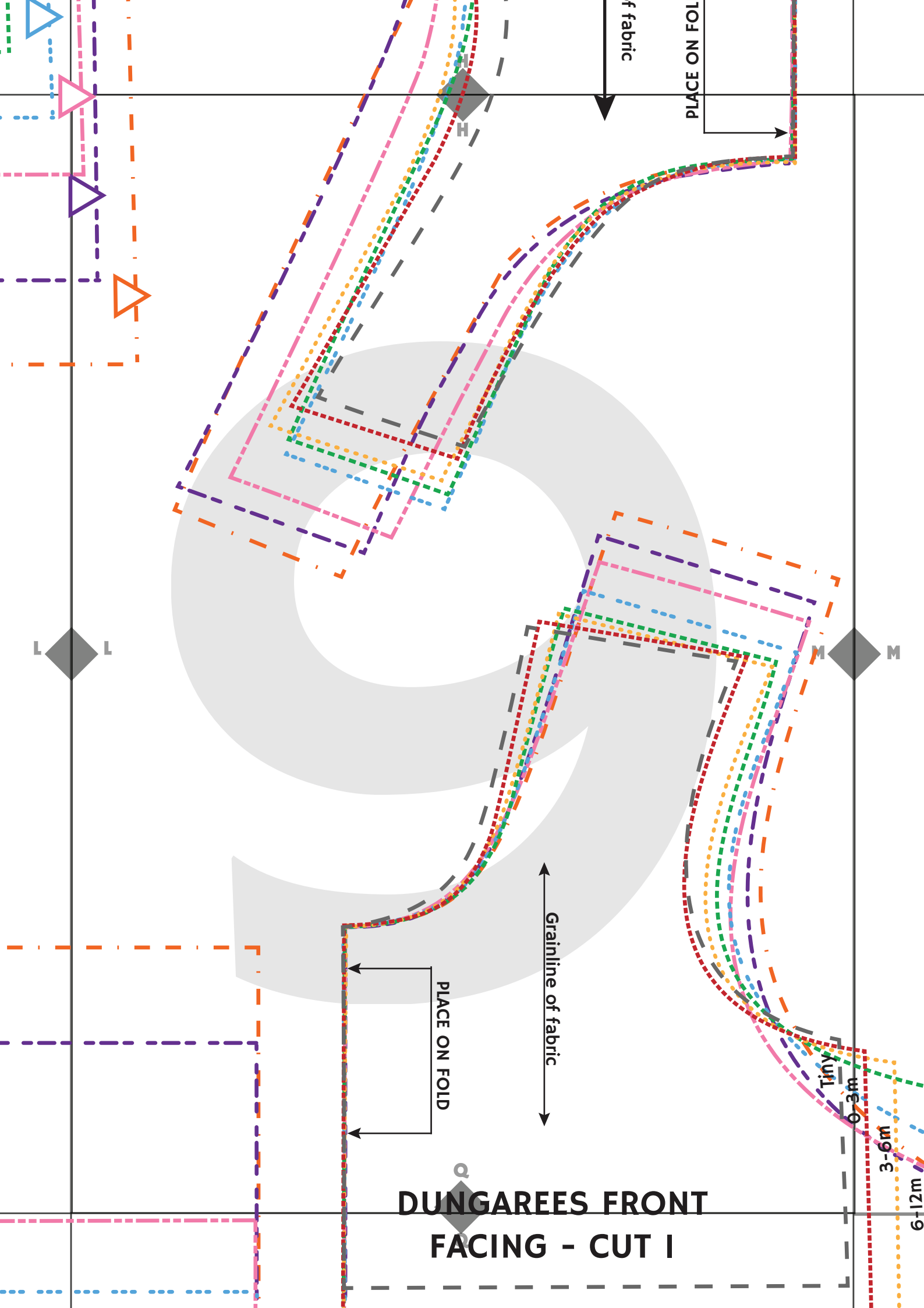
K K

L L

P

P





f fabric

PLACE ON FOLD

PLACE ON FOLD

Grainline of fabric

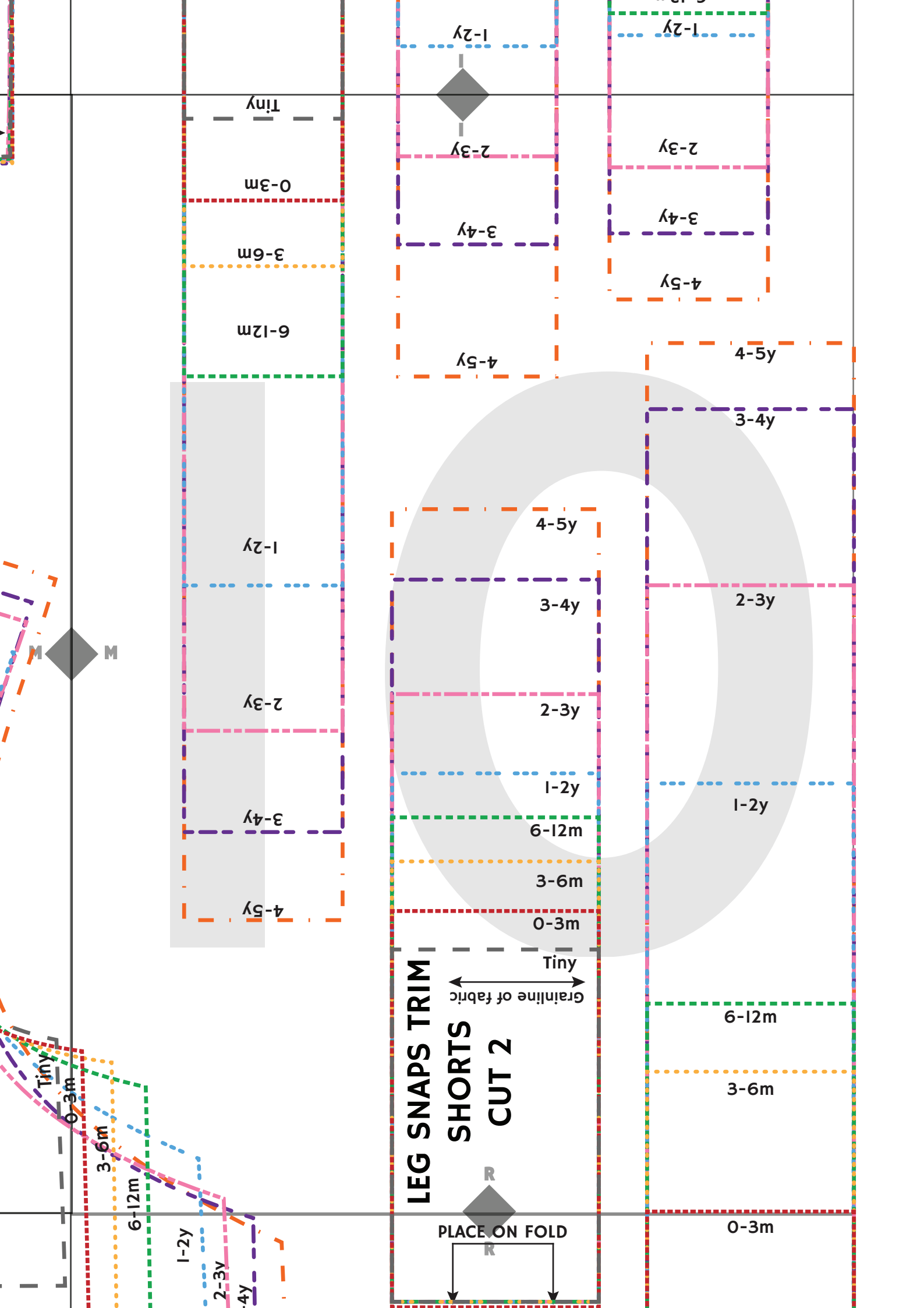
Tiny

0-3m

3-6m

6-12m

DUNGAREES FRONT FACING - CUT I



**LEG SNAPS TRIM
SHORTS
CUT 2**

PLACE ON FOLD

Grainline of fabric

Tiny

Tiny

0-3m

3-6m

6-12m

1-2y

2-3y

3-4y

4-5y

2-3y

3-4y

4-5y

2-3y

3-4y

4-5y

4-5y

3-4y

2-3y

4-5y

3-4y

2-3y

1-2y

6-12m

3-6m

0-3m

1-2y

6-12m

3-6m

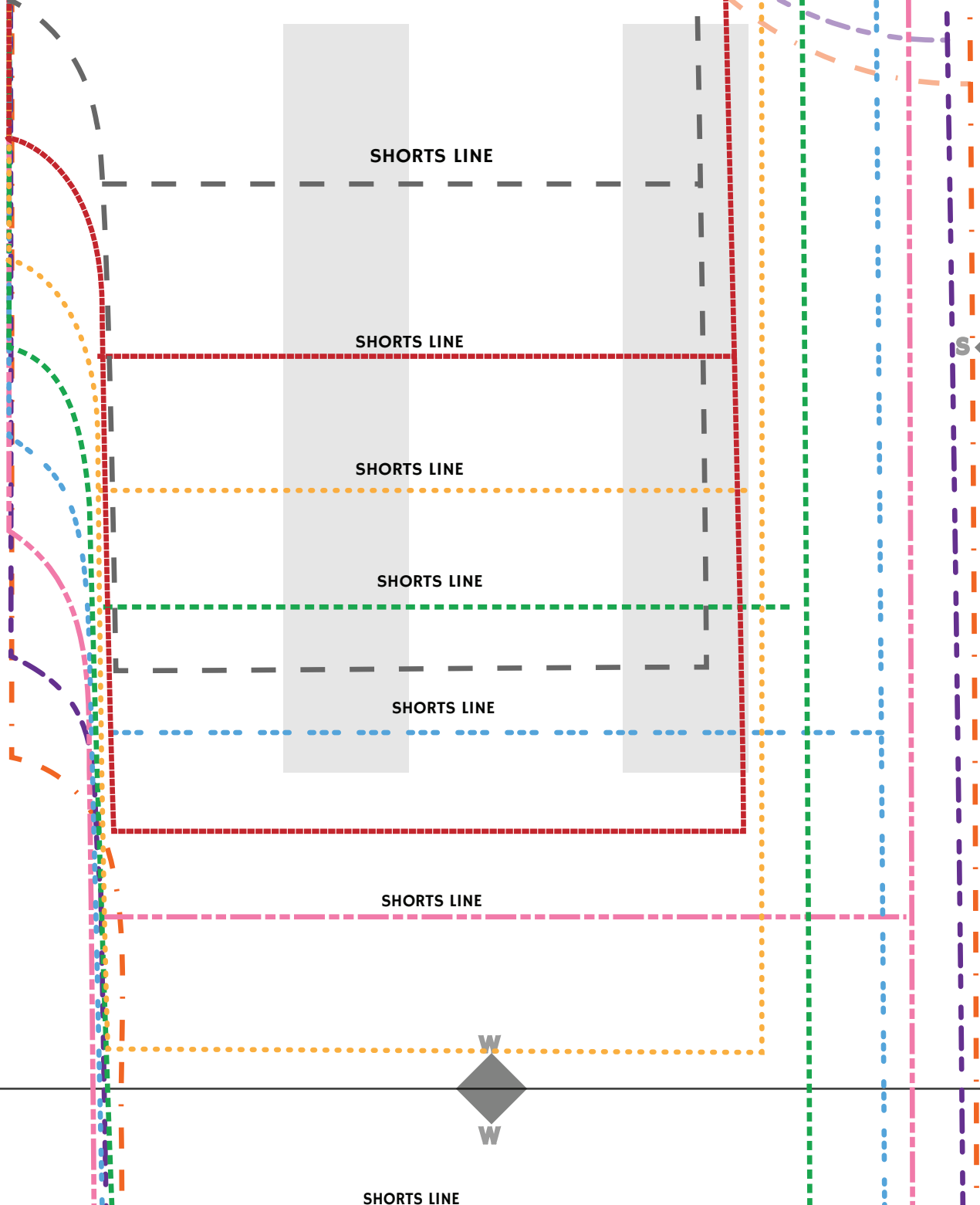
0-3m

M

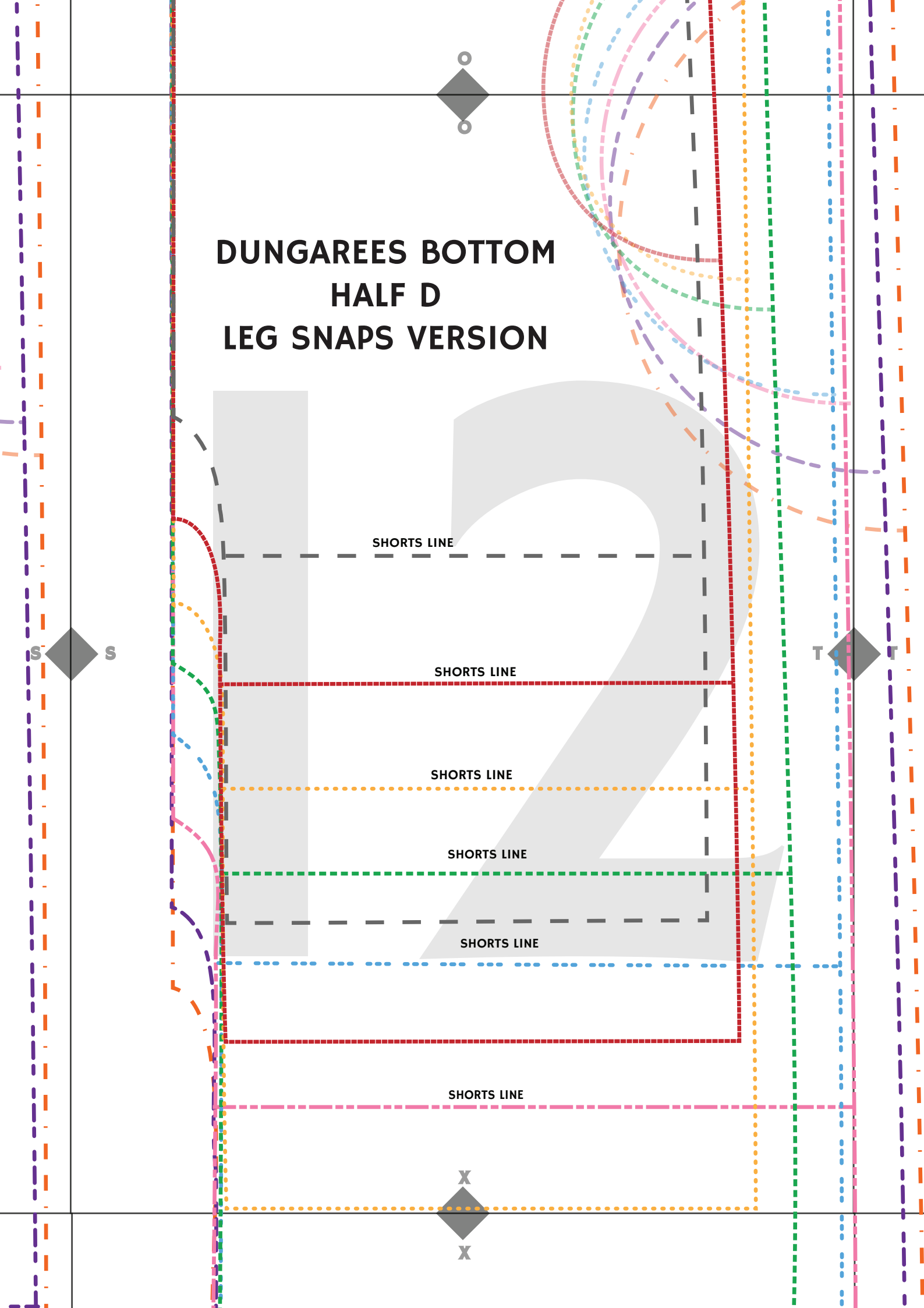
R

R

DUNGAREES BOTTOM HALF C REGULAR LEG VERSION



DUNGAREES BOTTOM HALF D LEG SNAPS VERSION



SHORTS LINE

SHORTS LINE

SHORTS LINE

SHORTS LINE

SHORTS LINE

SHORTS LINE

X

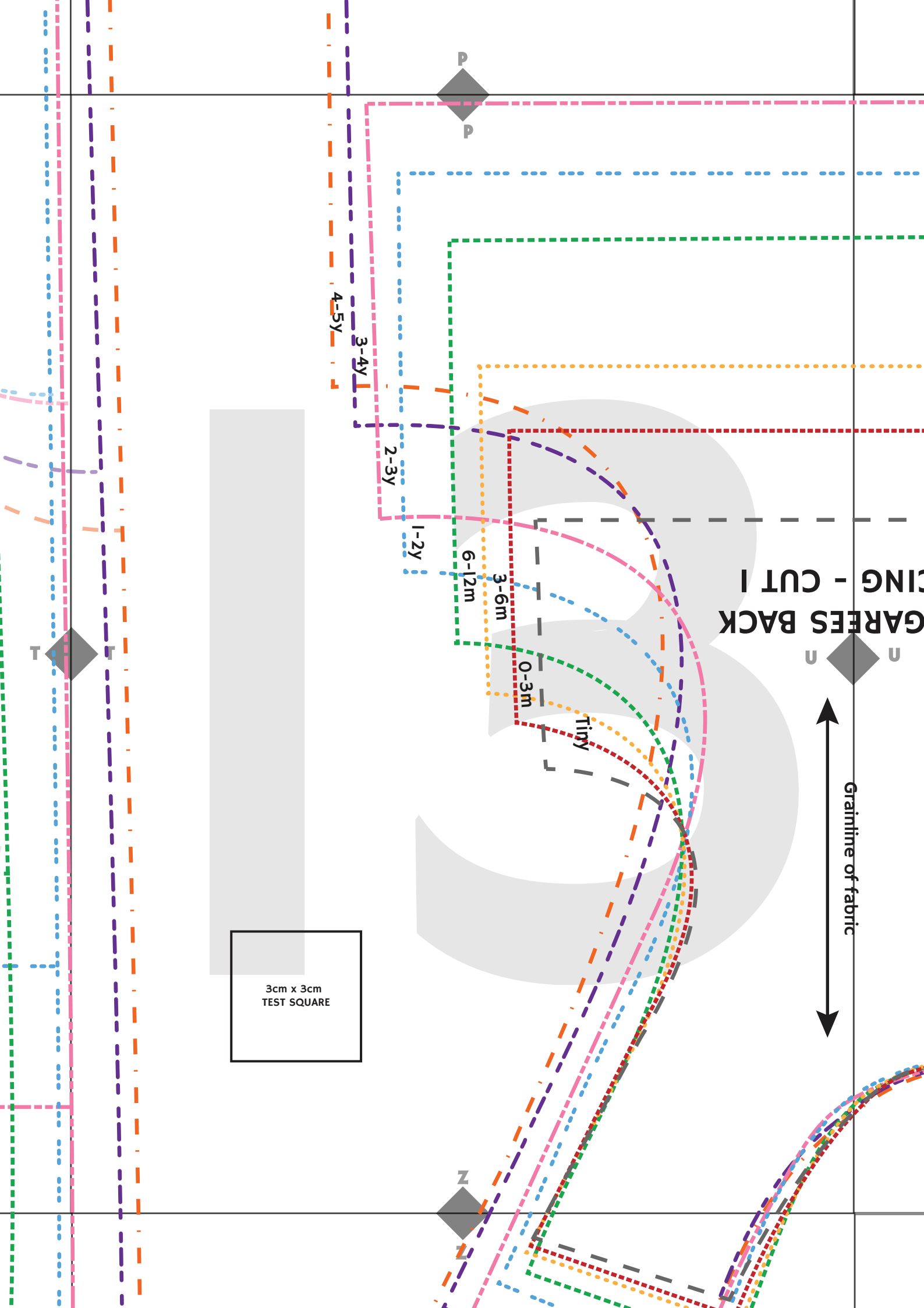
X

S

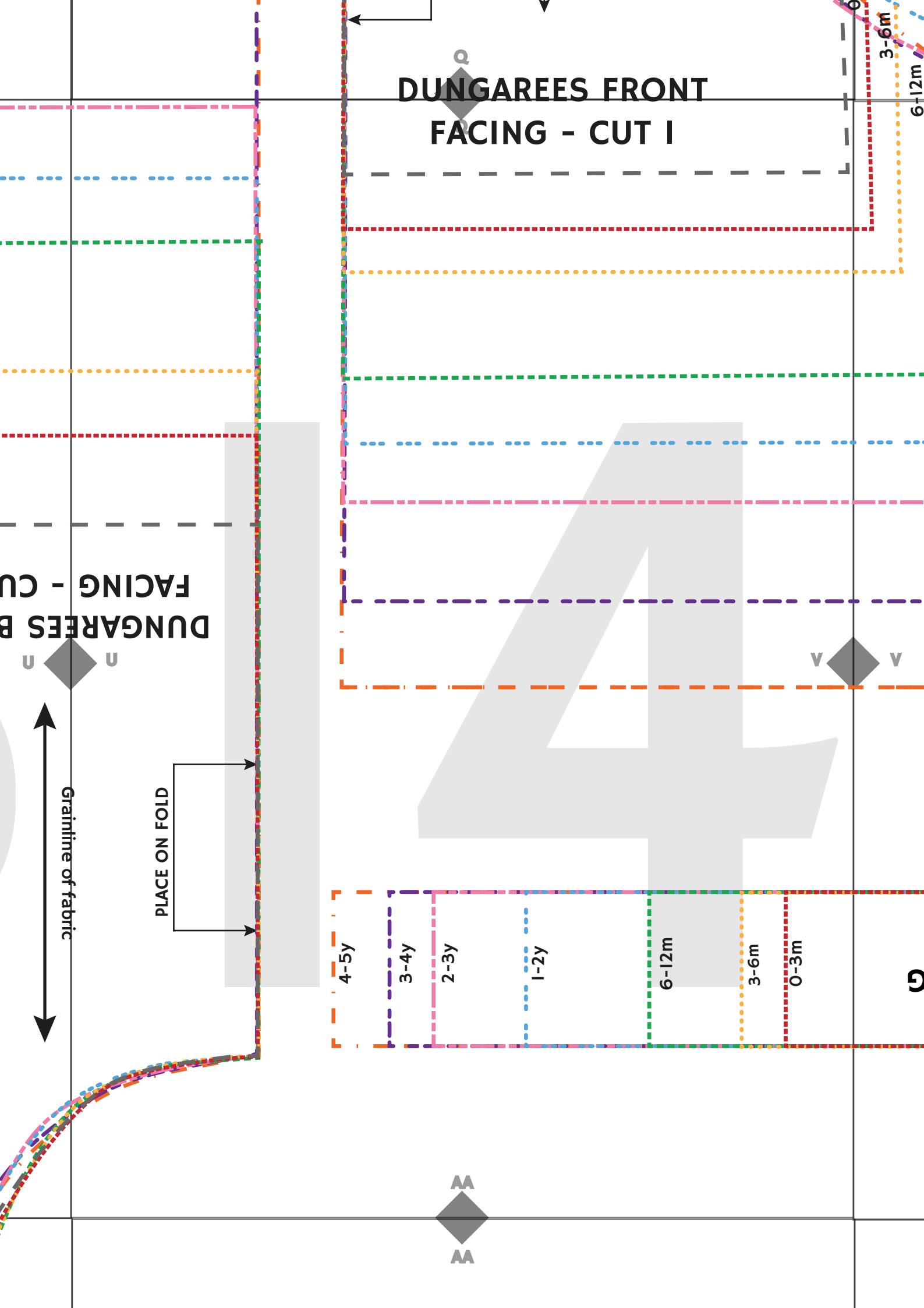
S

T

T



DUNGAREES FRONT FACING - CUT I



DUNGAREES BACK FACING - CUT I

Grainline of fabric

PLACE ON FOLD

4-5y

3-4y

2-3y

1-2y

6-12m

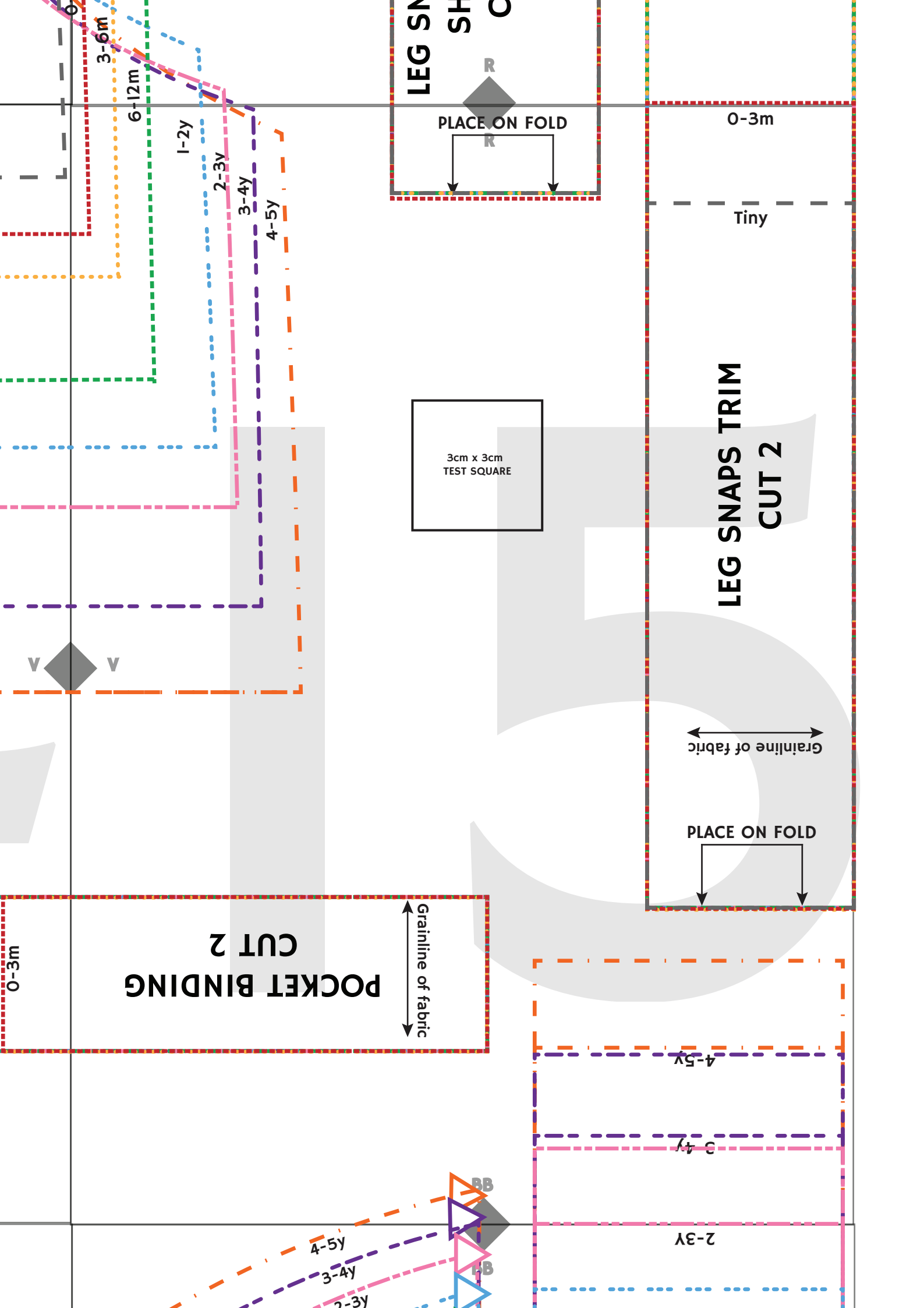
3-6m

0-3m

3-6m

6-12m

5



LEG SNIPS

PLACE ON FOLD

R

0-3m

Tiny

LEG SNAPS TRIM
CUT 2

3cm x 3cm
TEST SQUARE

Grainline of fabric

PLACE ON FOLD

POCKET BINDING
CUT 2

Grainline of fabric

0-3m

4-5y

3-4y

2-3y

4-5y

3-4y

2-3y

BB

BB

V

3-6m

6-12m

1-2y

2-3y

3-4y

4-5y

W

W

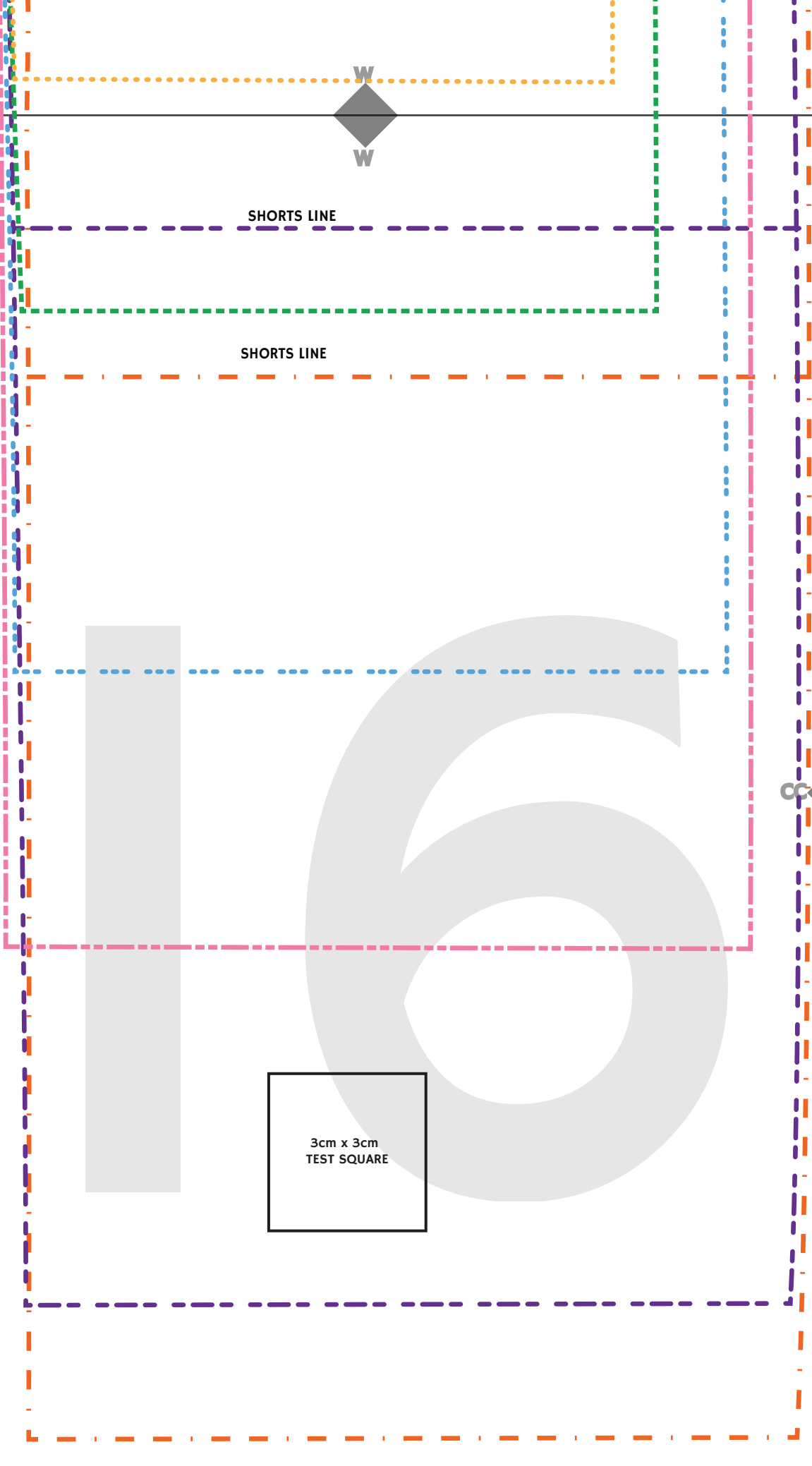
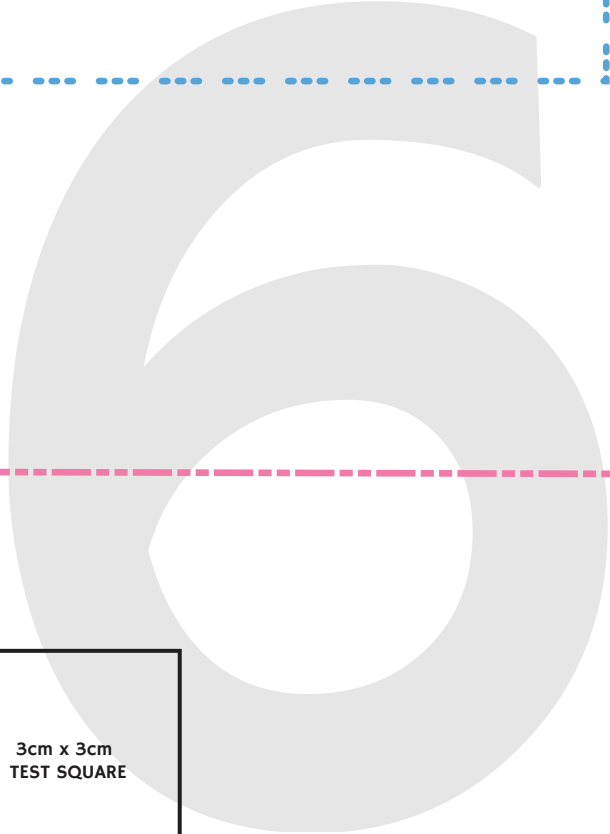
SHORTS LINE

SHORTS LINE

CC

CC

3cm x 3cm
TEST SQUARE



X

X

SHORTS LINE

SHORTS LINE

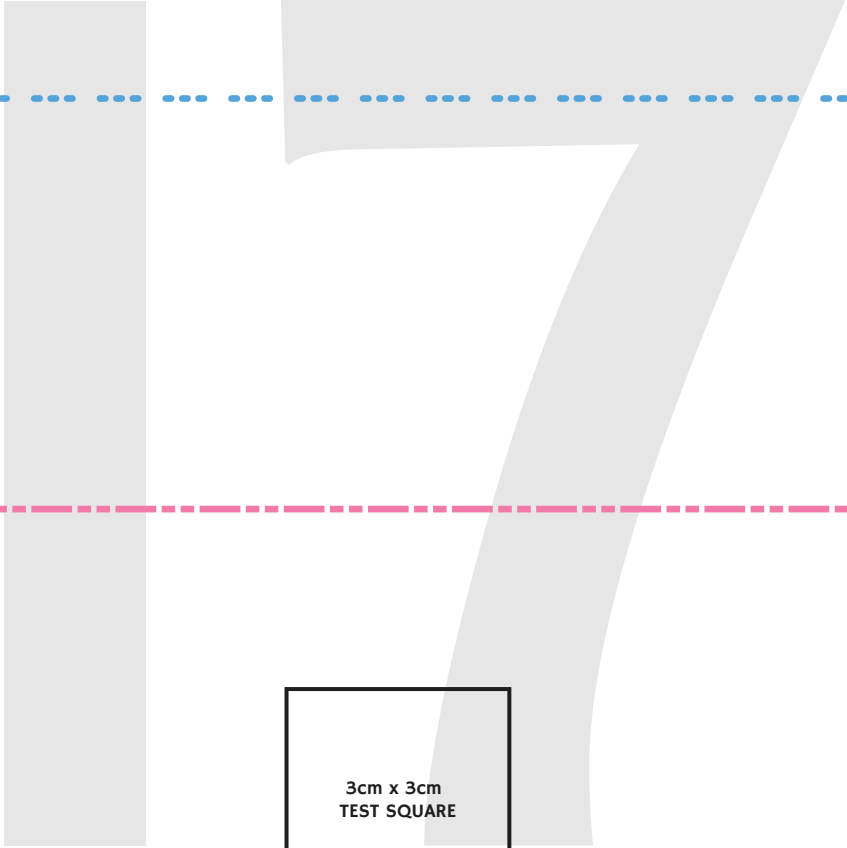
CC

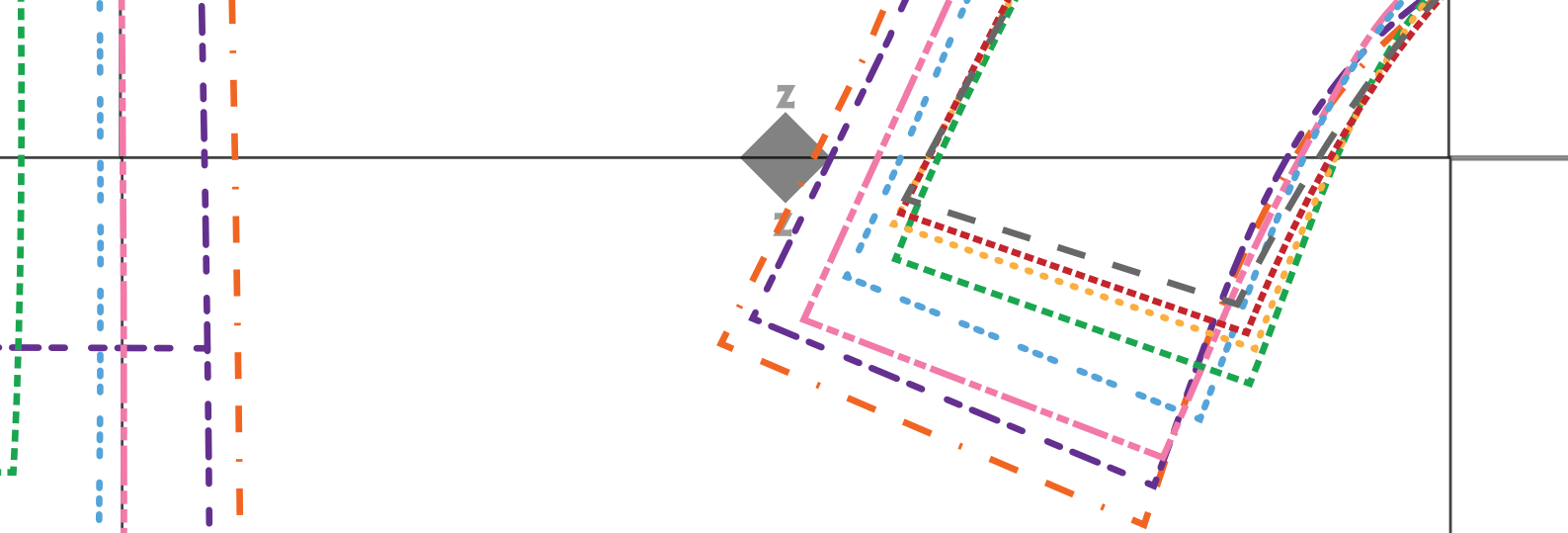
CC

DD

DD

3cm x 3cm
TEST SQUARE





ANKLE CUFF CUT 2

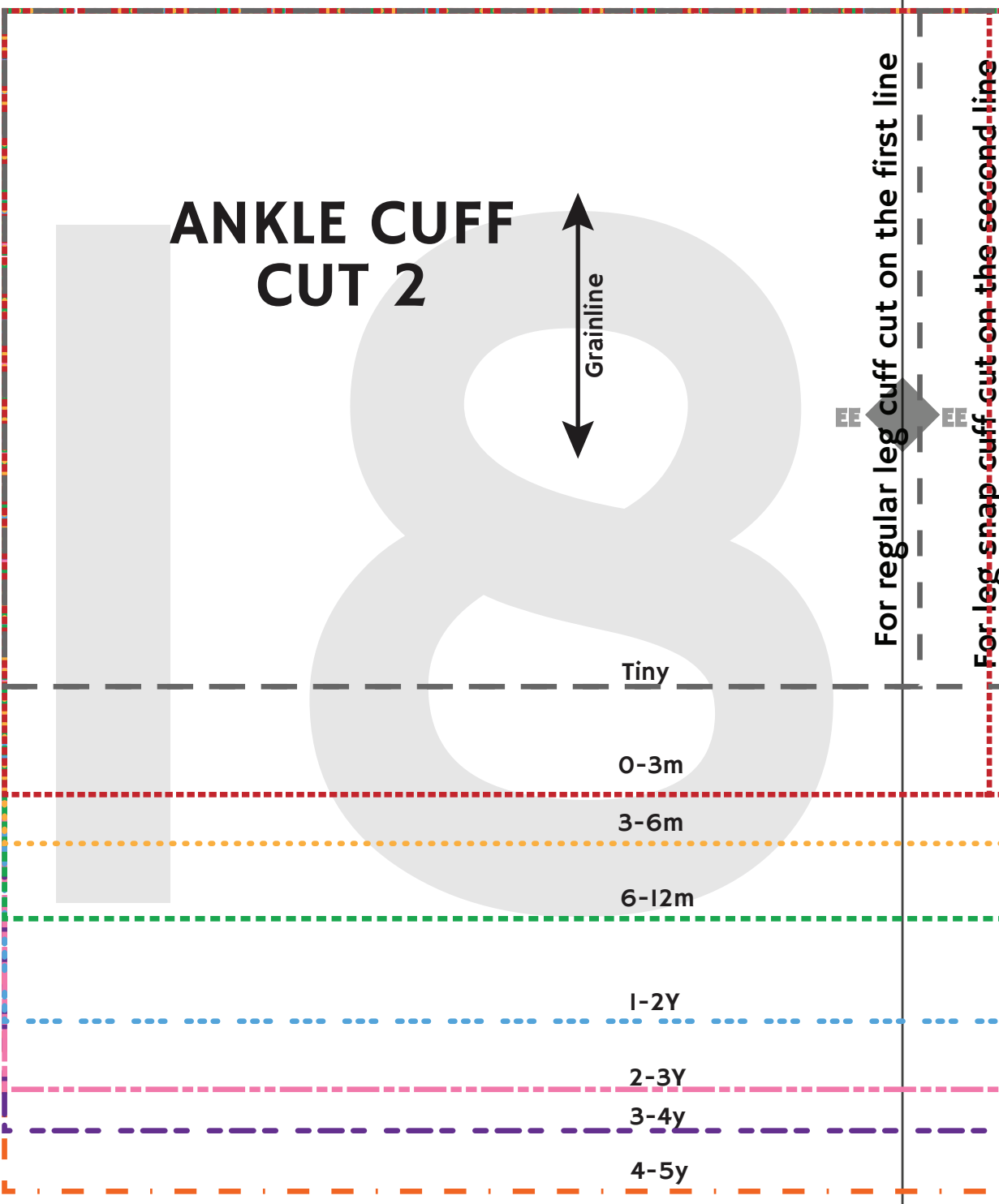
Grainline

DD

EE

For regular leg cuff cut on the first line

For leg snap cuff cut on the second line



Tiny

0-3m

3-6m

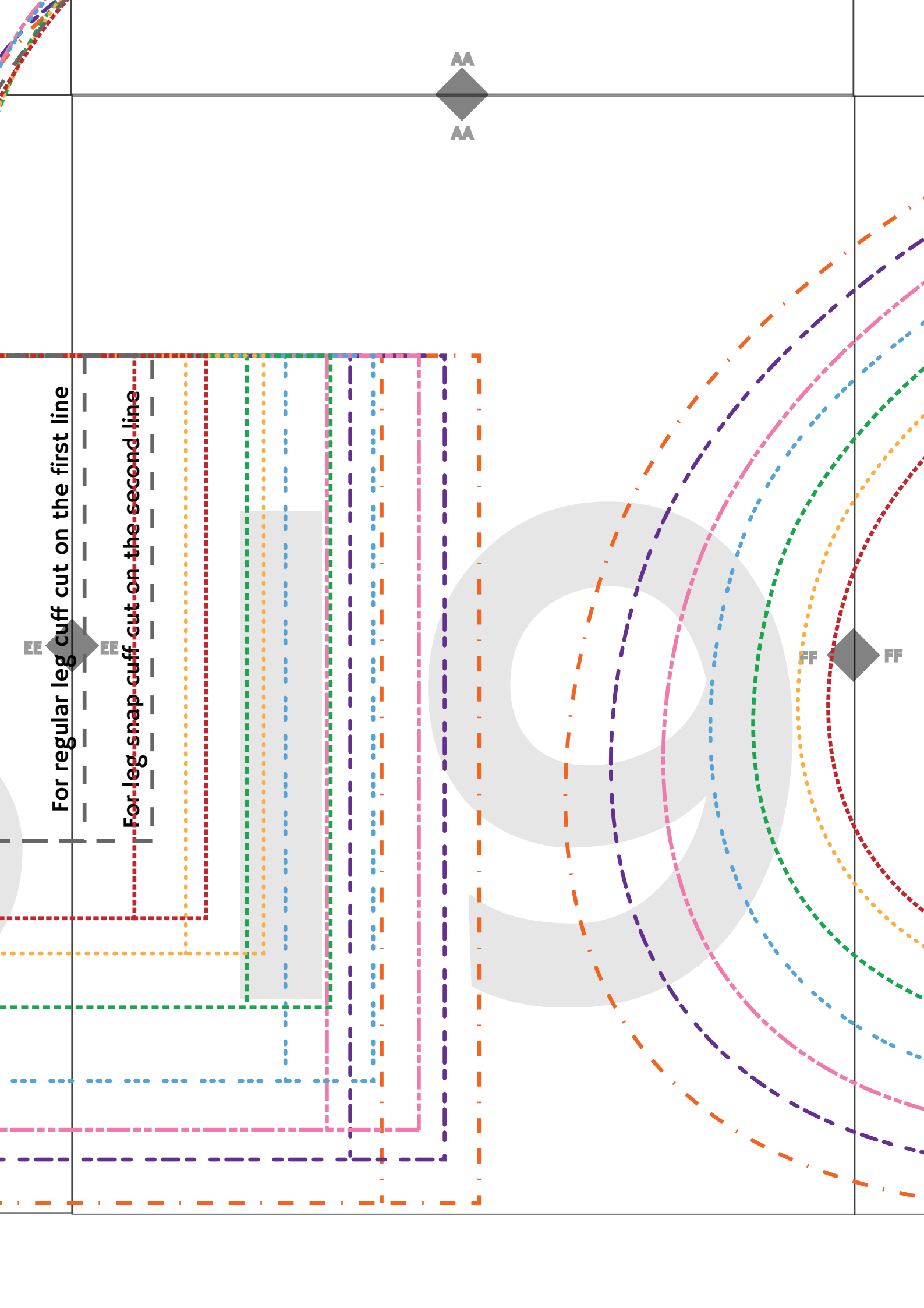
6-12m

1-2Y

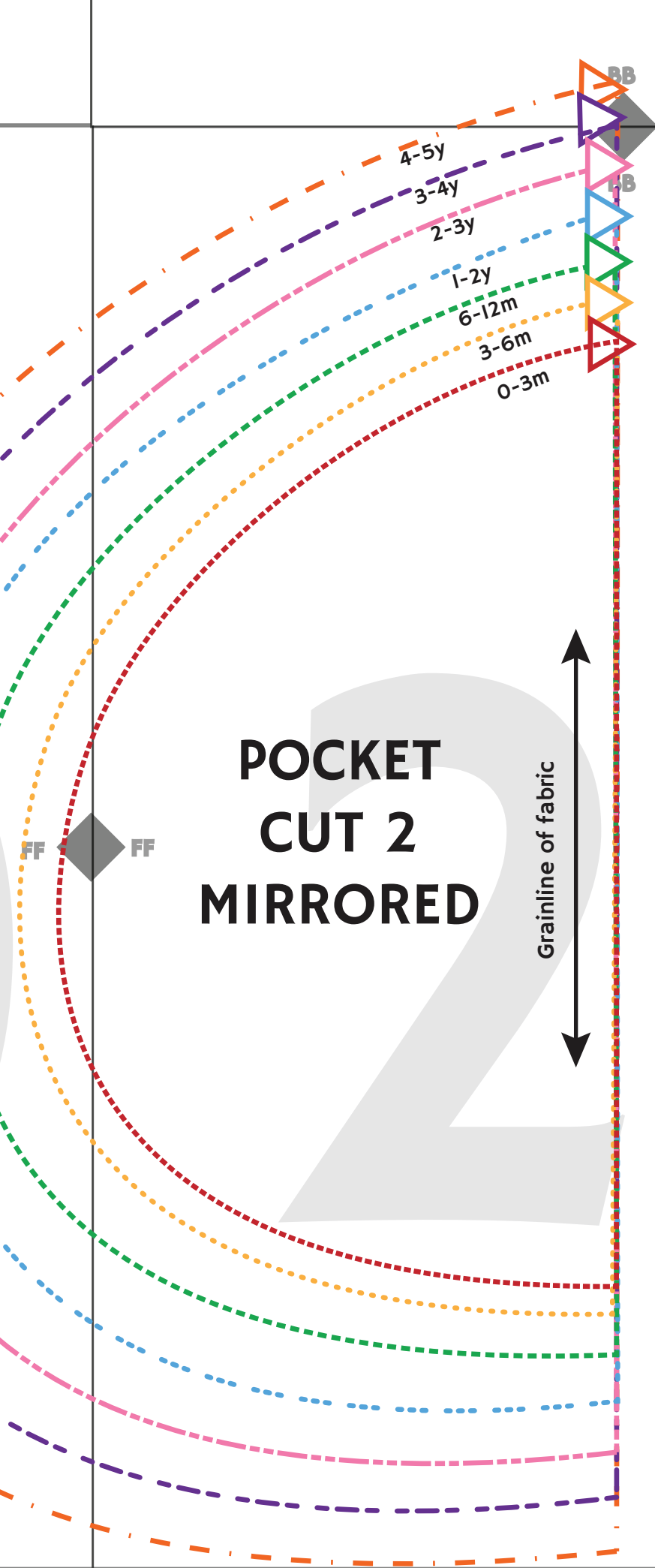
2-3Y

3-4y

4-5y



POCKET CUT 2 MIRRORED



SHORTS CUFF CUT 2

